



University of
South Australia

Cancer Research
Institute

INAUGURAL REPORT
2018

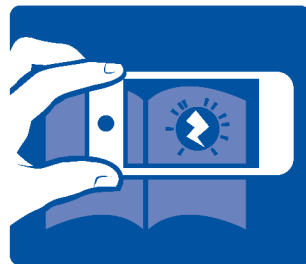


The UniSA Cancer Research Institute embraces technological innovation. This Inaugural Report has been designed with an interactive digital layer. **Scan the report using the free Zappar App for an enriched experience.**



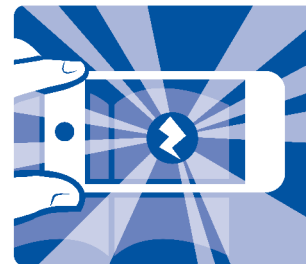
Ready

Download Zappar for free from your app store



Aim

Scan the zapcode then aim at the whole image



Zap

Watch it come to life!

NO SMARTPHONE OR TABLET?

You can also find this content at:
www.unisa.edu.au/research/cri/



ACKNOWLEDGEMENT OF COUNTRY

UniSA respects the Kaurna, Boandik and Barngarla peoples' spiritual relationships with their country. We also acknowledge the diversity of Aboriginal peoples, past and present.

Find out more about the university's commitment to reconciliation at unisa.edu.au/RAP

UniSA Cancer Research Institute WELCOME



Professor Ian Olver AM

Inaugural Director UniSA Cancer Research Institute and Professor of Translational Cancer Research

Lead cancer research with foresight, to benefit society



UniSA Cancer Research Institute GOVERNANCE



The UniSA Cancer Research Institute Board guides and provides advice on strategic matters, the Board membership consists of representatives from across UniSA.



Professor Tanya Monro

Deputy Vice Chancellor: Research and Innovation and
Chair: UniSA Cancer Research Institute Board



External Advisory Group

The UniSA Cancer Research Institute External Advisory Group provides expert advice and guidance on the Institute's strategic direction and future strategic opportunities for partnership and impact.

UniSA Cancer Research Institute CENTRES



Research within the UniSA Cancer Research Institute encompasses –



CENTRE FOR CANCER DIAGNOSTICS AND THERAPEUTICS

Research is focused on discovering and developing new drugs, novel treatments and methods of detection, as well as diagnoses for better patient outcomes

Director: Professor Alan Boddy



AUSTRALIAN CENTRE FOR PRECISION HEALTH

Population health research to improve the future of health

Director: Professor Elina Hyppönen



CENTRE FOR TRANSLATIONAL CANCER RESEARCH

Our research is aimed at reducing disparities in outcomes, improving the quality of cancer care and cancer treatments, as well as promoting recovery and supportive care for survivors and their families

Director: Professor Eva Bezak



AFFILIATES

Our researchers work closely with research
Affiliates from other Institutes and Centres in UniSA

Introducing our **RESEARCH**



Professor Eva Bezak
Leader: Medical Radiations



Professor Clive Prestidge
Leader: Nanostructure and Drug Delivery



Professor Elina Hyppönen
Leader: Australian Centre for
Precision Health



Professor John Hayball
Leader: Experimental Therapeutics



Introducing our **RESEARCH**



Professor David Roder
Leader: Cancer Epidemiology and
Population Health



Professor Sanjay Garg
Leader: Pharmaceutical Innovation
and Development

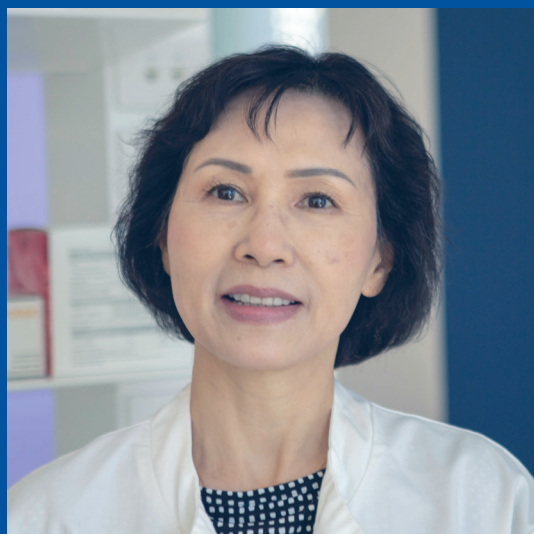


Professor Cory Xian
Leader: Bone Growth and Repair



Professor Marion Eckert
Leader: Cancer Care

Introducing our **RESEARCH**



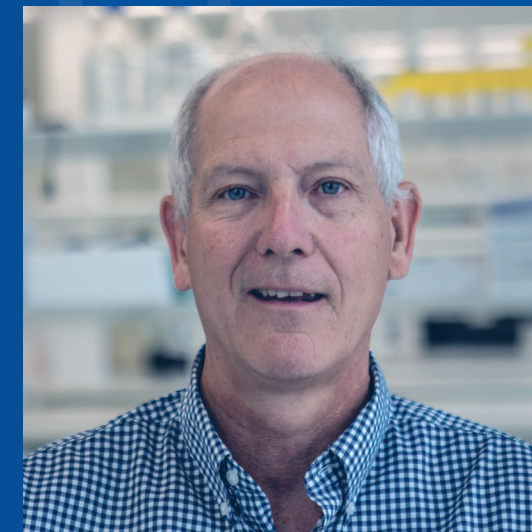
Professor Shudong Wang
Leader: Drug Discovery and
Development



Professor Bill Runciman
Leader: Patient Safety



Associate Professor Hong Lee
Leader: Statistical genetics



Professor Doug Brooks
Leader: Mechanisms in Cell Biology
and Diseases

Introducing our RESEARCH



Professor Peter Hoffmann
Leader: Biomaterials Engineering
and Nanomedicine

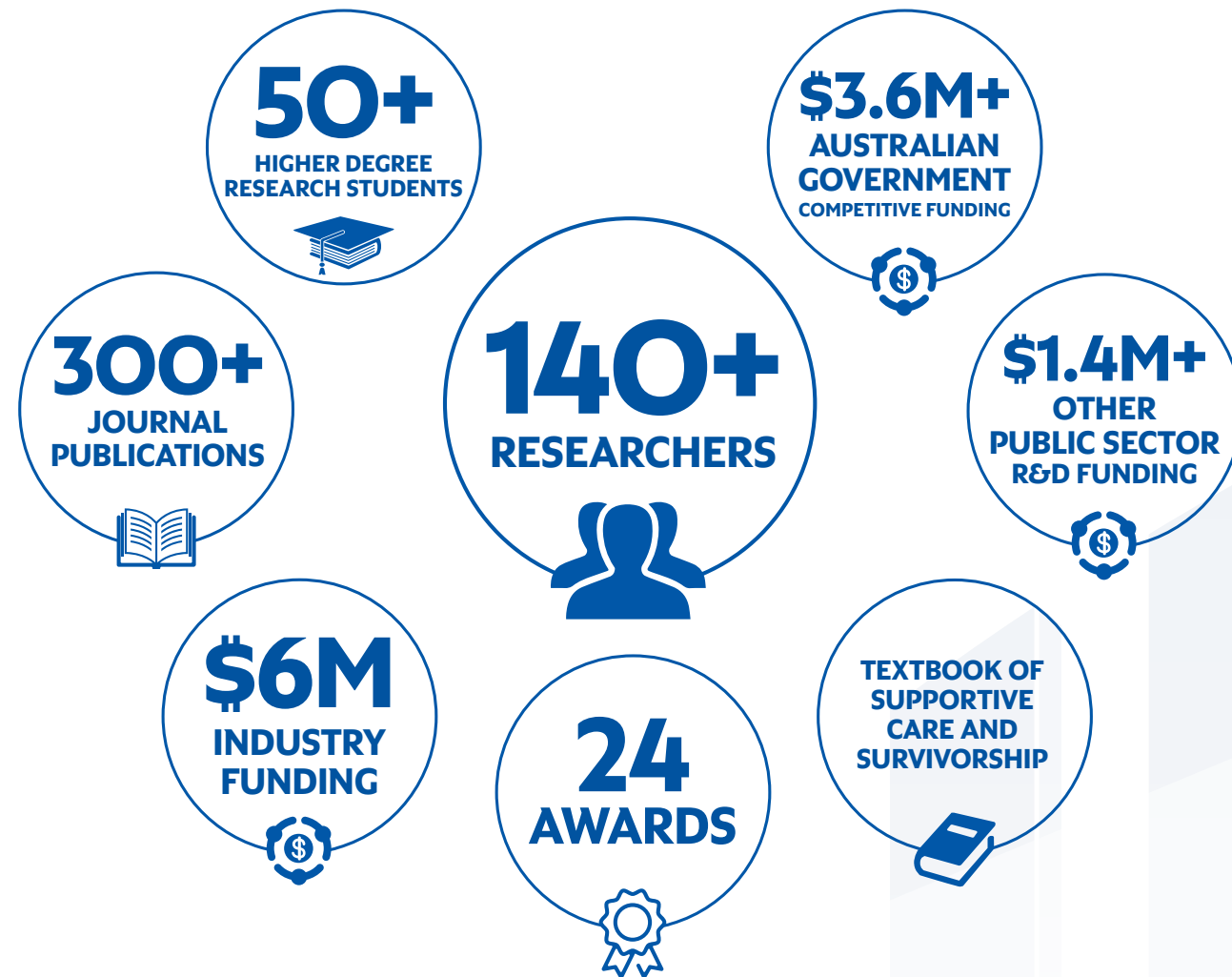


**Professor Ian Olver AM
and Dr Kate Gunn**
Psychosocial oncology

Research IMPACT



UniSA Cancer Research Institute AT A GLANCE



UniSA Cancer Research Institute STRATEGIC PLAN





University of
South Australia

Cancer Research
Institute

Help us make cancer breakthroughs

DONATE NOW

donate.unisa.edu.au/donate-to-cancer-research



unisa.edu.au/research/cri



twitter.com/UniSACRI



facebook.com/unisacancerresearchinstitute/

