

# 2020 STUDY AND CAREER GUIDE



University of  
South Australia



# Start your unsta



*"UniSA is a globally connected and engaged university helping to solve the problems of industry and the professions. Our graduates are the new professionals, at ease with the world and ready to create and respond to change. We are Australia's University of Enterprise."*

Prof. David Lloyd | **VICE CHANCELLOR AND PRESIDENT**

Get ready for your future career. Choose from over  
200+ world-class degrees. Learn from experts in  
their field. Be prepared to take on challenges. Take  
risks. Move up-ways and side-ways. Be dynamic not  
static. Step into the arena. Embrace technology.

# oppable career.

Break stuff. Travel. Volunteer. Be nimble. Go beyond  
the classroom. Connect with industry. Push your  
thinking. Tackle real-world problems. Innovate and  
disrupt. Show up. Stay hungry. Go global. Be limitless.

*Join Australia's University of Enterprise.*

**SA's #1  
UNIVERSITY FOR  
GRADUATE CAREERS**

QILT: Graduate Outcomes Survey  
2016–18 – Full-time Employment  
Indicator (Undergraduate). Public  
SA-founded universities only.

**TOP 3 YOUNG  
UNIVERSITY IN  
AUSTRALIA**

Ranked #3, 2018 THE Young  
University Rankings.

**RANKED 25th IN  
THE WORLD'S TOP  
50 UNDER 50**

2019 QS Top 50 Universities  
Aged Under 50.

---

# GET THE CAREER YOU WANT

---

## **World-class degrees**

UniSA offers over 200 world-class degrees across a wide range of discipline areas. We are also the only university in SA to offer undergraduate degrees in Aviation, Construction Management, Counselling and Interpersonal Skills, Creative Industries, Education (Honours), Interior Architecture, Journalism, Pharmacy, Physiotherapy, Occupational Therapy, Property, Product Design and more, along with the only fully accredited degree in Exercise and Sport Science.

## **Top ranking teachers**

Make your study experience relevant and learn from highly qualified academics and industry professionals. In fact, UniSA is Australia's best young university for teaching quality (2018 *THE* Young University Rankings).

## **Practical learning**

Learn in a highly practical environment. Complete real-world projects along with internship and placement opportunities. Learn directly from experts who are leaders in their field and develop the skills required of tomorrow's professionals.

## **Industry connected**

We collaborate with over 2,500 companies worldwide to bring our students placement, project, research and work opportunities. Connect with industry during your studies and benefit from curriculum informed by the latest trends and practices.

---

## **GLOBAL OPPORTUNITIES**

Broaden your thinking and see the world through a range of global opportunities. Travel overseas through a student exchange, short-term program, internship, volunteering opportunity or study tour. Graduate with international experience and the skills to take on new challenges.

[unisa.edu.au/globalopportunities](https://unisa.edu.au/globalopportunities)

## **CAREER SERVICES**

Our Career Services team will help you get career ready. Access our online Career Hub for exclusive job listings, tips on resume writing and to practise your interview skills through simulation software. You can also connect with a career adviser, attend industry events, and walk in to one of our drop-in centres on campus.

[unisa.edu.au/careers](https://unisa.edu.au/careers)



**No.1  
IN SA**  
for employer  
satisfaction

*QILT: 2018 Employer Satisfaction  
Survey, Overall Satisfaction  
Indicator – National Report*

200+  
WORLD-CLASS  
DEGREES

COLLABORATING  
WITH OVER 2500  
COMPANIES  
WORLDWIDE

87 STUDY  
EXCHANGE  
PARTNERS IN  
MORE THAN 24  
COUNTRIES

## Finding the right fit



Ben Germein is one of the co-founders and masterminds behind the global business, HAPPY WAY.

He combined his passion for fitness with a degree in marketing to launch a range of 100% natural protein powders for women, a game-changing move in one of the fastest-growing industries.

Unsure what he wanted to do, Ben worked a few odd jobs before deciding to go to university. To keep his pulse on the health and fitness industry, Ben worked at a gym while he studied and then went on to open and manage gyms across Adelaide. It was this experience and the people he met along the way that ultimately inspired him to start his own business.

However, like any true entrepreneur, Ben got restless and wanted to find the next challenge. That's when HAPPY WAY came into the picture. Ben went from working in his basement to distributing products to 64 countries around the world. And now the universe is the limit!

Ben Germein  
**BACHELOR OF BUSINESS  
(MARKETING), CO-FOUNDER  
OF HAPPY WAY**

Winner 2018 Telstra South  
Australian Business Award.

*"I love the autonomy and the ability to be creative with no limits to what I want to do and how far I want to take things. There is a lot of freedom that comes with running your own business but it also takes a lot of structure and dedication."*

*"I've looked for mentors throughout my career. It's really important for entrepreneurs to connect with people, be inquisitive and ask lots of questions."*



"Careers are not linear, they bounce around depending on where the opportunities lie, so say yes even if they're outside your field. Have an openness to learning new things, learn to adapt and be resilient to change. We look for individuals who can build rapport quickly, have strong relationship skills, and adopt a growth mindset."

**Susan Frangakis / Head of HR Business Partners / Bendigo and Adelaide Bank**

Careers that interest me...

.....

.....

.....

.....

.....

.....

.....

.....

.....

.....

# I want a career in.....

## Designing spaces and building things

Civil Engineering	
Construction Management	
Surveying	
Architecture	
Interior Architecture	

## Exploring the curious and solving problems

Science	
Environmental Science	
Mechanical Engineering	
Aviation	
Mathematics	
Medical Science and Laboratory Medicine	

## Creating better systems and user experiences

Information Technology	
Software Development	
Networking and Cybersecurity	
Electrical Engineering	

## Empowering future generations

Early Childhood Education	
Primary Education	
Secondary Education	

## Helping people

Psychology	
Social Work	
Public Health	
Human Services	
Ageing and Disability	

## Creative thinking and expression

Arts	
Creative Industries	
Communications and Media	
Contemporary Art	
Design and Marketing	
Product Design	
Communication Design	
Journalism and Professional Writing	


### Building a business mindset

Business and Management	
Innovation and Entrepreneurship	
Law	
Marketing	
International Business	
Enterprise Business Solutions	
Human Resource Management	
Property and Real Estate Practice	
Tourism and Event Management	
Accounting and Finance	

### Developing games and digital media

Information Technology	
Games and Entertainment Design	
Media Arts	
Illustration and Animation	
Game Art	
Games Design and Production	
Mobile App Development	

### Working in sport and fitness

Human Movement	
Exercise and Sport Science	
Sport and Recreation Management	

### Supporting health and wellbeing

Nursing and Midwifery	
Occupational Therapy	
Pharmacy	
Nutrition and Food Sciences	
Clinical Exercise Physiology	
Podiatry	
Medical Radiation Science	
Physiotherapy	

## Bright lights, big city



Dove's Self-Esteem campaign changed the world's perception of beauty. The campaign's fame was largely thanks to the Dove Evolution video that was the brainchild of award-winning creative director and UniSA graduate, Tim Piper. This visionary force now co-runs the creative agency and production company Piro in New York City, working on Hollywood blockbusters to grassroots projects, viral advertisements and even a four-part series for Hulu. Tim and his team are disrupting the industry, taking creativity to a new level and pioneering a new wave of thinking.

Tim Piper

**BACHELOR OF DESIGN, VISUAL  
COMMUNICATION / FOUNDER  
PARTNER, PIRO**

*Named in the World Top 50 Creative Thinkers by Creativity Magazine and made Time Magazine's Top 200 Most Influential People in the World.*



Explore your study and career options at [unisa.edu.au/study](https://unisa.edu.au/study)

---

# YOUR STUDY EXPERIENCE

---

## YOUR STUDY OPTIONS

Find the degree that's right for you. What are you most interested in? What career do you want? It's important to narrow down your choices and preference the degrees that are a good fit for you.

### Checklist

---

Does this degree match my career goal?

---

---

Do I like the courses in this degree?

---

---

Why does this degree interest me?

---

---

What will my study schedule look like?

---

---

Will I meet the entry requirements?

---

*To explore our 200+ world-class degrees, visit [unisa.edu.au/study](https://unisa.edu.au/study)*

## DOUBLE DEGREES

Graduate with a competitive advantage by combining two fields of study. Popular combinations include Law and Journalism, Psychological Science and Human Resource Management, Exercise and Sport Science with Nutrition, and Human Movement with Education.

## FLEXIBLE AND ONLINE STUDY

Take advantage of our flexible study options, including online, part-time, blended and accelerated learning. Tailor your degree so you have time to travel, work and study from any location. We also offer 100% online degrees through UniSA Online. Study on Demand through an online interactive learning environment anywhere, any time and on any device. For more information see pages 30–31.

## STUDENT APP

Our free mobile app allows all UniSA students to view their timetable, check emails, get important notifications, track assessments and see course enrolments and details. You can also find available PCs on campus, book a study room, check your print quota and library loans, and view announcements.

[unisa.edu.au/studentapp](https://unisa.edu.au/studentapp)

## GET CAREER READY

We are focused on preparing our graduates to be tomorrow's professionals – that's why we have SA's best graduate career outcomes. You will learn from highly-experienced academics and professionals who are leaders in their field. You will also connect with industry, work on real issues and gain practical experience through:



*Real-world projects, internships and placements.*



*National and international study tours, exchange programs, competitions and exhibitions.*



*Industry masterclasses, clinics and networking opportunities.*



*Volunteering and community projects.*

## UniSA+

Stand out as an exceptional graduate by participating in UniSA+, a unique co-curricular program open to all UniSA students. Starting in first year, you will develop the practical skills needed for the modern workplace including leadership, entrepreneurship, cultural understanding and self-development. On completion, you will receive a signed certificate from the Vice Chancellor and a record of your achievements.

[unisa.edu.au/unisaplus](https://unisa.edu.au/unisaplus)

## UniSA LEADERSHIP PROGRAM

Graduate with the qualities needed to thrive in our globally competitive environment. The UniSA Leadership Program offers workshops throughout the year, designed to offer insights into different leadership styles and to develop students' leadership skills in core areas such as emotional intelligence, conflict resolution, effective communication, personal branding, goal setting and more.

[unisa.edu.au/leadership](https://unisa.edu.au/leadership)



Access next-generation learning spaces on campus.

## Actions

- Explore your study options at [unisa.edu.au/study](http://unisa.edu.au/study)
- Explore your career outlook at [joboutlook.gov.au](http://joboutlook.gov.au)

### MY PREFERENCE LIST

.....

.....

.....

.....

### MY BACK-UP PREFERENCES

(see alternative pathways on pages 26–29)

.....

.....

.....

.....

## INTERNSHIPS AND PLACEMENTS

“UniSA has given me the opportunity to learn from industry-experienced staff and complete a placement at the Adelaide Football Club. I have used software vision and statistics to present coaches with insight into player performance. I now have experience in Match-Day Analysis, GPS monitoring, Strength Programming and Data Collection at the various levels of AFL, SANFL and AFLW.”



Jordan Sellar / Bachelor of Human Movement



“My studies prepared me for my role at Rising Sun Pictures, not just by teaching me practical and artistic skills, but more importantly, how to apply these in a professional environment.”



The most exciting part of my time in visual effects so far is definitely seeing the first shot I've ever worked on in a trailer at the cinema.”

Francesca Milde / Graduate Certificate in Compositing and Tracking



**RIISING SUN** PICTURES

“During my degree I have been working at DXC Technology through a paid internship, putting the skills I have learnt to use in a production and corporate environment. I have also visited DXC Datacentres in India to understand the organisation's processes and infrastructure. In the future, I would like to work in cybersecurity, as I am genuinely interested in how it affects various countries and industries.”



Nikil Kathiravan / Bachelor of IT (Honours) (Enterprise Business Solutions)





# No.1 IN SA

## for student satisfaction

*QILT: Course Experience Questionnaire  
2016–18 – Overall Satisfaction Indicator  
(Undergraduate). Public SA-founded  
universities only.*



# #1 YOUNG UNIVERSITY IN AUSTRALIA

## for teaching quality

*2018 THE Young University Rankings*

## STUDY ABROAD

Get global experience by traveling overseas during your studies. We offer a range of international opportunities including student exchange, study tours, internships, volunteering programs, and more. There are programs available in countries such as Canada, France, Germany, the Netherlands, Hong Kong, Japan, South Korea, Mexico, the United Kingdom and the United States.

[unisa.edu.au/globalopportunities](https://unisa.edu.au/globalopportunities)



*UniSA students on a volunteering placement at the Pyeong Chang Winter Olympics, learning about tourism and marketing.*



## VOLUNTEER YOUR TIME

Are you passionate about a particular cause? We can help you connect with an organisation and become a volunteer during your time at university. It's a great way to give back to the community, gain valuable life experience and add extra value to your resume.

[unisa.edu.au/volunteering](https://unisa.edu.au/volunteering)



## APPLY FOR A TRAVEL SCHOLARSHIP

Study in the Indo-Pacific region through the Australian Government's New Colombo Plan (NCP) Scholarship Program. There are over 40 host locations including Nepal, Maldives, Singapore, Tonga, Vietnam, Malaysia, and more. The scholarship includes 1–2 semesters of study, language training plus an internship or mentorship for up to six months, with a value of up to A\$87,500. You can also get credit towards your degree!

[unisa.edu.au/ncp](https://unisa.edu.au/ncp)



**"I heard about the NCP in first year when I wasn't sure about my degree, career or life direction. I took a chance, and was selected as the first NCP Scholar in South Korea and it absolutely changed my life."**

*Michelle Howie, Bachelor of Engineering (Honours)*

**"It's a big positive that students get exposed to working in the field and with industry throughout their degree. Our approach is to provide students with as many opportunities as possible to learn in a hands-on way. Connecting what we teach to real-world issues is really important – we want our graduates to be confident problem-solvers who are fully prepared for their professional careers."**

*Associate Professor Tom Raimondo*

*Program Director: Environmental Science*

*Named in the Top 5 Researchers Under 40 by ABC Radio National and UNSW, and recipient of a 2016 Young Tall Poppy Science Award.*



## Feeding the future

Wawira Njiru wanted to make a positive impact in her community back in Kenya. By the time she graduated from her nutrition and food sciences degree, not only did she have a clear vision; big things were already in motion.

During her studies, Wawira hosted a community fundraiser and then used \$1,680 to build a make-shift kitchen in Ruiru, near Nairobi.

From here, Food 4 Education was born. Wawira started providing 25 healthy meals a day to primary school children in Kenya. Eight years on, Wawira's organisation is providing 10,000 meals a day, sourcing produce from local farmers.

"When I came to UniSA, I had a clear goal in mind: to do something to benefit my community in the long term, she says.

"The kids inspire me the most. They work hard to be able to get the things that come so easily for others. I am so privileged to have the opportunity to contribute to their future."

In Africa, 23 million children go to school hungry every day, so it's Wawira's dream to expand into other areas of the continent and provide millions of meals over the next decade.

Wawira Njiru

**BACHELOR OF NUTRITION AND FOOD SCIENCES / FOUNDER, FOOD 4 EDUCATION**

---

# YOUR CAMPUSES

---

Study in modern, purpose-built facilities across all six UniSA campuses.  
Learn with the latest industry-standard tools and technologies  
that will take you from the classroom into the workplace.



*Jeffrey Smart Building / City West Campus*



*City East Campus / Anatomy Lab*



Take a virtual campus tour at [unisa.edu.au/campus-facilities](https://unisa.edu.au/campus-facilities)

# City

## CITY WEST

City West Campus is located on the western edge of the CBD. The West End is becoming a vibrant cultural hub and is home to exciting new infrastructure projects. This campus features state-of-the-art facilities including the multi-award winning Jeffrey Smart Building and the newly-constructed Pridham Hall – featuring graduation and event spaces, a sports complex and swimming pool.

### What you'll study

Accounting

Art, Architecture & Design

Business

Creative Industries

Finance

Law

Management

Marketing

### On campus

IRESS Trading Room / [Law Clinic](#) / Mock court / [Marketing Clinic](#) / Architecture studios and workshop / [Visual art and design studios](#) / Photography darkroom / [Post office](#) / Food vendors / [Business Student Hub](#) / Jeffrey Smart Building / [Student Lounge](#) / SASA Gallery / [Architecture Museum](#) / Samstag Museum / [Pridham Hall](#) / Pool and gym facilities / [UniSA Health and Medical Clinic](#) / UniSA Cancer Research Institute / [Pharmacy Practice Integrated Learning Suite \(PPILS\)](#) / Museum of Discovery (MOD.)

## CITY EAST

City East Campus boasts impressive educational facilities and is located in the heart of the city near some of the best venues, eateries and shopping. Students studying a degree within the health and medical sciences will be based here and have access to a wide range of purpose-built laboratories and interactive learning spaces, such as the Horizon Hospital and Health Service.

### What you'll study

Construction Management

Exercise & Sport Science

Human Movement & Clinical Exercise Physiology

Laboratory Medicine

Medical & Radiation Sciences

Nursing & Midwifery

Nutrition & Food Sciences

Pharmacy

Physiotherapy & Occupational Therapy

Podiatry

Public Health

### On campus

Replica hospital and community health settings / [Anatomy lab](#) / Histopathology and Haematology lab / [Microbiology lab](#) / Biomechanics lab / [Sensory lab](#) / Exercise Physiology lab / [X-Ray suites](#) / Virtual Environment Radiation Training suite (VERT) / [Built Environment Experiential Learning Suite](#) / Commercial kitchen / [Environmental Chamber](#) / Community health clinics / [Gym](#) / Food vendors and outdoor plaza / [Student Lounge](#)

**ADELAIDE'S  
WEST END**  
RANKED AS ONE OF



INVESTED OVER  
\$400 MILLION IN  
**NEW  
CAMPUS  
FACILITIES**

### Community clinics

UniSA operates a range of clinics that are open to the general public and also provide learning opportunities for students. Services span the areas of health, law, marketing and psychology.

[unisa.edu.au/community-clinics](http://unisa.edu.au/community-clinics)

# Suburban

## MAGILL

Magill Campus is nestled near the foothills in the leafy eastern suburbs. There are lush gardens and open outdoor spaces coupled with industry-standard learning facilities such as television and radio studios, social work studios, research laboratories, a performing arts theatre, and the Samsung SMARTSchool.

### What you'll study

---

Arts

---

Communication & Journalism

---

Education (Early Childhood & Primary)

---

Media Arts

---

Psychology

---

Social Work

---

### On campus

TV studio / [Sound studio](#) / Radio studio / [Journalism newsroom](#) / Editing suites / [Theatre](#) / Language lab / [Social Work Studio](#) / Cognitive and Systems Neuroscience lab / [Sleep and Chronobiology lab](#) / Psychology Clinic / [Samsung SMARTSchool](#) / Allied Health Clinic / [Gym and indoor sports centre](#) / Outdoor sports field / [Swimming pool](#) / Food vendors / [Parklands and lawn areas](#)

## MAWSON LAKES

Mawson Lakes Campus is located near more than 100 high-technology companies that make up Technology Park – an innovation hub in Adelaide's northern suburbs. This campus is home to state-of-the-art learning and research facilities for engineering, information technology, science, design and aviation.

### What you'll study

---

Aviation

---

Education (Early Childhood, Primary & Secondary)

---

Engineering

---

Information Technology

---

Science & Mathematics

---

### On campus

Industry-standard engineering facilities / [Specialist IT facilities](#) / Mac and CISCO networking labs / [Materials and Minerals Science Learning and Research Hub](#) / Future Industries Institute / [Planetarium](#) / Flight and airport simulators / [Aviation hangar \(located near campus\)](#) / Ecological precinct / [Drama centre](#) / Food vendors and outdoor dining areas / [Sports centre and gym](#)



Take a virtual campus tour at [unisa.edu.au/campus-facilities](https://unisa.edu.au/campus-facilities)





Magill Campus / TV Studio



Mawson Lakes Campus / Advanced Design Studio

# Regional

## WHYALLA

This is SA's largest regional university campus. Situated on a 22-hectare site, the Whyalla Campus features purpose-built learning spaces including health laboratories and simulated classrooms for education students. There is also on-site student accommodation.

## MOUNT GAMBIER

The Mount Gambier Campus is home to modern facilities including the impressive \$12.5 million Learning Centre, which has simulated learning environments for nursing and midwifery students, social work studios, a technology-driven gallery space, cutting-edge IT infrastructure, and a range of social and informal study spaces.

### What you'll study

---

Education (Early Childhood & Primary)

---

Midwifery<sup>^</sup>

---

Nursing

---

Social Work

---

UniSA College:

- Foundation Studies
  - Aboriginal Pathway Program
  - Diploma in Health<sup>#</sup>
- 

*<sup>^</sup>Study core courses online and complete intensive clinical workshops on campus. Only available in Mount Gambier.*

*<sup>#</sup>Only available in Mount Gambier.*

# SPACES & PLACES

25m

SWIMMING POOL

15+

SPORT ACTIVATIONS

1800

SEATS

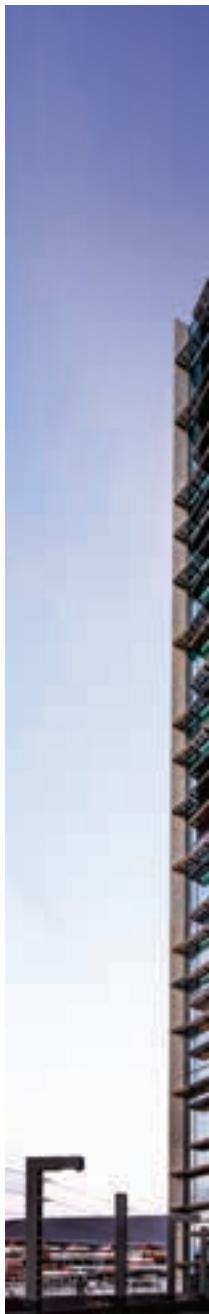
640

SOLAR PANELS

## **Pridham Hall**

*This is our new heart and where you will graduate. It also has open social spaces, sporting facilities and a swimming pool.*

Take a virtual fly-through at [unisa.edu.au/pridham-hall](https://unisa.edu.au/pridham-hall) 





**Horizon Hospital and Health Service**  
 Modelled on real health facilities,  
 students learn in this simulated  
 environment led by real clinicians.



# No.1 IN AUSTRALIA

for research impact  
and engagement

2018 ARC Engagement and Impact Assessment  
 (EI), Combined Impact – Approach to Impact and  
 Engagement on Assessed Fields.



**UniSA Cancer  
 Research Institute**  
 This \$247 million  
 building is home to  
 some of the brightest  
 minds focused on  
 tackling cancer.



**Flight simulator**  
 Aviation students have  
 access to this \$250,000  
 flight simulator replicating  
 the Boeing 737NG aircraft.



**Samsung SMARTSchool**  
 One of Australia's most technologically  
 advanced teacher-training facilities.

### **Welcome to Industry 4.0**

UniSA students in disciplines such as information technology and engineering now have access to the latest software utilised for designing and validating advanced space gear, supercars and warships through a new \$450 million grant from tech giant Siemens. Design with the same software used to develop everything from Space X, the Mars Curiosity Rover, Maserati Ghibli and digital shipbuilding. Graduate with the skills needed for the fourth industrial revolution, or Industry 4.0, by exploring the current trends of improved automation, machine-to-machine communication, machine learning, artificial intelligence and continued digitisation of manufacturing.

# SIEMENS

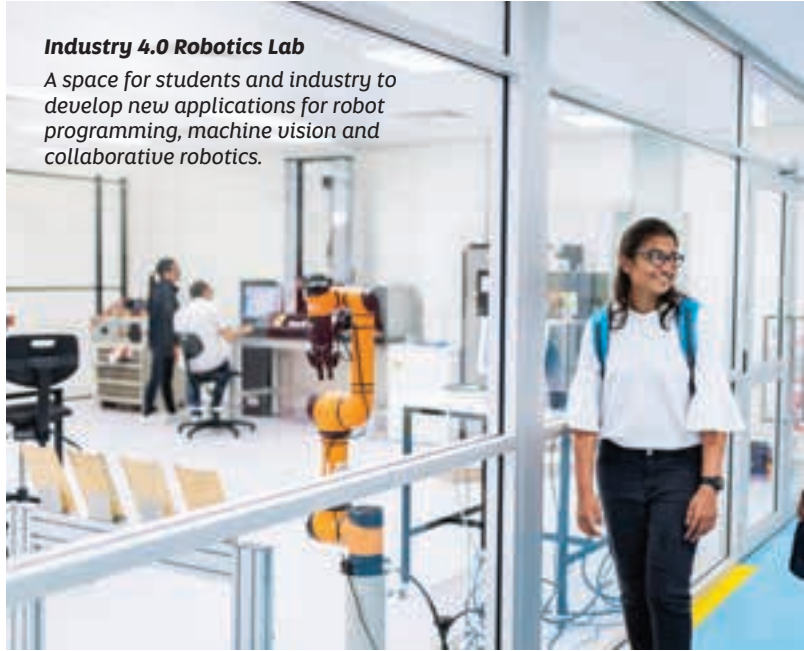
### **Pharmacy Learning Suite**

*In this space, pharmacy students learn how to dispense medicines, counsel patients, and develop clinical service skills.*



### **Industry 4.0 Robotics Lab**

*A space for students and industry to develop new applications for robot programming, machine vision and collaborative robotics.*



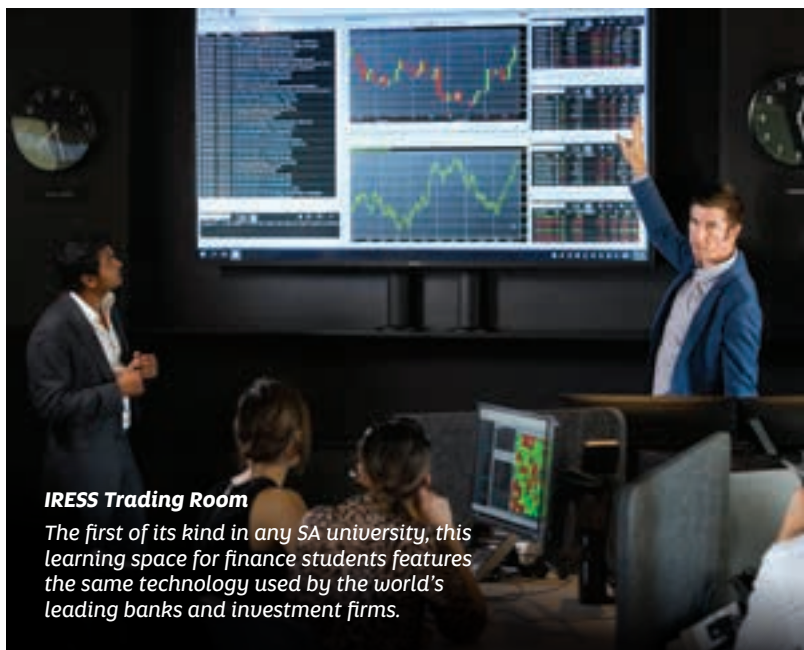
### **MOD.**

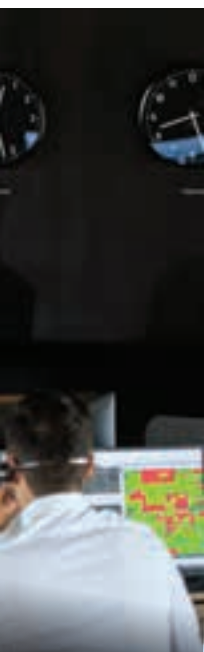
*A futuristic museum of discovery offering dynamic exhibitions to the public.*



### **IRESS Trading Room**

*The first of its kind in any SA university, this learning space for finance students features the same technology used by the world's leading banks and investment firms.*



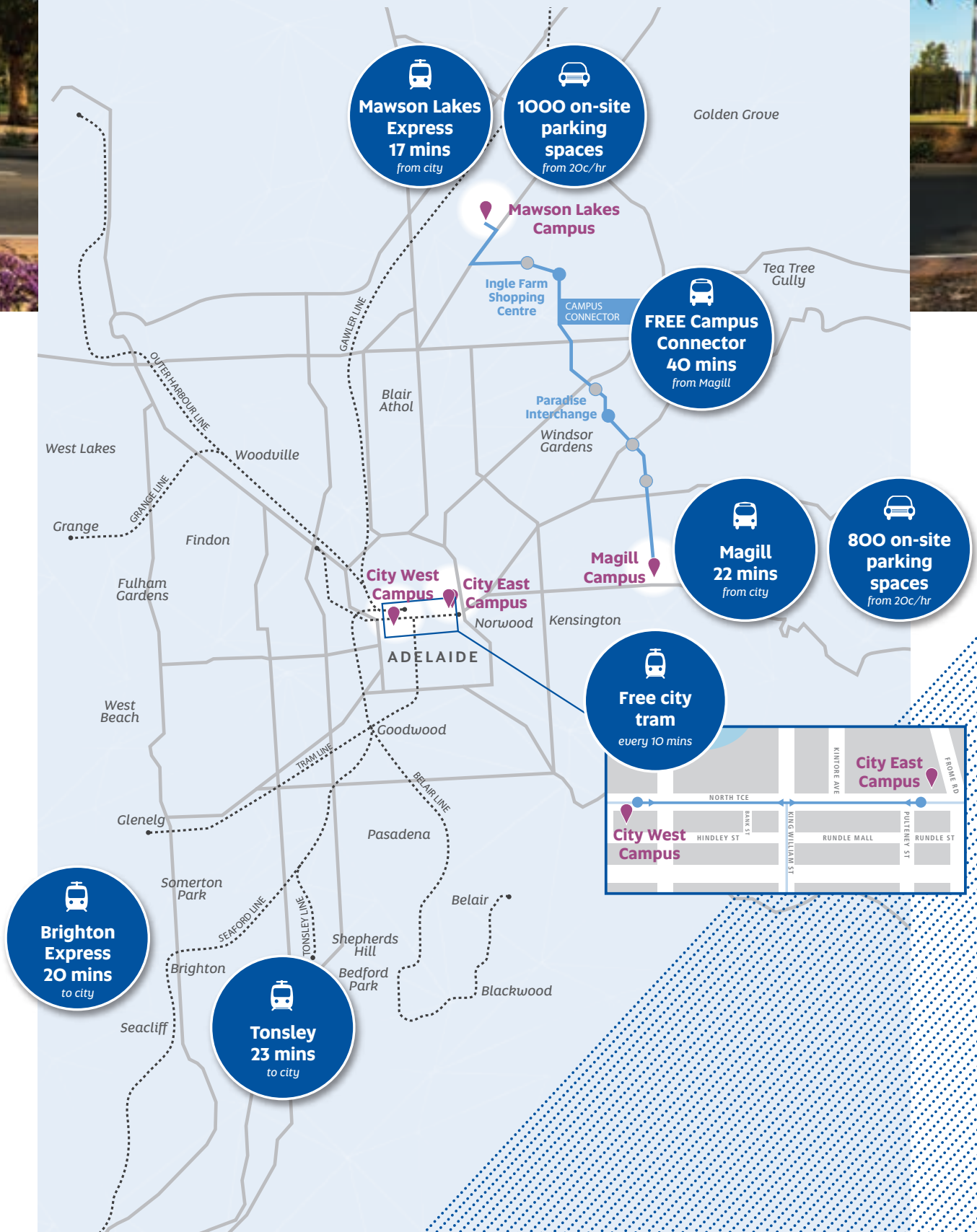


### **Jeffrey Smart Building**

*This multi-award winning building features the best in modern learning facilities and has a 5 Green Star Rating.*



# GETTING TO CAMPUS





Where is my home campus?

What is my best travel option?

## JUMP ON A FREE CITY TRAM

Need to travel between City West and City East campuses? Then jump on the Botanic Gardens or Adelaide Entertainment Centre tram line on North Terrace. The trams are free and run every 10 minutes.

## PUBLIC TRANSPORT

You will find bus stops near each campus and train stations close to the city and Mawson Lakes campuses. Check your bus, train or tram options on the Adelaide Metro website. You will also be entitled to student discounts on tickets once you have enrolled.

[adelaidemetro.com.au](http://adelaidemetro.com.au)

## CAR PARKING

The Magill and Mawson Lakes campuses have on-site car parking available for students. Tickets are purchased through the *UniSA Parki* app available through the App Store or Google Play. Alternatively, you can buy tickets from easily located metered parking machines on campus. Car parking will cost you from \$0.20 an hour to \$1.50 for a full day (8:00am–6:00pm). For city campuses, there is metered on-road and commercial car parking nearby, with costs starting at \$4.00 an hour to \$15.00 a day for early birds.

## CAMPUS CONNECTOR

We run a free bus service between the Magill and Mawson Lakes campuses to make travelling easier for students who need to make the journey or live in surrounding suburbs.

Go online for full timetable and route details.

[unisa.edu.au/campusconnector](http://unisa.edu.au/campusconnector)



## RIDE YOUR BIKE

Cycling is a great way to get to campus. It's fun, inexpensive, good for the environment, and an excellent form of exercise. Each campus has shower facilities and secure bicycle storage areas. You can also hire an *Adelaide Free Bike* from the Security Office at City East and City West campuses to get around during daylight hours.

## ACCESS PARKING

Access parking for people with a disability is available with a parking permit on every campus. Council parking bays are also available.

# STUDENT LIFE

Enjoy an energetic student experience brought to life by events, entertainment, sports, clubs, overseas travel and more. Get involved with life on campus and build lasting friendships along the way.



## ORIENTATION

Kick-off your university adventure by attending Orientation Week. Meet your lecturers, connect with new people and gain valuable insights from current students. Enjoy a free lunch and entertainment, explore your home campus and get ready for your first day at university.

[unisa.edu.au/orientation](https://unisa.edu.au/orientation)



## STUDENT CLUBS

Discover the 100+ academic, cultural and social clubs available at UniSA. From dance, to yoga, climate change, gaming and Harry Potter appreciation – there is something for everyone! It's a great way to meet new friends, find common interests with fellow students and build a more vibrant university experience.

[unisa.edu.au/clubs](https://unisa.edu.au/clubs)



## EVENTS AND ACTIVITIES

All sorts of great events and activities are offered to students throughout the year across all of our campuses. From careers and volunteering events to health, sport and wellbeing activities – there is always something to discover. Students can also explore the public exhibitions and events at The Samstag Museum, Hawke Centre and MOD.



You can join one of our 25+ sporting clubs including rowing, basketball, volleyball, netball, football, gridiron, rock climbing, and more. Gain access to Pridham Hall with a fully-equipped space for training and competitions. You can also sign-up for a range of sports tournaments from social to national level, keep active in our on-campus gyms, and participate in community events.

[unisa.edu.au/unisasport](https://unisa.edu.au/unisasport)



University of South Australia  
Student Association

USASA is your student association. USASA coordinates student advocacy, clubs, second-hand book sales, social events, production of the student magazine, campus counters, and free goodies and giveaways.

[unisa.edu.au/USASA](https://unisa.edu.au/USASA)

Follow us on social



[youtube.com/unisouthaustralia](https://youtube.com/unisouthaustralia)

[facebook.com/unisa](https://facebook.com/unisa)

[twitter.com/universitysa](https://twitter.com/universitysa)

[instagram.com/universitysa](https://instagram.com/universitysa)

### Campus wear

UniSA branded clothing is available for purchase online or on campus, including t-shirts, hoodies, vests and jackets.

Check out  
[unisa.edu.au/campuswear](https://unisa.edu.au/campuswear)

### Student newsletter

All UniSA students receive a fortnightly e-newsletter to keep up to date with what's happening on campus and in the student community. You will get the latest information about events, career and volunteering opportunities, stories from around the University, and so much more.



50+ EVENTS  
ACROSS UnISA  
EVERY YEAR



100+ STUDENT  
CLUBS TO  
CHOOSE FROM



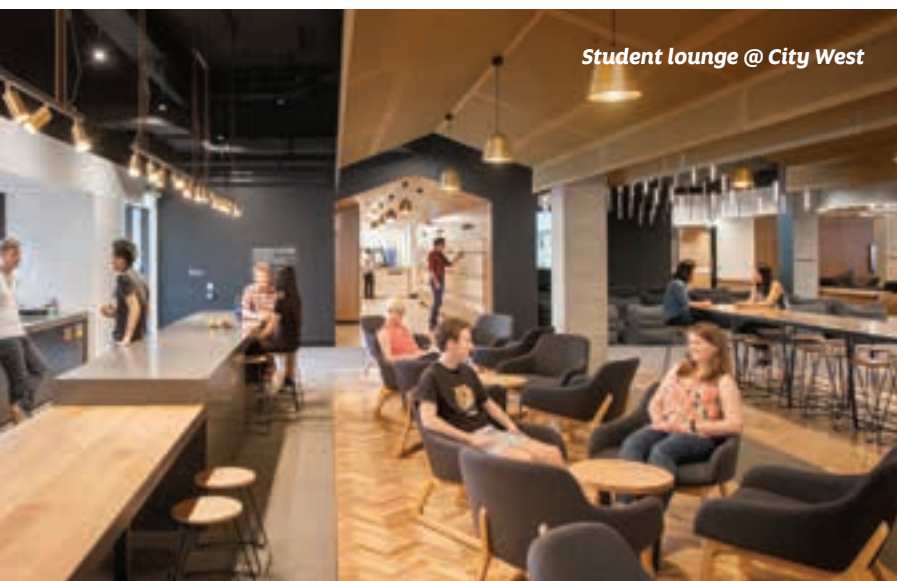
Discover more at [unisa.edu.au/studentlife](https://unisa.edu.au/studentlife)





## **Pridham Hall**

*has over 15 sporting activations, a fully-equipped gym and lap pool.*



*Student lounge @ City West*

## **Your on-campus services**

**Visit your local Campus Central** for help with enrolment, ID cards, fees, timetables and any other questions you have. Open weekdays 8:30am–6:00pm.

**Our Ask the Library service** operates from 8:30am until midnight on week days and between 10:00am–6:00pm on weekends.

**Access the UniSA IT Help Desk** 24 hours a day, 7 days a week.



*Food vendors @ City East*

---

# SUPPORTING YOU

---

## **Student support services**

*Your health and wellbeing is important, so we provide a full range of integrated services to help support you during your studies, including:*

Study support / [Personal counselling](#) / Access and inclusion services / [Aboriginal student services](#) / Career services / [International student services](#) / [Regional student services](#) / [Online study resources](#) / Peer mentoring / [Accommodation services](#) / [Community health clinics](#) / [Health and fitness centres](#) / Legal advice clinic

[unisa.edu.au/studentservices](https://unisa.edu.au/studentservices)

## **WELLBEING AT UnISA**

We are focused on building a healthy campus culture where our students can thrive and feel their best. We offer a range of services that help to promote healthy bodies and minds, such as sport and fitness facilities, counselling and a range of on-campus health clinics. You can also access extensive online resources covering areas like healthy eating habits, mindfulness, sleep, sexual health and managing stress.

[unisa.edu.au/wellbeing](https://unisa.edu.au/wellbeing)

## **PARENT RESOURCES**

There are specific resources available for parents and families so they can also assist you in your transition to university life.

[unisa.edu.au/parents](https://unisa.edu.au/parents)



## SAFEZONE APP

All UniSA students can download the free *SafeZone* app, providing additional security and support when studying on campus. The app allows you to get help quickly in a personal emergency or if someone else needs first aid or general assistance. You can check-in when working alone, after hours or in high risk areas, which shares your status with an on-site response team. You can also receive notifications so you know what to do in an emergency situation. The app is available for download through the App Store or Google Play.



[unisa.edu.au/safezone](https://unisa.edu.au/safezone)

## PAYING FOR YOUR STUDIES

If you are an Australian citizen, your place as a student at UniSA is Commonwealth-supported. This means you are charged for a portion of the cost of your studies and the Australian Government contributes the rest. If eligible, you can defer your contribution through a HECS-HELP loan, and repay it later through the taxation system. Your contribution will depend on what you study. See the fee table for a breakdown of student contribution amounts for 2019.

BAND	AREA OF STUDY	STUDENT CONTRIBUTION <i>For one year of full-time load (1 EFTSL) indicative of 2019 fees</i>
1	Humanities, behavioural science, social studies, foreign languages, visual and performing arts, clinical psychology, nursing and education	\$6,566
2	Computing, built environment, health, engineering, surveying, agriculture, mathematics, statistics, science	\$9,359
3	Law, dentistry, medicine, veterinary science, accounting, administration, economics, commerce	\$10,958

*Some postgraduate programs are also Commonwealth-supported (or CSP), while others are full fee-paying. For more information on fees including eligibility for Commonwealth-supported places, deferring your student contribution through HECS-HELP, FEE-HELP loans, or fee information relating to international students please visit: [unisa.edu.au/fees](https://unisa.edu.au/fees)*

## ACCOMMODATION

There are a variety of student accommodation options including the new UniSA Student Accommodation by Urbanest, offering modern apartments in the Adelaide CBD. Other options include dedicated student housing, homestays, private rentals (advertised on the UniSA Rental Database), non-profit housing and more.



[unisa.edu.au/accommodation](https://unisa.edu.au/accommodation)

## SCHOLARSHIPS

Each year more than 2,500 students from all walks of life benefit from UniSA scholarships and grants worth millions of dollars. Not only do they provide financial assistance, but they also often include valuable work experience, mentoring opportunities and even overseas travel. Go online and use our scholarships search engine to see what you might be eligible for.

[unisa.edu.au/scholarships](https://unisa.edu.au/scholarships)



**"Receiving a UniSA scholarship gave me a fresh start and has allowed me to follow my academic passions, and for that I am very grateful. I dream of being successful in the corporate world and establishing a program to create more employment opportunities for rural school leavers."**

**Alicia Barker**

UniSA Rural Reconnect  
Relocation Scholarship  
Bachelor of Business,  
Bachelor of Laws

# PATHWAYS INTO UniSA

## Find your pathway

Use your Year 12 score .....

### 1 SELECTION RANK

(Selection Rank = ATAR score including any adjustment factors you may be eligible for)

Complete Year 12 and apply using your Selection Rank. You may also be eligible for adjustment factors (bonus points) and/or guaranteed entry.

Or take a UniSA pathway .....

### 2 UniSA COLLEGE

Complete the one-year **Foundation Studies** program, then competitively apply for your preferred UniSA degree.

OR

Complete a two-year **diploma**, then enter second year of one of our 90+ linked UniSA degrees.

Or take an alternative pathway.....

### 3 VOCATIONAL EDUCATION TRAINING (VET)

Apply using a **certificate IV**, **diploma** or **advanced diploma** from TAFE or another RTO. You may also receive credit for your study or be eligible for guaranteed entry.

### 4 SAIBT DIPLOMA

Complete a **diploma** through SAIBT. Then enter second year of a related degree. A minimum GPA is required.

### 5 SPECIAL TERTIARY ADMISSIONS TEST (STAT)

If you are over 18 and haven't completed more than two years of full-time tertiary study with university enrolment in the last two years, you can sit the STAT for entry into UniSA programs.

Or use your previous tertiary study .....

### 6 TERTIARY TRANSFER

If you have completed at least half a year of full-time equivalent study (at either UniSA or another recognised institution) you can apply using your GPA.

### 7 OPEN UNIVERSITIES AUSTRALIA (OUA)

Complete four courses at an appropriate level through Open Universities Australia (OUA), then apply to UniSA based on your GPA.

## Your pathways explained

### 1 SELECTION RANK

If you have completed high school you may still be eligible to gain entry into your preferred UniSA degree using your Year 12 results regardless of when you graduated. Your Selection Rank is valid up until you complete two-years of full-time tertiary study.

### GUARANTEED ENTRY

UniSA offers guaranteed entry into many degrees. If your Selection Rank meets the UniSA guaranteed entry score, you have met the prerequisites and any specific entry requirements, and you have listed the degree as your first preference, you are guaranteed an offer. Please note application timelines may apply.

[unisa.edu.au/guaranteed](https://unisa.edu.au/guaranteed)

### ADJUSTMENT FACTORS

UniSA offers adjustment factors (formerly known as bonus points) to high school students applying for entry. Additional points are based on set equity factors and/or subject choices and are combined with your ATAR score to give you a competitive Selection Rank.

[unisa.edu.au/adjustmentfactors](https://unisa.edu.au/adjustmentfactors)

UniSA College offers educational programs that can help you gain direct entry into a UniSA degree. These programs will prepare you for university study by building your academic skills and prerequisite knowledge. You will experience life as a UniSA student, be taught by UniSA staff and have access to a full-range of support services. After successfully completing your UniSA College program, you will then be able to seamlessly transfer into a range of undergraduate degrees at UniSA.

[unisa.edu.au/college](http://unisa.edu.au/college)

## DIPLOMAS

UniSA College offers seven diplomas, which are two-year (or part-time equivalent) programs, designed to provide a pathway into over 90 linked UniSA degrees for those who do not meet the requirements for direct entry. In first year, you will learn the skills needed to study at a tertiary level and in second year you will start studying first-year courses from your linked UniSA degree. You will be in the same lectures and tutorials as other first-year UniSA students, with the advantage of additional support provided through UniSA College.

On successful completion, you will graduate with a diploma qualification and then transfer into the second year of your chosen UniSA degree. For more information, including entry requirements, visit the UniSA College website.

### APPLY NOW

#### Diploma in Arts

» SATAC code: 426021

#### Diploma in Business

» SATAC code: 426031

#### Diploma in Construction

» SATAC code: 426069

#### Diploma in Engineering

» SATAC code: 426067

#### Diploma in Health

» SATAC code: 426041

#### Diploma in Health (Mount Gambier)

» SATAC code: 476001

#### Diploma in Information Technology

» SATAC code: 426060

#### Diploma in Science and the Environment

» SATAC code: 426065

## FOUNDATION STUDIES

This is a free\* one year program with no minimum entry qualifications required. You will study core courses that will develop your critical writing, communication, research and study skills. You can also choose elective courses as an introduction into a specific area of interest, such as business or health.

After successfully completing this program, you can use your Grade Point Average (GPA) to apply for any UniSA degree (a competitive GPA is required). For more information, including entry requirements, visit the UniSA College website.

### APPLY NOW

» SATAC code: 427021 (Adelaide)

» SATAC code: 477011 (Mount Gambier)

» SATAC code: 467011 (Whyalla)

## ABORIGINAL PATHWAY PROGRAM (APP)

This is a free\* program for Aboriginal students with no previous qualifications. You will complete courses to develop your tertiary learning, computing and academic literacy skills, preparing you for future university studies.

After successfully completing this program, you can use your Grade Point Average (GPA) to apply for any UniSA degree (a competitive GPA is required).

APP is offered at City West Campus and in regional locations including Whyalla, Ceduna, Port Lincoln and Mount Gambier. You will receive local tutoring and support, networking opportunities and peer mentoring, as well as one-on-one support from teaching staff. For more information, including entry requirements, visit the UniSA College website.

### APPLY directly at [unisa.edu.au/app](http://unisa.edu.au/app)

\*Students will be required to pay the Student Services and Amenities Fee determined by the Australian Government.

## PACKAGED PROGRAMS

Another option to consider is applying for a packaged program. This will guarantee# you entry into select UniSA degrees as listed below.

#### Diploma in Arts/Bachelor of Arts

» SATAC code: 424621

#### Diploma in Arts/Bachelor of Early Childhood Education (Honours)

» SATAC code: 426070

#### Diploma in Arts/Bachelor of Primary Education (Honours)

» SATAC code: 426071

#### Diploma in Business/Bachelor of Business

» SATAC code: 424631

#### Diploma in Construction/Bachelor of Construction Management (Honours)

» SATAC code: 426072

#### Diploma in Engineering/Bachelor of Engineering (Honours) (Flexible Entry)

» SATAC code: 426068

#### Diploma in Health/Bachelor of Health Science (Public Health)

» SATAC code: 426051

#### Diploma in Health/Bachelor of Laboratory Medicine (Honours)

» SATAC code: 426066

#### Diploma in Health/Bachelor of Nutrition and Food Sciences

» SATAC code: 426063

#### Diploma in Information Technology/Bachelor of Information Technology

» SATAC code: 426061

#### Diploma in Science and the Environment/Bachelor of Science

» SATAC code: 426064

#### Diploma in Science and the Environment/Bachelor of Environmental Science

» SATAC code: 426062

#### UniSA Foundation Studies/Bachelor of Aviation (Management)^

» SATAC code: 427041

#### UniSA Foundation Studies/Bachelor of Aviation (Pilot)^

» SATAC code: 427031

#Academic and other criteria applies.

^The GPA requirements to transfer from UniSA Foundation Studies to the bachelor programs will be monitored and enforced by the Transition Officer.

## DID YOU KNOW?

Diploma programs can be listed on your SATAC application as a back-up option to your preferred UniSA degrees



### 3 VOCATIONAL EDUCATION TRAINING (VET)

A completed certificate IV, diploma or advanced diploma from TAFE or another Registered Training Organisation (RTO) may be all you need to apply for a UniSA degree.

#### GUARANTEED ENTRY

If your completed VET award meets the UniSA guaranteed entry score, you have met the prerequisites and any specific entry requirements, and you have listed the degree as your first preference, you are guaranteed an offer.

#### STUDY CREDIT

If you are successful in securing a place in a relevant UniSA degree, you may also be eligible to receive credit for your previous study, typically reducing the time it takes to complete the program.

#### VISIT OUR ONLINE CREDIT ASSESSOR

*See an instant snapshot of how your qualifications may count towards your UniSA degree.*

[unisa.edu.au/credit](https://unisa.edu.au/credit)

### 4 SAIBT DIPLOMA

UniSA and SAIBT have a strong partnership that spans more than 15 years and has produced over 5,000 successful graduates. SAIBT's diploma programs provide direct entry with credit into more than 80 UniSA degrees (subject to academic results). Students have access to UniSA facilities and study in a diverse learning environment with small classes and personalised teaching.

[saibt.com.au](https://saibt.com.au)

### 5 SPECIAL TERTIARY ADMISSIONS TEST (STAT)

If you do not have a competitive result from Year 12, TAFE/RTO or previous university study, you may qualify for special entry into your preferred UniSA degree by choosing to sit the STAT – a two-hour test made up of 70 multiple choice questions designed to test your aptitude for tertiary study. Your results will be used to create a ranking that you can then use to compete for entry against other special entry applicants. To be eligible you must be aged over 18 years by 1 February (or 1 July for midyear entry) in the year you wish to commence your study. UniSA also offers full-day workshops to help you prepare.

[unisa.edu.au/stat](https://unisa.edu.au/stat)



## Action

- Explore your pathway options further at [unisa.edu.au/pathways](https://unisa.edu.au/pathways)

### MY PATHWAYS

.....

.....

.....

.....

.....

.....

.....

.....

.....

.....

## 6 TERTIARY TRANSFER

If your Year 12 results were lower than expected, you have the option of starting a different degree then using your competitive Grade Point Average (GPA) to transfer into your first preference. You can do this after completing four courses, which is typically one full-time study period at UniSA or another recognised higher education institution.

Students are also able to transfer into different degrees if they change their mind, using their competitive GPA and after completing a minimum of four courses.

## 7 OPEN UNIVERSITIES AUSTRALIA (OUA)

If you have completed at least four courses through OUA at an appropriate level, you may use your Grade Point Average (GPA) to apply for entry into a UniSA degree. OUA offers undergraduate courses across a variety of disciplines such as accounting and business, engineering, health, languages, management, and more.

[open.edu.au](https://open.edu.au)

**To discuss your pathway options**  
contact Future Student Enquiries on  
(08) 8302 2376  
or [unisa.edu.au/enquire](https://unisa.edu.au/enquire)

You can also schedule a 1:1 appointment at  
[unisa.edu.au/booking](https://unisa.edu.au/booking)



Explore your pathway options further at [unisa.edu.au/pathways](https://unisa.edu.au/pathways)

# STUDY ONLINE

Tailor your degree so that you have time to travel, work and study from any location. We offer over 70 flexible online degrees (noting some on-campus study may be required) and 100% online degrees through UniSA Online. Students studying online also have the benefit of accessing campus facilities and student support services.

For more information about our flexible degrees visit, [unisa.edu.au/study](https://unisa.edu.au/study)

*70+ flexible online  
degrees available*

## **Your study modes**



### **On-campus**

*with some online study available*



### **On-campus/online**

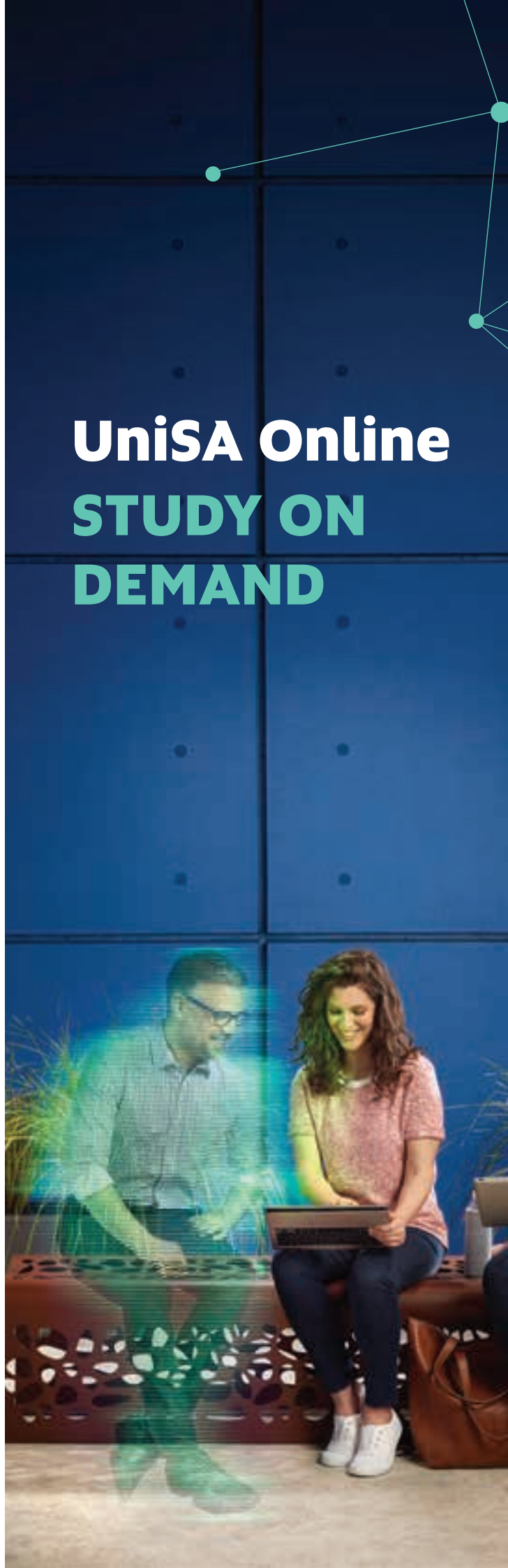
*blended learning*



### **100% online**

*through UniSA Online*

## UniSA Online STUDY ON DEMAND



## Take full control of your study with our 100% online, career-focused degrees.

Get online student support seven days a week, plan your study to fit around your life, access learning resources 24/7, and log in to an online interactive learning environment anywhere, any time and on any device.

Explore our range of degrees in:

ACCOUNTING
CONSTRUCTION MANAGEMENT
COMMUNICATION
COMMUNITY HEALTH
CRIMINAL JUSTICE
DIGITAL MEDIA
FINANCIAL PLANNING
HUMAN RESOURCE MANAGEMENT
IT AND DATA ANALYTICS
MANAGEMENT
MARKETING
MARKETING AND COMMUNICATION
NUTRITION AND EXERCISE
PSYCHOLOGICAL SCIENCE AND SOCIOLOGY
PUBLIC HEALTH

### Why Study On Demand?

**Specifically designed for  
online learning**

**All assessments are  
100% online**

**Four start dates per year  
in January, April, June and  
September**

**24/7 access to learning  
resources**

**Learn in 10-week blocks**

**Flexible around your life**

## SUPPORT SERVICES

We provide personalised support services over extended hours – including on weekends – so you can get help when you need it. Whether you need help with assignments, referencing, administrative or technical support, you'll have on demand access to a dedicated team ready to assist you every step of the way.



**Access online academic support  
seven days a week (including at  
night on weekdays)**



**Connect with a dedicated  
student adviser**



**Access tech support 24/7**

## SCHOLARSHIPS AND GRANTS

There are a range of scholarships and grants available when you enrol in a UniSA Online degree. Visit the website to see what you may be eligible for.

[unisaonline.edu.au/scholarships](https://unisaonline.edu.au/scholarships)

## CREDIT CHECK

Fast-track your degree and receive credit for past study and/or work experience. All you need to do is take our simple credit check to see what you are eligible for.

[unisaonline.edu.au/credit](https://unisaonline.edu.au/credit)

## KEY DATES

Application closing dates for each term can be found at [unisaonline.edu.au/key-dates](https://unisaonline.edu.au/key-dates)

### How to apply

**Check your eligibility**

**Gather your relevant  
documents**

**Complete your application and  
send through your documents**

*To apply, visit [unisaonline.edu.au](https://unisaonline.edu.au)  
or call 1800 531 962*

# YOUR NEXT STEPS



## CHOOSE

Now is the time to decide. Gather all the information you need, explore different websites, read brochures, and attend UniSA Open Day. Choose what careers you are interested in and what degrees you want to study, check you have the prerequisite subjects, and make sure you understand the entry requirements.

[unisa.edu.au/study](https://unisa.edu.au/study)  
[unisa.edu.au/infosessions](https://unisa.edu.au/infosessions)

### TIP

*Get on campus. How will you know if UniSA is right for you if you don't check us out? Attend UniSA events throughout August to talk through degree options, careers and more.*



## APPLY

Armed with your list of preferences, you can now apply to UniSA through the SATAC website. Explore our resources to help with your application.

[unisa.edu.au/apply](https://unisa.edu.au/apply)

### TIP

*Apply to SATAC using your own mobile number and a personal email address – one you can access after high school.*

*Remember to list your preferences in order of what you want to study most.*



## CHECK & CONFIRM

Year 12 results are in and you may be eligible for adjustment factors. Give our Future Student Enquiries Team a call on (08) 8302 2376 to confirm your Selection Rank (ATAR + adjustment factors), which will be used by SATAC to assess your competitiveness.

Also, check to see if you are eligible for guaranteed entry into your preferred UniSA degrees.

It's important to confirm your preferences by the change of preference deadline to be considered for an offer in December.

[unisa.edu.au/adjustmentfactors](https://unisa.edu.au/adjustmentfactors)  
[unisa.edu.au/guaranteed](https://unisa.edu.au/guaranteed)

### TIP

*Remember to pay your SATAC application fee. If you don't, you won't be eligible to receive an offer.*



## RESPOND

There is an offer round in December that will consider all preferences.

If you don't receive an offer in this round, remember that the offer round in January is still to come.

If you do receive an offer, read your SATAC email carefully for important information about responding to your offer and the program enrolment process.

[satac.edu.au](https://satac.edu.au)

Not the result you expected? You can also explore our wide range of alternative pathway options into university.

[unisa.edu.au/pathways](https://unisa.edu.au/pathways)

### TIP

*Didn't get an offer? Contact Future Student Enquiries to discuss your options on (08) 8302 2376 or [unisa.edu.au/enquire](https://unisa.edu.au/enquire)*



## PREPARE

Your university adventure starts here. Keep O-Week free to explore your campus, find lecture rooms, navigate through your online student portal, and make new friends.

[unisa.edu.au/newstudents](https://unisa.edu.au/newstudents)

### TIP

*Make it a priority to attend orientation activities. O-Week is the best time to sign up for UniSA Sport teams, the student association (USASA), and different clubs and societies.*

**18 August 2019**

Come along to UniSA Open Day at  
City East and City West campuses  
from 9:00am–4:30pm

*Discover all of our campus events  
at [unisa.edu.au/campusdays](http://unisa.edu.au/campusdays)*

**5 August 2019**

SATAC applications open

**30 September 2019**

Early closing deadline

*Note: Fees will increase for applications  
submitted after this date.*

**2 December 2019**

Equal consideration deadline

**18 December 2019**

Change of preference deadline  
for December offer round

**20 December 2019**

December offer round  
for all preferences

**6 January 2020**

Response deadline  
for December offers

**10 January 2020**

Main January offer round

**24–28 February 2020**

O-Week at UniSA

**2 March 2020**

UniSA classes commence

# CAMPUS DAYS

## ATTEND OUR EVENTS

Our events give you the opportunity to ask  
questions about different degrees and careers,  
take a tour around campus, attend presentations,  
and talk to current staff and students.

### UniSA Open Day Sunday 18 August

9:00am–4:30pm / City West Campus  
and City East Campus

### Mount Gambier Open Day Sunday 11 August

11:00am–4:00pm / Mount Gambier Campus

### Whyalla Open Day Sunday 25 August

11:00am–3:00pm / Whyalla Campus

### Mawson Lakes Campus Day Tuesday 27 August

4:00pm–7:30pm / Mawson Lakes Campus

### Magill Campus Day Wednesday 28 August

4:00pm–8:00pm / Magill Campus

[unisa.edu.au/campusdays](http://unisa.edu.au/campusdays)

**We also offer campus tours in the school holidays.**

[unisa.edu.au/campustours](http://unisa.edu.au/campustours)

# UNDERGRADUATE DEGREES OFFERED IN 2020

	SATAC code	Program length (years)	Home campus	Study mode <sup>†</sup>	Part-time study	Mid-year entry	Selection Rank (March 2019 cut off) <sup>10</sup>	Guaranteed Entry – Selection Rank	Prerequisite at Stage 2 (Minimum score C-)	Assumed Knowledge (Stage 2 unless stated)	Adjustment Factors <sup>4</sup> (Previously known as Bonus Points)	Guaranteed Entry – Selection Rank (VET)	Minimum VET Entry	UNISA College Pathways	STAT Entry
<b>Art, Architecture and Design</b>															
Bachelor of Architectural Studies	424441	3	CW	OC	Y	Y	70.35	80.00			Y	AdvDip	CIV	DipA, FS	Y
Bachelor of Contemporary Art	424801	3	CW	OC	Y	Y	61.05	70.00			Y	Dip	CIV	DipA, FS	Y
Bachelor of Design (Communication Design)	424151	3	CW	OC	Y	Y	60.50	70.00			Y	Dip	CIV	DipA, FS	Y
Bachelor of Design (Illustration and Animation)	424791	3	CW	OC	Y	Y	61.20	70.00			Y	Dip	CIV	DipA, FS	Y
Bachelor of Design (Illustration and Animation) (TAFESA Diploma program in Game Art)	494021	3	CW	OC	Y	Y	65.35	70.00			Y	Dip	CIV	DipA, FS	Y
Bachelor of Design (Product Design)	424551	3	CW	OC	Y	Y	66.05	70.00			Y	Dip	CIV	DipA, FS	Y
Bachelor of Interior Architecture	424081	4	CW	OC	Y	Y	66.55	75.00			Y	Dip	CIV	DipA, FS	Y
<b>Aviation</b>															
Bachelor of Aviation (Management)	434131	3	ML	OC	Y	Y	60.10	70.00			Y	Dip	CIV	FS	Y
Bachelor of Aviation (Pilot)	434141	3	ML	OC	Y	Y	67.10	75.00			Y	Dip	CIV	FS	Y
<b>Business, Management, Accounting, Finance, Economics and Property</b> - Also consider 3+1 Pathway to Masters in Business, visit <a href="http://unisa.edu.au/business3plus1">unisa.edu.au/business3plus1</a>															
Bachelor of Business	424571	3	CW	OC/OL	Y	Y	65.05	70.00			Y	CIV	CIV	DipB, FS	Y
Bachelor of Business (Design and Marketing)	424920	3	CW	OC/OL	Y	Y	65.35	70.00			Y	Dip	CIV	DipB, FS	Y
Bachelor of Business (Economics, Finance and Trade)	424091	3	CW	OC/OL	Y	Y	65.70	70.00			Y	Dip	CIV	DipB, FS	Y
Bachelor of Business (Finance)	424051	3	CW	OC/OL	Y	Y	65.10	70.00			Y	Dip	CIV	DipB, FS	Y
Bachelor of Business (Financial Planning)	424921	3	CW	OC/OL	Y	Y	69.40	70.00			Y	Dip	CIV	DipB, FS	Y
Bachelor of Business (Human Resource Management)	424351	3	CW	OC/OL	Y	Y	65.20	70.00			Y	Dip	CIV	DipB, FS	Y
Bachelor of Business (Information Strategy and Management)	424671	3	CW	OC/OL	Y	Y	76.45	70.00			Y	CIV	CIV	DipB, FS	Y
Bachelor of Business (Innovation and Entrepreneurship)	424591	3	CW	OC/OL	Y	Y	67.90	70.00			Y	CIV	CIV	DipB, FS	Y
Bachelor of Business (International Business)	424681	3	CW	OC/OL	Y	Y	68.40	70.00			Y	CIV	CIV	DipB, FS	Y
Bachelor of Business (Legal Studies)	424611	3	CW	OC	Y	Y	65.80	70.00			Y	Dip	CIV	DipB, FS	Y
Bachelor of Business (Logistics and Supply Chain Management)	424511	3	CW	OC/OL	Y	Y	81.40	70.00			Y	Dip	CIV	DipB, FS	Y
Bachelor of Business (Management)	424101	3	CW	OC/OL	Y	Y	65.05	70.00			Y	Dip	CIV	DipB, FS	Y
Bachelor of Business (Marketing)	424111	3	CW	OC/OL	Y	Y	65.30	70.00			Y	Dip	CIV	DipB, FS	Y
Bachelor of Business (Property)	424131	3	CW	OC/OL	Y	Y	65.30	70.00			Y	Dip	CIV	DipB, FS	Y
Bachelor of Business (Real Estate Practice)	424922	3	CW	OC/OL	Y	Y	66.25	70.00			Y	Dip	CIV	DipB, FS	Y
Bachelor of Business (Sport and Recreation Management)	434191	3	CW	OC	Y	Y	65.80	70.00			Y	Dip	CIV	DipB, FS	Y
Bachelor of Business (Tourism and Event Management)	424371	3	CW	OC/OL	Y	Y	65.15	70.00			Y	Dip	CIV	DipB, FS	Y
Bachelor of Commerce (Accounting)	424181	3	CW	OC/OL	Y	Y	65.15	70.00			Y	Dip	CIV	DipB, FS	Y
Bachelor of Commerce (Accounting), Bachelor of Business (Finance)	424191	4	CW	OC/OL	Y	Y	65.30	70.00			Y	Dip	CIV	DipB, FS	Y
Bachelor of Marketing and Communication	424451	3	CW, M	OC/OL	Y	Y	65.35	70.00			Y	Dip	CIV	DipA, FS	Y
Bachelor of Psychological Science (Counselling and Interpersonal Skills), Bachelor of Business (Human Resource Management)	444541	4	M, CW	OC	Y	Y	65.25	75.00			Y	Dip	CIV	FS	Y
<b>Communication, Arts, Media Arts and Journalism</b>															
Bachelor of Arts	444341	3	M	OC	Y	Y	60.40	70.00			Y	Dip	CIV	DipA, FS	Y
Bachelor of Arts (Aboriginal Cultures and Australian Society)	444561	3	M	OC/OL	Y	Y	n/a	70.00			Y	Dip	CIV	DipA, FS	Y
Bachelor of Arts (Applied Linguistics)	444391	3	M	OC	Y	Y	96.15	70.00			Y	Dip	CIV	DipA, FS	Y
Bachelor of Arts (Creative Writing and Literature)	444351	3	M	OC	Y	Y	66.05	70.00			Y	Dip	CIV	DipA, FS	Y
Bachelor of Arts (Cultural Studies)	444593	3	M	OC	Y	Y	n/a	70.00			Y	Dip	CIV	DipA, FS	Y
Bachelor of Arts (English Language)	444594	3	M	OC	Y	N	n/a	70.00			Y	Dip	CIV	DipA, FS	Y
Bachelor of Arts (History and Global Politics)	444592	3	M	OC	Y	Y	64.80	70.00			Y	Dip	CIV	DipA, FS	Y
Bachelor of Arts (Languages)	444381	3	M	OC	Y	N	69.25	70.00			Y	Dip	CIV	DipA, FS	Y
Bachelor of Arts (Law, Policy and Politics)	444598	3	M	OC	Y	Y	61.60	70.00			Y	Dip	CIV	DipA, FS	Y
Bachelor of Arts (Performing Arts)	444401	3	M	OC	Y	Y	66.00	70.00			Y	Dip	CIV	DipA, FS	Y
Bachelor of Arts (Psychology)	444595	3	M	OC	Y	Y	60.60	70.00			Y	Dip	CIV	DipA, FS	Y
Bachelor of Arts (Screen Studies)	444597	3	M	OC	Y	Y	67.25	70.00			Y	Dip	CIV	DipA, FS	Y
Bachelor of Arts (Social Media)	444596	3	M	OC	Y	Y	64.70	70.00			Y	Dip	CIV	DipA, FS	Y
Bachelor of Arts (Sociology)	444411	3	M	OC	Y	Y	69.70	70.00			Y	Dip	CIV	DipA, FS	Y
Bachelor of Communication and Media	444421	3	M, CW	OC	Y	Y	61.20	70.00			Y	Dip	CIV	DipA, FS	Y
Bachelor of Journalism and Professional Writing	444431	3	M	OC	Y	Y	65.85	70.00			Y	Dip	CIV	DipA, FS	Y
Bachelor of Journalism and Professional Writing, Bachelor of Arts (Creative Writing and Literature)	444461	4	M	OC	Y	Y	60.75	70.00			Y	Dip	CIV	DipA, FS	Y
Bachelor of Marketing and Communication	424451	3	CW, M	OC/OL	Y	Y	65.35	70.00			Y	Dip	CIV	DipA, FS	Y
Bachelor of Media Arts	444471	3	M	OC	Y	Y	60.45	70.00			Y	Dip	CIV	DipA, FS	Y
Diploma in Languages	AO	1	M	OC	Y	Y						n/a	n/a	n/a	N
<b>Creative Industries</b>															
Bachelor of Creative Industries	424930	3	CW~	OC/OL	Y	N	NEW	70.00			Y	CIV	CIV	DipA, FS	Y
Animation and Visual Effects	424930	3	CW~	OC/OL	Y	N	NEW	70.00			Y	CIV	CIV	DipA, FS	Y
Comicbook Creation	424930	3	CW~	OC/OL	Y	N	NEW	70.00			Y	CIV	CIV	DipA, FS	Y
Communication and Media	424930	3	CW~	OC/OL	Y	N	NEW	70.00			Y	CIV	CIV	DipA, FS	Y
Contemporary Art Studies	424930	3	CW~	OC/OL	Y	N	NEW	70.00			Y	CIV	CIV	DipA, FS	Y
Creative Writing and Literature	424930	3	CW~	OC/OL	Y	N	NEW	70.00			Y	CIV	CIV	DipA, FS	Y
Digital Media	424930	3	CW~	OC/OL	Y	N	NEW	70.00			Y	CIV	CIV	DipA, FS	Y
Festivals	424930	3	CW~	OC/OL	Y	N	NEW	70.00			Y	CIV	CIV	DipA, FS	Y

	SATAC code	Program length (years)	Home campus	Study mode <sup>+</sup>	Part-time study	Mid-year entry	Selection Rank (March 2019 cut off) <sup>10</sup>	Guaranteed Entry – Selection Rank	Prerequisite at Stage 2 (Minimum score C-)	Assumed Knowledge (Stage 2 unless stated)	Adjustment Factors <sup>4</sup> (Previously known as Bonus Points)	Guaranteed Entry – Selection Rank (VET)	Minimum VET Entry	UNISA College Pathways	STAT Entry
<b>Film and Television</b>	424930	3	CW~	OC/OL	Y	N	NEW	70.00			Y	CIV	CIV	DipA, FS	Y
<b>Games Design and Production</b>	424930	3	CW~	OC/OL	Y	N	NEW	70.00			Y	CIV	CIV	DipA, FS	Y
<b>Performing Arts</b>	424930	3	CW~	OC/OL	Y	N	NEW	70.00			Y	CIV	CIV	DipA, FS	Y
<b>Screen Studies</b>	424930	3	CW~	OC/OL	Y	N	NEW	70.00			Y	CIV	CIV	DipA, FS	Y
<b>Social Media</b>	424930	3	CW~	OC/OL	Y	N	NEW	70.00			Y	CIV	CIV	DipA, FS	Y
<b>Education</b>															
Bachelor of Early Childhood Education (Honours) <sup>^2</sup>	444590	4	M	OC/OL	Y	Y	70.30	80.00			Y	Dip	Dip	DipA, FS	Y
Bachelor of Early Childhood Education (Honours) <sup>^2</sup>	434240	4	ML	OC/OL	Y	Y	72.40	80.00			Y	Dip	Dip	DipA, FS	Y
Bachelor of Primary Education (Honours) <sup>^2</sup>	444591	4	M	OC/OL	Y	Y	70.45	80.00			Y	Dip	Dip	DipA, FS	Y
Bachelor of Primary Education (Honours) <sup>^2</sup>	434241	4	ML	OC/OL	Y	Y	70.00	80.00			Y	Dip	Dip	DipA, FS	Y
Bachelor of Secondary Education (Honours) <sup>^2</sup>	434003	4	ML	OC	Y	N	NEW	80.00	#12	#12	Y	Dip	Dip	DipA, FS	Y
Bachelor of Arts/Master of Teaching (Secondary)	444521	5	M, ML	OC	Y	Y	60.40	70.00			Y	Dip	CIV	DipA, FS	Y
Bachelor of Arts (Aboriginal Cultures and Australian Society)/Master of Teaching (Secondary)	444571	5	M, ML	OC/OL	Y	Y	n/a	70.00			Y	Dip	CIV	DipA, FS	Y
Bachelor of Media Arts/Master of Teaching (Secondary)	444531	5	M, ML	OC	Y	Y	60.45	70.00			Y	Dip	CIV	DipA, FS	Y
Bachelor of Contemporary Art/Master of Teaching (Secondary)	424811	5	CW, ML	OC	Y	Y	61.05	70.00			Y	Dip	CIV	DipA, FS	Y
Bachelor of Human Movement/Master of Teaching (Secondary)	414401	5	CE, ML	OC	Y	N	75.35	80.00			Y	Dip	Dip	DipH, FS	Y
Bachelor of Science/Master of Teaching (Secondary)	434101	5	ML	OC	Y	Y	62.25	70.00	#10	#4	Y	Dip	CIV	DipSE, FS	Y
Bachelor of Mathematics (Data Science)/Master of Teaching (Secondary)	434221	5	ML	OC/OL	Y	Y	74.65	80.00	#1		Y	Dip	CIV	MSC, FS	Y
Bachelor of Mathematics (Industrial and Applied Mathematics)/Master of Teaching (Secondary)	434181	5	ML	OC/OL	Y	Y	70.70	80.00	#1		Y	Dip	CIV	MSC, FS	Y
<b>Engineering</b> • Also consider 4+1 Pathway to Masters in Engineering, <a href="http://unisa.edu.au/engineering4plus1">unisa.edu.au/engineering4plus1</a>															
Associate Degree in Engineering	435021	2	ML	OC <sup>9</sup>	Y	Y	60.55	65.00	#13		Y	CIV	CIV	FS	Y
Bachelor of Engineering (Honours) (Civil and Construction Management)	434151	4	ML	OC	Y	Y	73.85	75.00	#1	#2	Y	Dip	CIV	DipE, FS	Y
Bachelor of Engineering (Honours) (Civil and Structural)	434941	4	ML	OC	Y	Y	71.65	75.00	#1	#2	Y	Dip	CIV	DipE, FS	Y
Bachelor of Engineering (Honours) (Civil)	434481	4	ML	OC	Y	Y	75.80	75.00	#1	#2	Y	Dip	CIV	DipE, FS	Y
Bachelor of Engineering (Honours) (Electrical and Electronic)	434951	4	ML	OC	Y	Y	73.25	75.00	#1	#2	Y	Dip	CIV	DipE, FS	Y
Bachelor of Engineering (Honours) (Electrical and Mechatronics)	434451	4	ML	OC	Y	Y	81.00	75.00	#1	#2	Y	Dip	CIV	DipE, FS	Y
Bachelor of Engineering (Honours) (Flexible Entry)	434242	4	ML	OC	Y	Y	71.55	70.00	#1	#2	Y	Dip	CIV	DipE, FS	Y
Bachelor of Engineering (Honours) (Mechanical and Advanced Manufacturing)	434791	4	ML	OC	Y	Y	77.00	75.00	#1	#2	Y	Dip	CIV	DipE, FS	Y
Bachelor of Engineering (Honours) (Mechanical and Mechatronics)	434781	4	ML	OC	Y	Y	75.80	75.00	#1	#2	Y	Dip	CIV	DipE, FS	Y
Bachelor of Engineering (Honours) (Mechanical)	434321	4	ML	OC	Y	Y	72.30	75.00	#1	#2	Y	Dip	CIV	DipE, FS	Y
Bachelor of Engineering (Honours) (Surveying)	434002	4	ML	OC	Y	Y	NEW	75.00	#1	#2	Y	Dip	CIV	DipE, FS	Y
<b>Information Technology and Mathematics</b>															
Bachelor of Information Technology	434041	3	ML	OC/OL	Y	Y	60.25	70.00			Y	Dip	CIV	DipIT, FS	Y
Bachelor of Information Technology (Games and Entertainment Design)	434881	3	ML	OC/OL	Y	Y	61.70	70.00			Y	Dip	CIV	DipIT, FS	Y
Bachelor of Information Technology (Honours) (Enterprise Business Solutions)	434121	4	ML	OC	N	N	82.10	90.00			Y	DipIT	DipIT	DipIT	Y
Bachelor of Information Technology (Mobile Application Development)	434091	3	ML	OC/OL	Y	Y	69.60	70.00			Y	Dip	CIV	DipIT, FS	Y
Bachelor of Information Technology (Networking and Cybersecurity)	434891	3	ML	OC/OL	Y	Y	62.50	70.00			Y	Dip	CIV	DipIT, FS	Y
Bachelor of Information Technology (Software Development)	434871	3	ML	OC/OL	Y	Y	60.25	70.00			Y	Dip	CIV	DipIT, FS	Y
Bachelor of Mathematics (Data Science)	434171	3	ML	OC/OL	Y	Y	74.65	80.00	#1		Y	Dip	CIV	MSC, FS	Y
Bachelor of Mathematics (Industrial and Applied Mathematics)	434161	3	ML	OC/OL	Y	Y	94.20	80.00	#1		Y	Dip	CIV	MSC, FS	Y
Bachelor of Software Engineering (Honours)	434211	4	ML	OC/OL	Y	Y	71.65	80.00			Y	DipIT	DipIT	DipIT	Y
<b>Law</b>															
Bachelor of Laws (Honours)	424821	4	CW	OC	Y	Y	85.35	90.00			Y	AdvDip	Dip	FS	Y
Bachelor of Laws (Honours), Bachelor of Arts	424831	5	CW, M	OC	Y	Y	85.25	90.00			Y	AdvDip	Dip	FS	Y
Bachelor of Laws (Honours), Bachelor of Arts (History and Global Politics)	424831	5	CW, M	OC	Y	Y	85.25	90.00			Y	AdvDip	Dip	FS	Y
Bachelor of Laws (Honours), Bachelor of Business (Economics, Finance and Trade)	424831	5	CW	OC	Y	Y	85.25	90.00			Y	AdvDip	Dip	FS	Y
Bachelor of Laws (Honours), Bachelor of Business (Human Resource Management)	424831	5	CW	OC	Y	Y	85.25	90.00			Y	AdvDip	Dip	FS	Y
Bachelor of Laws (Honours), Bachelor of Business (Management)	424831	5	CW	OC	Y	Y	85.25	90.00			Y	AdvDip	Dip	FS	Y
Bachelor of Laws (Honours), Bachelor of Business (Marketing)	424831	5	CW	OC	Y	Y	85.25	90.00			Y	AdvDip	Dip	FS	Y
Bachelor of Laws (Honours), Bachelor of Business (Sport and Recreation Management)	424831	5	CW	OC	Y	Y	85.25	90.00			Y	AdvDip	Dip	FS	Y
Bachelor of Laws (Honours), Bachelor of Business (Tourism and Event Management)	424831	5	CW	OC	Y	Y	85.25	90.00			Y	AdvDip	Dip	FS	Y
Bachelor of Laws (Honours), Bachelor of Commerce (Accounting)	424831	5	CW	OC	Y	Y	85.25	90.00			Y	AdvDip	Dip	FS	Y
Bachelor of Laws (Honours), Bachelor of Journalism and Professional Writing	424831	5	CW, M	OC	Y	Y	85.25	90.00			Y	AdvDip	Dip	FS	Y
Bachelor of Laws (Honours), Bachelor of Psychological Science	424831	5	CW, M	OC	Y	Y	85.25	90.00			Y	AdvDip	Dip	FS	Y
<b>Nursing, Health and Medical Sciences</b>															
Bachelor of Clinical Exercise Physiology (Honours)	414441	4	CE	OC	Y	N	91.10	n/a			Y	n/a	AdvDip	FS	Y
Bachelor of Exercise and Sport Science	414461	3	CE	OC	Y	N	80.20	90.00			Y	Dip	Dip	DipH, FS	Y
Bachelor of Exercise and Sport Science, Bachelor of Nutrition and Food Sciences	414471	4	CE	OC	Y	N	80.10	90.00			Y	Dip	Dip	FS	Y

# UNDERGRADUATE DEGREES OFFERED IN 2020

	SATAC code	Program length (years)	Home campus	Study mode <sup>+</sup>	Part-time study	Mid-year entry	Selection Rank (March 2019 cut off) <sup>10</sup>	Guaranteed Entry – Selection Rank	Prerequisite at Stage 2 (Minimum score C-)	Assumed Knowledge (Stage 2 unless stated)	Adjustment Factors <sup>4</sup> (Previously known as Bonus Points)	Guaranteed Entry – Selection Rank (VET)	Minimum VET Entry	UniSA College Pathways	STAT Entry
Bachelor of Exercise and Sport Science, Bachelor of Psychological Science (Counselling and Interpersonal Skills)	414451	4	CE, M	OC	Y	N	80.50	90.00			Y	Dip	Dip	FS	Y
Bachelor of Health Science (Public Health)	414501	3	CE	OC	Y	N	NEW	75.00			Y	Dip	Dip	DipH, FS	Y
Bachelor of Human Movement	414231	3	CE	OC	Y	N	75.35	80.00			Y	Dip	Dip	DipH, FS	Y
Bachelor of Human Movement, Bachelor of Nutrition and Food Sciences	414431	4	CE	OC	Y	N	75.70	80.00			Y	Dip	Dip	FS	Y
Bachelor of Human Movement, Bachelor of Psychological Science (Counselling and Interpersonal Skills)	414421	4	CE, M	OC	Y	N	75.70	80.00			Y	Dip	Dip	FS	Y
Bachelor of Laboratory Medicine (Honours)	414491	4	CE	OC	Y	N	76.75	85.00	#3		Y	Dip	Dip	DipH, FS	Y
Bachelor of Medical Radiation Science (Medical Imaging)	414371	4	CE	OC	N	N	99.00	n/a			Y	n/a	AdvDip	FS	Y
Bachelor of Medical Radiation Science (Nuclear Medicine)	414341	4	CE	OC	N	N	98.65	n/a			Y	n/a	AdvDip	FS	Y
Bachelor of Medical Radiation Science (Radiation Therapy)	414361	4	CE	OC	N	N	98.30	n/a			Y	n/a	AdvDip	FS	Y
Bachelor of Medical Science	414381	3	CE	OC	Y	N	71.70	85.00			Y	Dip	Dip	DipH, FS	Y
Bachelor of Midwifery**	414241	3	CE	OC/OL	Y	N	89.05	n/a			Y	n/a	AdvDip	FS	Y
Bachelor of Nursing#^	414141	3	CE	OC/OL	Y	N	63.10	70.00			Y	#9	Dip, #5	DipH, FS	Y
Bachelor of Nutrition and Food Sciences	414291	3	CE	OC	Y	N	70.45	80.00			Y	Dip	Dip	DipH, FS	Y
Bachelor of Occupational Therapy (Honours)	414500	4	CE	OC	N	N	93.05	n/a			Y	n/a	AdvDip	FS	Y
Bachelor of Pharmaceutical Science	414331	3	CE	OC	Y	N	72.30	80.00	#3		Y	Dip	Dip	DipH, FS	Y
Bachelor of Pharmacy (Honours)	414411	4	CE	OC	Y	N	80.70	85.00	#3		Y	Dip	Dip	FS	Y
Bachelor of Physiotherapy (Honours)	414481	4	CE	OC	N	N	98.00	n/a		#11	Y	n/a	AdvDip	FS	Y
Bachelor of Podiatry	414321	4	CE	OC	N	N	80.25	n/a		#11	Y	n/a	AdvDip	FS	Y
<b>Psychology, Social Work and Human Services</b>															
Bachelor of Exercise and Sport Science, Bachelor of Psychological Science (Counselling and Interpersonal Skills)	414451	4	CE, M	OC	Y	N	80.50	90.00			Y	Dip	Dip	FS	Y
Bachelor of Human Movement, Bachelor of Psychological Science (Counselling and Interpersonal Skills)	414421	4	CE, M	OC	Y	N	75.70	80.00			Y	Dip	Dip	FS	Y
Bachelor of Psychological Science	444211	3	M	OC	Y	Y	60.15	70.00			Y	Dip	CIV	DipA, FS	Y
Bachelor of Psychological Science (Cognitive Neuroscience)	444331	3	M, CE	OC	Y	N	66.05	80.00			Y	AdvDip	CIV	FS	Y
Bachelor of Psychological Science (Counselling and Interpersonal Skills)	444481	3	M	OC	Y	Y	60.35	70.00			Y	Dip	CIV	DipA, FS	Y
Bachelor of Psychological Science (Counselling and Interpersonal Skills), Bachelor of Business (Human Resource Management)	444541	4	M, CW	OC	Y	Y	65.25	75.00			Y	Dip	CIV	FS	Y
Bachelor of Psychology (Honours)	444221	4	M	OC	Y	N	80.80	95.00			Y	AdvDip	Dip	FS	Y
Bachelor of Psychology (Honours) (Cognitive Neuroscience)	444551	4	M, CE	OC	Y	N	85.15	95.00			Y	AdvDip	Dip	FS	Y
Bachelor of Social Science (Ageing and Disability)	444599	3	M	OC	Y	Y	67.05	70.00			Y	Dip	CIV	DipA, FS	Y
Bachelor of Social Science (Human Services)	444101	3	M	OC	Y	Y	64.55	70.00			Y	Dip	CIV	DipA, FS	Y
Bachelor of Social Science (Human Services), Bachelor of Arts	444581	4	M	OC	Y	Y	69.30	70.00			Y	Dip	CIV	DipA, FS	Y
Bachelor of Social Science (Human Services), Bachelor of Psychological Science	444241	4	M	OC	Y	Y	61.40	70.00			Y	Dip	CIV	DipA, FS	Y
Bachelor of Social Work^	444111	4	M	OC	Y	Y	60.45	70.00			Y	Dip	CIV	DipA, FS	Y
Bachelor of Social Work (Honours)	444491	4	M	OC	Y	N	79.50	85.00			Y	AdvDip	CIV	FS	Y
<b>Science, Construction and the Environment</b>															
Bachelor of Construction Management	414301	3	CE	OC	Y	Y	67.35	70.00			Y	Dip	CIV	DipC, FS	Y
Bachelor of Construction Management (Honours)	414021	4	CE	OC	Y	Y	81.35	85.00			Y	AdvDip	CIV	DipC, FS	Y
Bachelor of Environmental Science	434921	3	ML	OC	Y	Y	61.20	70.00			Y	Dip	CIV	DipSE, FS	Y
Bachelor of Science	434201	3	ML	OC	Y	Y	62.25	70.00	#10	#4	Y	Dip	CIV	DipSE, FS	Y
<b>UniSA Online Programs</b>															
Bachelor of Business (Financial Planning)	AO <sup>1</sup>	3	UO	100% OL	Y	Y	n/a	n/a			Y	CIV	CIV	DipB, FS	Y
Bachelor of Business (Human Resource Management)	AO <sup>1</sup>	3	UO	100% OL	Y	Y	n/a	n/a			Y	CIV	CIV	DipB, FS	Y
Bachelor of Business (Management)	AO <sup>1</sup>	3	UO	100% OL	Y	Y	n/a	n/a			Y	CIV	CIV	DipB, FS	Y
Bachelor of Business (Marketing)	AO <sup>1</sup>	3	UO	100% OL	Y	Y	n/a	n/a			Y	CIV	CIV	DipB, FS	Y
Bachelor of Communication	AO <sup>1</sup>	3	UO	100% OL	Y	Y	n/a	n/a			Y	CIV	CIV	DipA, FS	Y
Bachelor of Community Health	AO <sup>1</sup>	3	UO	100% OL	Y	Y	n/a	n/a			Y	CIV	CIV	DipH, FS	Y
Bachelor of Construction Management	AO <sup>1</sup>	3	UO	100% OL	Y	Y	n/a	n/a			Y	CIV	CIV	DipC, FS	Y
Bachelor of Construction Management (Honours)	AO <sup>1</sup>	4	UO	100% OL	Y	Y	n/a	n/a			Y	CIV	CIV	DipC, FS	Y
Bachelor of Commerce (Accounting)	AO <sup>1</sup>	3	UO	100% OL	Y	Y	n/a	n/a			Y	CIV	CIV	DipB, FS	Y
Bachelor of Criminal Justice	AO <sup>1</sup>	3	UO	100% OL	Y	Y	n/a	n/a			Y	CIV	CIV	DipA, FS	Y
Bachelor of Digital Media	AO <sup>1</sup>	3	UO	100% OL	Y	Y	n/a	n/a			Y	CIV	CIV	DipA, FS	Y
Bachelor of Health Science (Nutrition and Exercise)	AO <sup>1</sup>	3	UO	100% OL	Y	Y	n/a	n/a			Y	CIV	CIV	DipH, FS	Y
Bachelor of Information Technology and Data Analytics	AO <sup>1</sup>	3	UO	100% OL	Y	Y	n/a	n/a			Y	CIV	CIV	DipIT, FS	Y
Bachelor of Marketing and Communication	AO <sup>1</sup>	3	UO	100% OL	Y	Y	n/a	n/a			Y	CIV	CIV	DipA, FS	Y
Bachelor of Public Health	AO <sup>1</sup>	3	UO	100% OL	Y	Y	n/a	n/a			Y	CIV	CIV	DipH, FS	Y
Bachelor of Psychological Science and Sociology	AO <sup>1</sup>	3	UO	100% OL	Y	Y	n/a	n/a			Y	CIV	CIV	DipA, FS	Y
<b>Whyalla and Mount Gambier Programs</b>															
Diploma in Health (Mount Gambier)	476001	2	MG	OC	Y	Y	51.20	50.00			Y	n/a	CIII, #6	n/a	Y
Bachelor of Social Work (Mount Gambier)	474041	4	MG	OC	Y	Y	61.05	70.00			Y	Dip	CIV	FS	Y
Bachelor of Social Work (Whyalla)	464081	4	W	OC	Y	Y	73.35	70.00			Y	Dip	CIV	FS	Y
Bachelor of Midwifery (Mount Gambier)	474081	3	MG	OC/OL	Y	N	89.45	n/a			Y	n/a	AdvDip	FS	Y

	SATAC code	Program length (years)	Home campus	Study mode <sup>+</sup>	Part-time study	Mid-year entry	Selection Rank (March 2019 cut off) <sup>10</sup>	Guaranteed Entry – Selection Rank	Prerequisite at Stage 2 (Minimum score C-)	Assumed Knowledge (Stage 2 unless stated)	Adjustment Factors <sup>4</sup> (Previously known as Bonus Points)	Guaranteed Entry – Selection Rank (VET)	Minimum VET Entry	UniSA College Pathways	STAT Entry
Bachelor of Nursing (Mount Gambier)	474031	3	MG	OC/OL	Y	N	65.05	70.00			Y	#9	Dip, #5	DipH, FS	Y
Bachelor of Nursing (Whyalla)	464071	3	W	OC/OL	Y	N	66.80	70.00			Y	#9	Dip, #5	DipH, FS	Y
Bachelor of Early Childhood Education (Honours) (Mount Gambier) <sup>2</sup>	474090	4	MG	OC/OL	Y	Y	87.55	80.00			Y	Dip	Dip	DipA, FS	Y
Bachelor of Early Childhood Education (Honours) (Whyalla) <sup>2</sup>	464170	4	W	OC/OL	Y	Y	71.35	80.00			Y	Dip	Dip	DipA, FS	Y
Bachelor of Primary Education (Honours) (Mount Gambier) <sup>2</sup>	474091	4	MG	OC/OL	Y	Y	70.90	80.00			Y	Dip	Dip	DipA, FS	Y
Bachelor of Primary Education (Honours) (Whyalla) <sup>2</sup>	464171	4	W	OC/OL	Y	Y	76.75	80.00			Y	Dip	Dip	DipA, FS	Y
<b>UniSA College Pathway Programs</b>															
Aboriginal Pathway Program	n/a	1	CW*	OC	Y	N	n/a	n/a			Y	n/a	#8	n/a	Y
UniSA Foundation Studies	427021	1	CW	OC	Y	Y	n/a	n/a			Y	n/a	#7	n/a	Y
UniSA Foundation Studies (Mount Gambier)	477011	1	MG	OC	Y	Y	n/a	n/a			Y	n/a	#7	n/a	Y
UniSA Foundation Studies (Whyalla)	467011	1	W	OC	Y	Y	n/a	n/a			Y	n/a	#7	n/a	Y
Diploma in Arts	426011	2	CW, M	OC	Y	Y	50.30	50.00			Y	n/a	CIII, #6	n/a	Y
Diploma in Business	426031	2	CW	OC	Y	Y	50.00	50.00			Y	n/a	CIII, #6	n/a	Y
Diploma in Engineering	426067	2	CW, ML	OC	Y	Y	50.00	50.00			Y	n/a	CIII, #6	n/a	Y
Diploma in Information Technology	426060	2	CW, ML	OC	Y	Y	50.00	50.00			Y	n/a	CIII, #6	n/a	Y
Diploma in Science and the Environment	426065	2	CW, ML	OC	Y	Y	50.00	50.00			Y	n/a	CIII, #6	n/a	Y
Diploma in Construction	426069	2	CW, ML	OC	Y	Y	50.00	50.00			Y	n/a	CIII, #6	n/a	Y
Diploma in Health	426041	2	CW, CE	OC	Y	Y	50.15	50.00			Y	n/a	CIII, #6	n/a	Y
Diploma in Arts/Bachelor of Arts	424621	4	CW, M	OC	Y	Y	51.70	50.00			Y	n/a	CIII, #6	n/a	Y
Diploma in Arts/Bachelor of Early Childhood Education (Honours)	426070	5	CW*	OC	Y	Y	NEW	50.00			Y	n/a	CIII, #6	n/a	Y
Diploma in Arts/Bachelor of Primary Education (Honours)	426071	5	CW*	OC	Y	Y	NEW	50.00			Y	n/a	CIII, #6	n/a	Y
Diploma in Business/Bachelor of Business	424631	4	CW	OC	Y	Y	51.50	50.00			Y	n/a	CIII, #6	n/a	Y
Diploma in Construction/Bachelor of Construction Management (Honours)	426072	5	CW, CE	OC	Y	Y	NEW	50.00			Y	n/a	CIII, #6	n/a	Y
Diploma in Engineering/Bachelor of Engineering (Honours) (Flexible Entry)	426068	5	CW, ML	OC	Y	Y	NEW	50.00			Y	n/a	CIII, #6	n/a	Y
Diploma in Health/Bachelor of Health Science (Public Health)	426051	4	CW, CE	OC	Y	Y	NEW	50.00			Y	n/a	CIII, #6	n/a	Y
Diploma in Health/Bachelor of Laboratory Medicine (Honours)	426066	5	CW, CE	OC	Y	Y	NEW	50.00			Y	n/a	CIII, #6	n/a	Y
Diploma in Health/Bachelor of Nutrition and Food Sciences	426063	4	CW, CE	OC	Y	Y	NEW	50.00			Y	n/a	CIII, #6	n/a	Y
Diploma in Information Technology/Bachelor of Information Technology	426061	4	CW, ML	OC	Y	Y	NEW	50.00			Y	n/a	CIII, #6	n/a	Y
Diploma in Science and the Environment/Bachelor of Environmental Science	426062	4	CW, ML	OC	Y	Y	NEW	50.00			Y	n/a	CIII, #6	n/a	Y
Diploma in Science and the Environment/Bachelor of Science	426064	4	CW, ML	OC	Y	Y	NEW	50.00			Y	n/a	CIII, #6	n/a	Y
UniSA Foundation Studies/Bachelor of Aviation (Management)**	427041	4	CW, ML	OC	Y	Y	NEW	n/a			Y	n/a	#7	n/a	Y
UniSA Foundation Studies/Bachelor of Aviation (Pilot)**	427031	4	CW, ML	OC	Y	Y	NEW	n/a			Y	n/a	#7	n/a	Y

## KEY

### Campus codes

CE	City East	MG	Mount Gambier
CW	City West	W	Whyalla
ML	Mawson Lakes	UO	UniSA Online
M	Magill		

### International Baccalaureate/ Interstate equivalents

#### Mathematical Methods:

**IB:** Mathematics: Applications and Interpretations HL (min grade 3) or Mathematics: Analysis and Approaches SL (Min grade 4); **VIC:** Mathematical Methods (Major); **ACT:** Mathematical Methods, Specialist Mathematics (Major–Minor); **NSW:** Mathematics Extensions 1, Mathematics; **QLD:** Mathematics B; **TAS:** Mathematics Methods, Mathematics I & Mathematics II (Major–Minor); **WA:** Mathematics Methods ATAR.

#### Specialist Mathematics:

**IB:** Mathematics: Analysis and Approaches HL (Min grade 3); **VIC:** Specialist Mathematics; **ACT:** Specialist Mathematics (Double Major); **NSW:** Mathematics Extension 2; **QLD:** Mathematics C; **TAS:** Mathematics Specialised; **WA:** Specialist Mathematics (ATAR).

### UniSA pathway codes

MSC	UniSA Maths Short Course
FS	Foundation Studies
DipA	Diploma in Arts
DipB	Diploma in Business
DipC	Diploma in Construction
DipE	Diploma in Engineering
DipSE	Diploma in Science and the Environment
DipH	Diploma in Health
DipIT	Diploma in Information Technology

## Symbol codes

1	This program is designed to be studied concurrently with any UniSA bachelor degree.
2	Additional non-academic entry criteria applies.
AO	Apply directly at <a href="http://unisa.edu.au/applyonline">unisa.edu.au/applyonline</a>
AO <sup>1</sup>	Apply directly at <a href="http://unisaonline.edu.au">unisaonline.edu.au</a>
CIII	Certificate III or higher award.
CIV	Certificate IV or higher award.
Dip	Diploma or higher award.
AdvDip	Advanced diploma or higher award.
NB	The Final Semester 1 Selection Rank scores displayed are for entry into UniSA programs in 2019. Selection Rank scores vary yearly and should be used as a guide only.
Δ	Eligibility criteria applies, visit <a href="http://unisa.edu.au/adjustmentfactors">unisa.edu.au/adjustmentfactors</a>
n/a	Does not apply to this program.
~	Some courses will be delivered at Magill Campus depending on your chosen industry-major.
+	For more information about study modes, visit <a href="http://unisa.edu.au/study">unisa.edu.au/study</a>
OC	Students will complete their studies on campus.
OC/OL	Students may complete their studies through a blend of on-campus and online study. Some degrees are also offered online, however students may be required to attend on-campus workshops and assessments.
OL	Students complete their studies online and are not required on-campus.
100% OL	Students will complete their studies through UniSA Online. No on-campus attendance is required.
#	Also available through external (online) delivery.
^	Also available at Mount Gambier and Whyalla.
*	Also available at Mount Gambier.
«	Also available in Ceduna, Mount Gambier, Port Lincoln and Whyalla.
»	Also available through Open Universities Australia (OUA).
**	The GPA requirements to transfer from UniSA Foundation Studies to the bachelor program will be monitored and enforced by the Transition Officer.
□	The Bachelor of Early Childhood Education (Honours) and Primary Education (Honours) is available at Magill, Mawson Lakes, Mount Gambier and Whyalla campuses.
▼	Students choose two Learning Areas from Arts; Catholic Studies; English; Humanities and Social Sciences; Languages; Mathematics; Science; and Technologies.

## Notes

- #1 SACE Stage 2 Mathematical Methods
- #2 SACE Stage 2 Physics
- #3 SACE Stage 2 Biology; or SACE Stage 2 Chemistry; or SACE Stage 2 Physics.
- #4 Refer to program schedule and notes at [unisa.edu.au/science](http://unisa.edu.au/science)
- #5 Certificate IV in Nursing when accompanied with a current Nurse Practising Certificate.
- #6 Applicants who have completed a VET award at diploma level or who have studied at a higher education level for more than two years will not be considered for admission.
- #7 No formal minimum entry requirements apply. However, applicants who have not completed SACE or a Certificate III must be 18 years of age or over before:
  - February 1st for Study Period 2; or
  - July 1st for Study Period 5 (mid-year)
- #8 No formal minimum requirements apply. Applicants must identify as being of Aboriginal or Torres Strait Islander descent.
- #9 Enrolled Nurse Certificate or Diploma in Nursing – both with current Practising Certificate.
- #10 Minimum grade of C- or higher in at least two of the following SACE Stage 2 subjects: Biology; Chemistry; Earth and Environmental Science; Mathematical Methods; Specialist Mathematics; or Physics.
- #11 SACE Stage 2 Biology and SACE Stage 2 Physics.
- #12 Refer to program schedule and notes at [unisa.edu.au/education](http://unisa.edu.au/education)
- #13 SACE Stage 1 Mathematics

**Combined degrees:** A range of programs within the university are approved for combined study. You can apply for your second degree once you have successfully completed at least four courses in your initial degree.



**University of  
South Australia**

[unisa.edu.au](http://unisa.edu.au)

Telephone: (08) 8302 2376

Make an enquiry: [unisa.edu.au/enquire](http://unisa.edu.au/enquire)



[youtube.com/unisouthaustralia](https://youtube.com/unisouthaustralia)



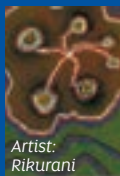
[facebook.com/UniSA](https://facebook.com/UniSA)



[twitter.com/UniversitySA](https://twitter.com/UniversitySA)



[instagram.com/universitysa](https://instagram.com/universitysa)



Artist:  
Rikurani

### **Acknowledgement of Country**

UniSA respects the Kaurna, Boandik and Barngarla peoples' spiritual relationship with their country. We also acknowledge the diversity of Aboriginal peoples, past and present.

Find out more about the University's commitment to reconciliation at [unisa.edu.au/RAP](http://unisa.edu.au/RAP)

The information provided in this publication is for general information only, and the University of South Australia makes no representation about the content, suitability, accuracy or completeness of this information for any purpose. It is provided "as is" without express or implied warranty.

Information correct at time of printing (July 2019)

CRICOS provider number 00121B

For information specific to international students, please visit [unisa.edu.au/international](http://unisa.edu.au/international)

**Australia's University of Enterprise**