



University of  
South Australia

# 2019 STUDY AND CAREER GUIDE

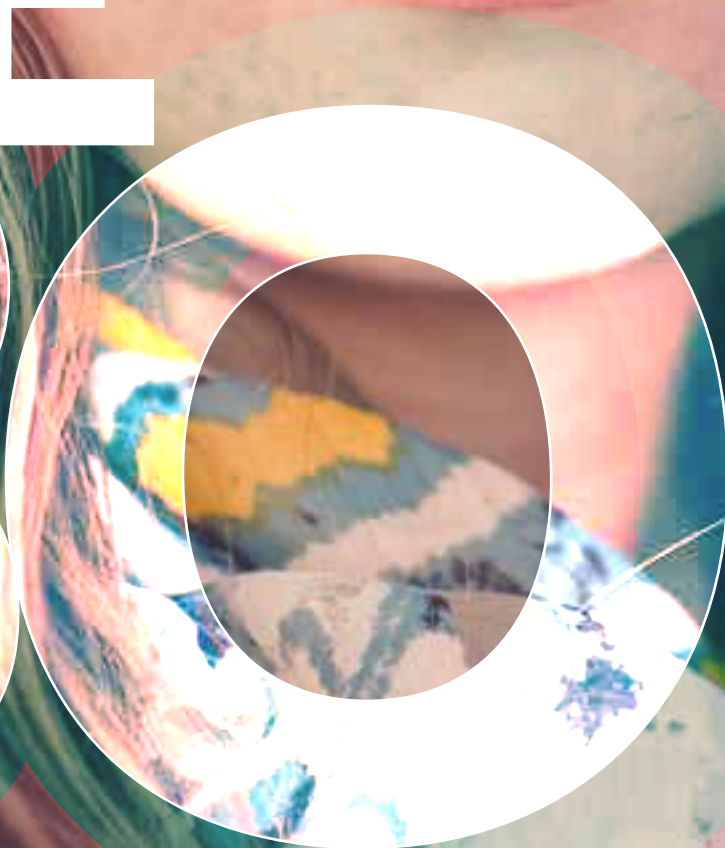




BE

D

D





# STUDY WITH THE BEST

**No.1 IN SA**  
FOR STUDENT SATISFACTION

QILT: Undergraduate Course Experience Questionnaire  
2016–17. Public SA-founded universities only.

**SA's #1**  
**UNIVERSITY**  
**FOR GRADUATE**  
**CAREERS**

QILT: Graduate Destinations Survey 2015 and Graduate Outcomes Survey 2016–17  
– Full-time Employment Indicator. Public SA-founded universities only.

To be the best in your field, you  
need a university that offers a  
choice of over 200 world-class  
degrees, and is globally  
recognised for its teaching,  
research and facilities.

GET THE CAREER YOU WANT / 2

AUSTRALIA'S UNIVERSITY OF  
ENTERPRISE / 4

YOUR STUDY EXPERIENCE / 6

YOUR CAMPUSES / 10

NEW SPACES / 14

GETTING TO CAMPUS / 18

STUDENT LIFE / 20

YOUR WELLBEING AND  
SUPPORT / 24

PATHWAYS INTO UniSA / 26

STUDY ONLINE / 30

YOUR NEXT STEPS / 32

# GET THE CAREER YOU WANT

## World-class degrees

UniSA offers over 200 world-class degrees across a wide range of discipline areas. Some undergraduate degrees are also unique just to UniSA including Aviation, Construction Management, Journalism, Pharmacy, Podiatry, Interior Architecture, Property, Occupational Therapy and Physiotherapy.

## Practical learning

Learn in a highly practical environment. Complete an internship or placement during your studies, learning from experts in a real-world setting. Build your networks and graduate career-ready with the skills required of tomorrow's professionals.

## Top ranking teachers

Make your study experience relevant and learn from highly qualified academics and industry professionals. UniSA is Australia's best young university for teaching quality.\*

*\*2018 THE Young University Rankings*

## Industry connected

Our learning is influenced by industry, and the latest trends and demands. We collaborate with over 2,500 companies worldwide to bring our students placement, project, research and work opportunities.

## CAREER SERVICES

Career planning is one of the most important aspects of university life. We have a dedicated Career Services team ready to support you in achieving your career goals. They offer an extensive range of services, resources and tools to help you plan your career, prepare for the workplace, connect to industry and most importantly, find a job in your chosen field.

[unisa.edu.au/careers](http://unisa.edu.au/careers)

## GLOBAL OPPORTUNITIES

Take part in international field trips, work placements, internships, study tours, short-term programs, volunteer opportunities, conferences or a student exchange during your studies. We encourage all students to study or take up an opportunity overseas to get a global perspective and competitive edge before they graduate.

[unisa.edu.au/globalopportunities](http://unisa.edu.au/globalopportunities)



Explore your study options at [unisa.edu.au/study](http://unisa.edu.au/study)



200+  
WORLD-CLASS  
DEGREES

COLLABORATING  
WITH OVER 2500  
COMPANIES  
WORLDWIDE

87 STUDY  
EXCHANGE  
PARTNERS IN  
MORE THAN 24  
COUNTRIES

## Taking a bite out of the Big Apple



Elliott Burford has achieved remarkable success as a designer and art director since graduating from UniSA. He has designed key experiences for global brands such as Nike+, Samsung, Tiffany & Co and YouTube.

Living in New York City, Elliott is now a Creative Lead for Google.

"Each day means working alongside an incredibly talented team. It's a wonderfully challenging and surprising environment. You're inspired to do your best work because there are so few limitations to what is possible.

"My advice to young graduates is to dream big, go exploring, make stuff, share what you discover, rinse and repeat."

Elliott Burford

**CREATIVE LEAD, DESIGN /  
GOOGLE CREATIVE LAB**

*The Google Creative Lab is a small team of designers, writers, programmers, filmmakers, producers and business thinkers whose mission is to make Google's magic more magical and to help invent its future.*



---

# AUSTRALIA'S UNIVERSITY OF ENTERPRISE

---

*The award-winning Jeffrey Smart  
Building at City West Campus.*



Artist:  
Rikurani

## **Acknowledgement of Country**

UniSA respects the Kurna, Boandik and Barngarla peoples' spiritual relationship with their country. We also acknowledge the diversity of Aboriginal peoples, past and present.

Find out more about the University's commitment to reconciliation at [unisa.edu.au/RAP](http://unisa.edu.au/RAP)





UniSA is ranked in the top 10 universities in Australia and amongst the best young universities in the world.

Our teaching is industry-informed and our degrees are aligned with the latest industry trends and demands. You will learn from top ranking teachers and work on real-world issues to ensure you are career ready.

We have invested in a range of new buildings and facilities totalling over \$400 million to enhance our campus blueprint. This includes the \$50 million Pridham Hall featuring a new graduation and sporting space, along with the \$247 million UniSA Cancer Research Institute on North Terrace.

We are also actively involved with the community, contributing to the intellectual, cultural and sporting life of South Australia. Key initiatives include our new futuristic museum of discovery – MOD. – the SAMSTAG Museum of Art and Hawke Centre based at City West Campus; and sponsorship of the Adelaide Crows Football Club and Santos Tour Down Under.

We are a young and confident university, boldly taking on the needs of a changing world. We are focused on the next generation of great minds and invite you to come and study with the best.

## TOP 10 IN AUSTRALIA

Ranked 9th,  
2018 THE World  
University Rankings

## RANKED 25th IN THE WORLD'S TOP 50 UNDER 50

2019 QS Top 50  
Universities Aged  
Under 50

## #1 YOUNG UNIVERSITY IN AUSTRALIA FOR TEACHING QUALITY

2018 THE Young  
University Rankings



*"UniSA is a globally connected and engaged university helping to solve the problems of industry and the professions. Our graduates are the new professionals, global citizens at ease with the world and ready to create and respond to change. We are Australia's University of Enterprise."*

Prof. David Lloyd | VICE CHANCELLOR AND PRESIDENT

# YOUR STUDY EXPERIENCE

## GET CAREER READY

### Your learning

We are focused on life beyond the classroom – that's why we have SA's best graduate career outcomes. You will learn from highly-experienced academics and professionals who are leaders in their field. You will also connect with industry, work on real issues and gain practical experience through:

- ✓ *Internships and placements*
- ✓ *Industry masterclasses, clinics and networking events*
- ✓ *National and international study tours, exchange programs, competitions and exhibitions*
- ✓ *Volunteering and community projects*

### Your study options

Find the degree that's right for you. What are you most interested in? What career do you want? It's important to narrow down your choices and preference the degrees that are a good fit for you.

### Checklist

Does this degree match my career goal?

Do I like the courses in this degree?

Why does this degree interest me?

What will my study schedule look like?

Will I meet the entry requirements?

### Double degrees

Graduate with a competitive advantage by combining two fields of study. Popular combinations include Law and Journalism, Psychological Science and Human Resource Management, Exercise and Sport Science with Nutrition, and Human Movement with Education.

## FLEXIBLE AND ONLINE STUDY

Take advantage of our flexible study options, including online, part-time, blended and accelerated learning. Tailor your degree so you have time to travel, work and study from any location. We also offer 100% online degrees through UniSA Online. Study on Demand through an online interactive learning environment anywhere, any time and on any device. For more information see pages 30–31.

## STUDENT APP

This mobile app allows all UniSA students to view their timetable, check emails, get important notifications, track assessments and see course enrolments and details. You can also find available PCs on campus, book a study room, check your print quota and library loans, and view announcements.



[unisa.edu.au/studentapp](http://unisa.edu.au/studentapp)

## UniSA+

Stand out as an exceptional graduate by building a portfolio of co-curricular activities while you study through the UniSA+ Award Program. Participate in a range of leadership, entrepreneurial, volunteering and self-development activities designed to give you the skills that employers are looking for. Upon completion, you will get an official record of your activities and a signed certificate from the Vice Chancellor.

[unisa.edu.au/unisaplus](http://unisa.edu.au/unisaplus)

## UniSA LEADERSHIP PROGRAM

Graduate with the qualities needed to thrive in our globally competitive economy. The UniSA Leadership Program offers workshops throughout the year, designed to offer insights into different leadership styles and developing strong leadership skills, such as emotional intelligence, conflict resolution, effective communication, personal branding, goal setting and more.

[unisa.edu.au/leadership](http://unisa.edu.au/leadership)



**"It's a big positive that students get exposed to working in the field and with industry throughout their degree. Our approach is to provide students with as many opportunities as possible to learn in a hands-on way. Connecting what we teach to real-world issues is really important – we want our graduates to be confident problem-solvers who are fully prepared for their professional careers."**

**Associate Professor Tom Raimondo**

Program Director: Environmental Science / School of Natural and Built Environment

Named in the Top 5 Researchers Under 40 by ABC Radio National and UNSW, and recipient of a 2016 Young Tall Poppy Science Award.





# Internships and placements



**“UniSA has given me the opportunity to learn from industry-experienced staff and complete a placement at the Adelaide Football Club. I have used software vision and statistics to present coaches with insight into player performance. I now have experience in Match-Day Analysis, GPS monitoring, Strength Programming and Data Collection at the various levels of AFL, SANFL and AFLW.”**

**Jordan Stellar / Bachelor of Human Movement**



**RISING SUN PICTURES**

**“My studies prepared me for my role at Rising Sun Pictures, not just by teaching me practical and artistic skills, but more importantly, how to apply these in a professional environment.**

**The most exciting part of my time in visual effects so far is definitely seeing the first shot I've ever worked on in a trailer at the cinema.”**

**Francesca Milde / Graduate Certificate in Compositing and Tracking**



**DXC.technology**

**“During my degree I have been working at DXC Technology through a paid internship, putting the skills I have learnt to use in a production and corporate environment. I have also visited DXC Datacentres in India to understand the organisation's processes and infrastructure. In the future, I would like to work in cybersecurity, as I am genuinely interested in how it affects various countries and industries.”**

**Nikil Kathiravan / Bachelor of IT (Honours) (Enterprise Business Solutions)**

## STUDY ABROAD

Experience the world and add an international perspective to your degree by traveling overseas during your studies. We offer a range of international opportunities including student exchange, study tours, internships, volunteering programs, and more. We offer programs in a wide range of countries, including Canada, France, Germany, the Netherlands, Hong Kong, Japan, South Korea, Mexico, the United Kingdom and the United States.

Find out more at  
[unisa.edu.au/globalopportunities](https://unisa.edu.au/globalopportunities)

*Students from the UniSA Business School on a volunteering placement at the Pyeong Chang Winter Olympics, learning about tourism and marketing.*







## VOLUNTEER YOUR TIME

Are you passionate about a particular cause? We can help you connect with an organisation and become a volunteer during your time at university. It's a great way to give back to the community, gain valuable life experience and add extra value to your resume.

Learn more at  
[unisa.edu.au/volunteering](http://unisa.edu.au/volunteering)

## UNISA STUDENTS COMPLETED UP TO 70,000 PLACEMENT DAYS ACROSS 550 ORGANISATIONS

2017 figures

## TAKE UP A TRAVEL SCHOLARSHIP

Study in the Indo-Pacific region through the Australian Government's New Colombo Plan (NCP) Scholarship Program. There are over 40 host locations including Nepal, Maldives, Singapore, Tonga, Vietnam, Malaysia, and more. The scholarship includes 1–2 semesters of study, language training plus an internship or mentorship for up to six months, with a value of up to A\$67,000. You can also get credit towards your degree!

Learn more at  
[unisa.edu.au/ncp](http://unisa.edu.au/ncp)



## WRITE FOR AUSTRALIA'S BEST STUDENT PUBLICATION\* – VERSE MAGAZINE

\*2017 Tag Campuslink Awards



**"I heard about the NCP in first year when I wasn't sure about my degree, career or life direction. I took a chance, and was selected as the first NCP Scholar in South Korea and it absolutely changed my life."**

**Michelle Howie**

---

# YOUR CAMPUSES

---

Study in modern, purpose-built facilities across all six UniSA campuses. Learn with the latest industry-standard tools and technologies that will take you from the classroom into the workplace.

*Jeffrey Smart Building*



*City West Campus*



*City East Campus*



*Anatomy Lab*



Take a virtual campus tour at [unisa.edu.au/campus-facilities](https://unisa.edu.au/campus-facilities)



# City

## CITY WEST

City West Campus is located on the western edge of the CBD. The West End is becoming an arts, food and cultural hub, and is home to exciting new infrastructure developments. This campus features state-of-the-art facilities including the multi-award winning Jeffrey Smart Building and the newly-opened Pridham Hall – home to a flexible event and graduation space, public sports complex and swimming pool.

### *What you'll study*

---

Art, Architecture and Design

---

Business

---

Finance

---

Law

---

Marketing

---

### *On campus*

IRESS Trading Room / [Law Clinic](#) / Mock court / [Marketing Clinic](#) / Architecture studios and workshop / [Visual art and design studios](#) / Photography darkroom / [Post office](#) / Food vendors / [Jeffrey Smart Building](#) / Student Lounge / [SASA Gallery](#) / Architecture Museum / [Samstag Museum](#) / Pridham Hall / [UniSA Health and Medical Clinic](#) / [UniSA Cancer Research Institute](#) / MOD.

## CITY EAST

City East Campus boasts impressive educational facilities and is located in a vibrant city setting near some of the best venues, eateries and shopping. Students studying a degree within the health and medical sciences will be based here and have access to a range of purpose-built laboratories and interactive learning spaces, such as the Horizon Hospital and Health Service.

### *What you'll study*

---

Construction Management

---

Human Movement

---

Medical and Radiation Sciences

---

Nursing and Midwifery

---

Nutrition and Food Sciences

---

Pharmacy

---

Physiotherapy

---

Podiatry

---

### *On campus*

Replica hospital and community health settings / [Anatomy Lab](#) / [Pharmacy Lab](#) / [Histopathology and Haematology Lab](#) / [Microbiology Lab](#) / [Biomechanics Lab](#) / [Sensory Lab](#) / [Exercise Physiology Lab](#) / X-Ray suites / [Virtual Environment Radiation Training Suite \(VERT\)](#) / [Built Environment Experiential Learning Suite](#) / [Commercial kitchen](#) / [Environmental Chamber](#) / [Community health clinics](#) / [Gym](#) / [Food vendors and outdoor plaza](#) / [Student lounges](#)

## ADELAIDE'S WEST END

RANKED AS ONE OF



INVESTED OVER  
\$400 MILLION IN

## NEW CAMPUS FACILITIES

### **Community clinics**

UniSA has multiple community clinics open to the public, which are also practical learning spaces for students. Our clinics cover areas such as marketing, law, dietetics, exercise physiology, health and medical services, mammography, midwifery, physiotherapy, podiatry and psychology.

[unisa.edu.au/community-clinics](http://unisa.edu.au/community-clinics)

# Suburban

## MAGILL

Magill Campus is nestled near the foothills in the leafy eastern suburbs. There are lush gardens and open outdoor spaces coupled with industry-standard learning facilities such as television and radio studios, social work studios, laboratories and a performing arts theatre.

### *What you'll study*

---

Arts

---

Communication and Journalism

---

Early Childhood and Primary Education

---

Media Arts

---

Psychology

---

Social Work

---

### *On campus*

TV Studio / [Sound Studio](#) / Radio Studio / [Journalism newsroom](#) / Editing suites / [Theatre](#) / Language Lab / [Social Work Studio](#) / Cognitive and Systems Neuroscience Laboratory / [Sleep and Chronobiology Laboratory](#) / Psychology Clinic / [Samsung SMARTSchool](#) / Allied Health Clinic / [Gym and indoor sports centre](#) / Outdoor sports field / [Swimming pool](#) / Food vendors / [Parklands](#) and lawn areas

## MAWSON LAKES

Mawson Lakes Campus is located near more than 100 high-technology companies that make up Technology Park – an innovation hub in Adelaide's northern suburbs. This campus is home to SA's largest IT School and features state-of-the-art learning spaces for engineering, science, technology and design.

### *What you'll study*

---

Aviation

---

Early Childhood and Primary Education

---

Engineering

---

Information Technology

---

Secondary Education

---

Science and Mathematics

---

### *On campus*

Industry-standard engineering facilities / [Specialist IT facilities](#) / Mac and CISCO networking labs / [Materials and Minerals Science Learning and Research Hub](#) / Future Industries Institute / [Planetarium](#) / Flight and airport simulators / [UniSA Aviation Hangar \(located near campus\)](#) / Ecological precinct / [Drama centre](#) / Food vendors and outdoor dining areas / [Sports centre and gym](#)



Take a virtual campus tour at [unisa.edu.au/campus-facilities](https://unisa.edu.au/campus-facilities)







TV Studio



Mawson Lakes Campus



Mechatronics Lab



# Regional

## WHYALLA

This is SA's largest regional university campus. Situated on a 22-hectare site, the Whyalla Campus features purpose-built learning spaces including health laboratories and simulated classrooms for education students. There is also on-site accommodation in the Student Village.

## MOUNT GAMBIER

The Mount Gambier Campus is home to modern facilities including the impressive \$12.5 million Learning Centre, which has simulated learning environments for nursing and midwifery students, social work studios, a technology-driven gallery space, cutting-edge IT infrastructure, and a range of social and informal study spaces.

### What you'll study

Early Childhood Education

Midwifery<sup>^</sup>

Music<sup>\*</sup>

Nursing

Primary Education

Social Work

UniSA College:

- Foundation Studies
- Aboriginal Pathway Program
- Diploma in Health<sup>#</sup>

<sup>^</sup>Study core courses online and complete intensive clinical workshops on campus. Only available in Mount Gambier.

<sup>\*</sup>Only available in Mount Gambier and delivered through the James Morrison Academy of Music.

<sup>#</sup>Only available in Mount Gambier.



# NEW SPACES

## PRIDHAM HALL

This new \$50 million space has transformed our City West Campus; featuring a sports centre, swimming pool, gym, rock climbing wall, dance/aerobics studio, function rooms, and facilities to seat students and their families for graduation ceremonies.







7400m<sup>2</sup>

TOTAL FLOOR AREA

25m

SWIMMING POOL

15+

SPORT ACTIVATIONS

1800

SEATS

2931

PLANTS

640

SOLAR PANELS



Take a virtual fly-through at [unisa.edu.au/campuspridhamhall](https://unisa.edu.au/campuspridhamhall)











MOD.

## UniSA CANCER RESEARCH INSTITUTE

Located in the Adelaide BioMed City on North Terrace, this 14-storey, \$247 million building is the new leading destination for health research and teaching. It is home to one of the most significant concentrations of cancer researchers in the state, and features the latest tools and technologies to support improvements in patient diagnostics and treatments.

See this world-class project at [unisa.edu.au/facilities/unisaCRI](http://unisa.edu.au/facilities/unisaCRI)

## MOD.

This futuristic museum of discovery offers immersive experiences to the public through dynamic and changing exhibition programs across six gallery and two studio spaces. From new ways of understanding the stars and planets, to spaces where you can dance with an interactive algorithm or test out how the brain tricks you into feeling pain, the museum will challenge all of your senses and many of your ideas about what makes us human.

Discover more at [unisa.edu.au/MOD](http://unisa.edu.au/MOD)

## Samsung SMARTSchool

The first of its kind in Australia and powered by leading edge Samsung technology, this high-tech training facility supports new approaches to teaching students from reception to secondary school. Based at Magill Campus, this new space features visual display technology, smartphones, tablets, wearables and virtual reality headsets.

Learn more at [unisa.edu.au/smartschool](http://unisa.edu.au/smartschool)



Samsung  
SMARTSchool

### Welcome to Industry 4.0

UniSA students in disciplines such as information technology and engineering now have access to the latest software utilised for designing and validating advanced space gear, supercars and warships through a new \$450 million grant from tech giant Siemens. Design with the same software used to develop everything from Space X, the Mars Curiosity Rover, Maserati Ghibli and digital shipbuilding. Graduate with the skills needed for the fourth industrial revolution, or Industry 4.0, by exploring the current trends of improved automation, machine-to-machine communication, machine learning, artificial intelligence and continued digitisation of manufacturing.

**SIEMENS**

# GETTING TO CAMPUS







What campus(es) will I be at?

What is my best travel option?

## PUBLIC TRANSPORT

You will find bus stops near each campus and train stations close to the city and Mawson Lakes campuses. Check your bus, train or tram options on the Adelaide Metro website. You will also be entitled to student discounts on tickets once you have enrolled.

[adelaidemetro.com.au](http://adelaidemetro.com.au)

## CAR PARKING

The Magill and Mawson Lakes campuses have on-site car parking available for students. Tickets are purchased through the UniSA Parki app available through the App Store or Google Play. Alternatively, you can buy tickets from easily located metered parking machines on campus. Car parking will cost you from \$0.20 an hour to \$1.50 for a full day (8:00am–6:00pm). For city campuses, there is metered on-road and commercial car parking nearby, with costs starting at \$4.00 an hour to \$15.00 a day for early birds.

## MOTORCYCLE PARKING

You will find motorcycle parking on university grounds at City East, Magill and Mawson Lakes campuses, accessible with the display of a UniSA parking permit. At City West, motorcycles can be parked in designated council parking bays.

## CAMPUS CONNECTOR

We run a free bus service between the Magill and Mawson Lakes campuses to make travelling easier for students who need to make the journey or live in surrounding suburbs. Go online for full timetable and route details.

[unisa.edu.au/campusconnector](http://unisa.edu.au/campusconnector)

## ACCESS PARKING

Access parking for people with a disability is available with a parking permit on every campus. Council parking bays are also available.

## RIDE YOUR BIKE

Cycling is a great way to get to campus. It's fun, inexpensive, good for the environment, and an excellent form of exercise. Each campus has shower facilities and secure bicycle storage areas. You can also hire an *Adelaide Free Bike* from the Security Office at City East and City West campuses to get around during daylight hours.

# STUDENT LIFE

Enjoy an energetic student experience brought to life by events, entertainment, sports, clubs, overseas travel and more. Get involved with life on campus and build lasting friendships along the way.



## ORIENTATION

Kick-off your university adventure by attending O-Week. Meet your lecturers, connect with new people, and gain valuable insights from current students.

Enjoy a free lunch and activities, explore your home campus and get ready for your first day at university.

[unisa.edu.au/orientation](https://unisa.edu.au/orientation)



## UNISA SPORT

Get involved with UniSA Sport and join one of our 25+ sporting clubs including rowing, basketball, volleyball, netball, football, gridiron, rock climbing, and more. Gain access to the new \$50 million Pridham Hall with a fully-equipped space for training and competitions. You can also sign-up for a range of sports tournaments from social to national level, keep active in our on-campus fitness centres, and participate in community events.

[unisa.edu.au/unisasport](https://unisa.edu.au/unisasport)



## STUDENT CLUBS

Discover the 100+ academic, cultural and social clubs available at UniSA. From dance, to yoga, climate change, gaming and Harry Potter appreciation – there is something for everyone! It's a great way to meet new friends, find common interests with fellow students and build a more vibrant university experience.

[unisa.edu.au/clubs](https://unisa.edu.au/clubs)

## EVENTS AND ENTERTAINMENT

All sorts of great events take place throughout the year on all UniSA campuses.

From career expos to campus fairs, volunteering expos, Unitopia (celebrating relaxation and wellbeing) to Multicultural Week – there is always something to do.

We also have regular exhibitions at the Samstag Museum of Art (located at City West Campus) and thought-provoking presentations from notable guest speakers at the Hawke Lecture Series.



University of South Australia  
Student Association

USASA are a non-profit student-owned organisation focused on providing key services and a voice for students at UniSA. USASA coordinates student advocacy, clubs, second-hand book sales, social events, production of the student magazine, campus counters, and free goodies and giveaways.

[unisa.edu.au/USASA](https://unisa.edu.au/USASA)

Follow us on social



[youtube.com/unisouthaustralia](https://youtube.com/unisouthaustralia)

[facebook.com/UniSA](https://facebook.com/UniSA)

[twitter.com/UniversitySA](https://twitter.com/UniversitySA)

[instagram.com/universitysa](https://instagram.com/universitysa)

### Campus wear

UniSA branded clothing is available for purchase online or on campus, including t-shirts, hoodies, vests and jackets.

Check out

[unisa.edu.au/campuswear](https://unisa.edu.au/campuswear)

### Student newsletter

All UniSA students receive a fortnightly e-newsletter to keep up to date with what's happening on campus and in the student community. You will get the latest information about events, career and volunteering opportunities, stories from around the University, and so much more.

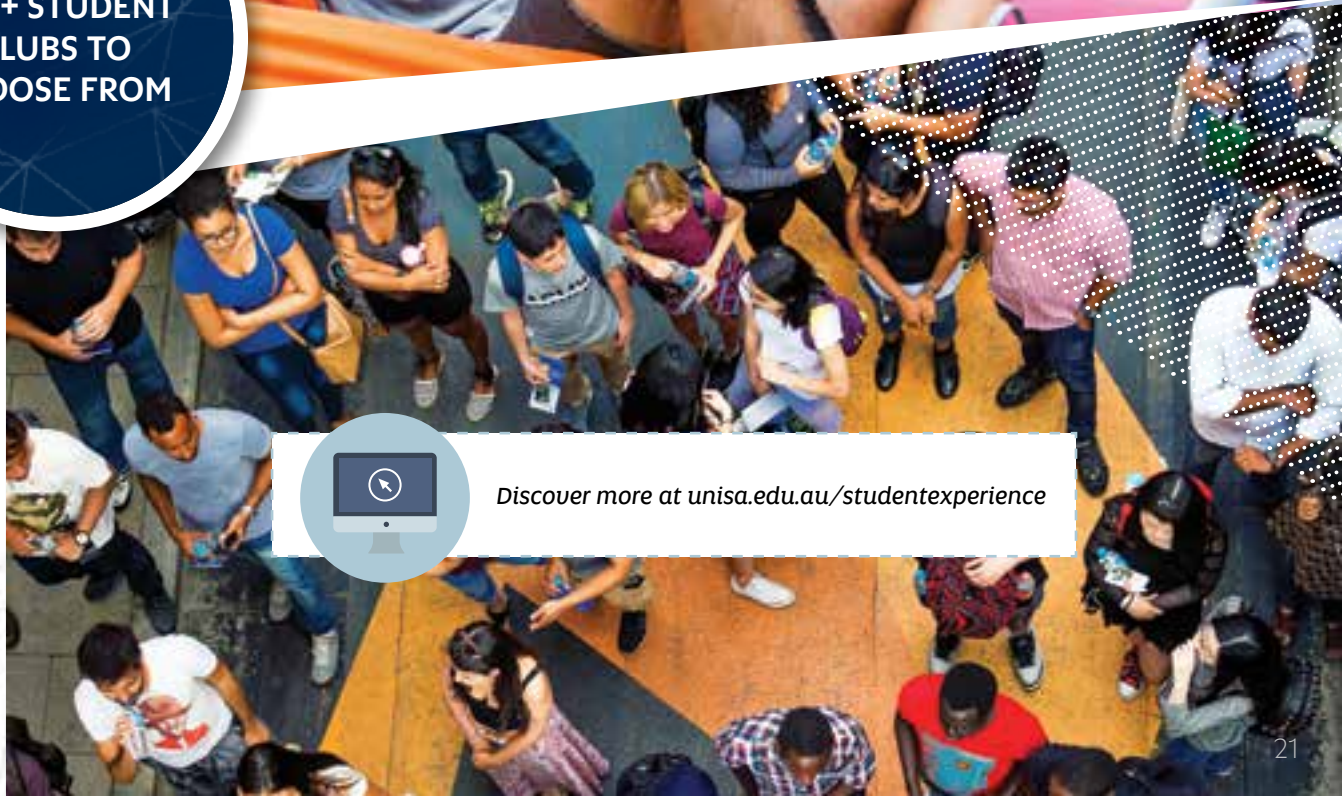




50+ EVENTS  
ACROSS UnISA  
EVERY YEAR



100+ STUDENT  
CLUBS TO  
CHOOSE FROM



Discover more at [unisa.edu.au/studentexperience](https://unisa.edu.au/studentexperience)





Flight  
simulator



New food  
vendors





## Student lounge @ City West



**Flight simulator** / A new \$250,000 flight simulator replicating the Boeing 737NG aircraft located at Mawson Lakes Campus, equipped with the latest technologies to simulate flying conditions for aviation students.

**Student lounge** / Designed by our students, this is a place to come together outside of study time, featuring different social spaces, mobile phone chargers, student lockers, gaming stations, table tennis and pool tables, and a fully-equipped kitchen, located at City West Campus.

**New food vendors** / Local food vendors are now serving up great food options on campus. Some of the operators include Abbots and Kinney, Honki Tonki, Food Lore, A Pot Called Kettle, Mr Wuhu, Phat Buddha Rolls, Since I Met Harry, Brightside Deli, Frankie's Diner and Zambrero.

**Health Horizon Hospital Service** / A state-of-the-art facility located at City East Campus, providing practical learning opportunities for nursing and midwifery students through simulated experiential activities.



## Health Horizon Hospital Service

**Visit your local Campus Central** for help with enrolment, ID cards, fees, timetables and any other questions you have. Open weekdays 8:30am–6:00pm.

**Our Ask the Library service** operates from 8:30am until midnight on week days and between 10:00am–6:00pm on weekends.

**Access the UniSA IT Help Desk** 24 hours a day, 7 days a week.

---

# YOUR WELLBEING & SUPPORT

---

## **Student support services**

*Your health and wellbeing is important, so we provide a full range of integrated services to help support you during your studies, including:*

Study support / [Personal counselling](#) / Access and inclusion services / [Aboriginal and Torres Strait Islander student services](#) / Career services / [International student services](#) / [Regional student services](#) / [Online study support](#) / Peer mentoring / [Student equity and diversity](#) / [Accommodation](#) / [Community health clinics](#) / [Health and fitness centres](#) / [Legal Advice Clinic](#)

[unisa.edu.au/studentservices](https://unisa.edu.au/studentservices)

## **SCHOLARSHIPS**

Each year more than 2,500 students from all walks of life benefit from UniSA scholarships and grants worth millions of dollars. Not only do they provide financial assistance, but they also often include valuable work experience, mentoring opportunities and even overseas travel. Go online and use our scholarships search engine to see what you might be eligible for.

[unisa.edu.au/scholarships](https://unisa.edu.au/scholarships)

## **PARENT RESOURCES**

There are specific resources available for parents and families so they can also assist you in your transition to university life.

[unisa.edu.au/parents](https://unisa.edu.au/parents)





## SAFEZONE APP

All UniSA students can download the free *SafeZone* app, providing additional security and support when studying on campus. The app allows you to get help quickly in a personal emergency or if someone else needs first aid or general assistance. You can check-in when working alone, after hours or in high risk areas, which shares your status with an on-site response team. You can also receive notifications so you know what to do in an emergency situation. The app is available for download through the App Store or Google Play.



[unisa.edu.au/safezone](https://unisa.edu.au/safezone)

## ACCOMMODATION

There are a variety of student accommodation options including the new UniSA Student Accommodation by **urbanest**, offering modern apartments in the Adelaide CBD. There is also dedicated student housing, homestay options, private rentals, non-profit housing and more. Go online to explore your options through the dedicated UniSA Rental Database.



[unisa.edu.au/accommodation](https://unisa.edu.au/accommodation)

## MENTAL HEALTH SUPPORT

UniSA has welcomed *batyr* to campus – an organisation that focuses on preventative education in the area of youth mental health – with a goal of building a safer, more connected and inclusive university. It's about rolling out initiatives to start positive conversations about mental health, educating and empowering people to learn from the experiences of others and explaining how to reach out for help if needed.



Learn more at [unisa.edu.au/batyr](https://unisa.edu.au/batyr)

## PAYING FOR YOUR STUDIES

If you are an Australian citizen, your place as a student at UniSA is Commonwealth-supported. This means you are charged for a portion of the cost of your studies and the Australian Government contributes the rest. If eligible, you can defer your contribution through a HECS-HELP loan, and repay it later through the taxation system. Your contribution will depend on what you study. See the fee table for a breakdown of student contribution amounts for 2018.

BAND	AREA OF STUDY	STUDENT CONTRIBUTION <small>For one year of full-time load (1 EFTSL) indicative of 2018 fees</small>
1	Humanities, behavioural science, social studies, foreign languages, visual and performing arts, clinical psychology, nursing and education	\$6,444
2	Computing, built environment, health, engineering, surveying, agriculture, mathematics, statistics, science	\$9,185
3	Law, dentistry, medicine, veterinary science, accounting, administration, economics, commerce	\$10,754

*Some postgraduate programs are also Commonwealth-supported (or CSP), while others are full fee-paying. For more information on fees including eligibility for Commonwealth-supported places, deferring your student contribution through HECS-HELP, FEE-HELP loans, or fee information relating to international students please visit: [unisa.edu.au/fees](https://unisa.edu.au/fees)*



**"Receiving a UniSA scholarship gave me a fresh start and has allowed me to follow my academic passions, and for that I am very grateful. I dream of being successful in the corporate world and establishing a program to create more employment opportunities for rural school leavers."**

**Alicia Barker**

*UniSA Rural Reconnect Relocation Scholarship  
Bachelor of Business, Bachelor of Laws*

# PATHWAYS INTO UniSA

Your Selection Rank (ATAR) is only one of many ways you can gain entry into your chosen UniSA degree.

## UniSA COLLEGE

UniSA College offers educational programs that can help you gain direct entry into a UniSA degree. These programs will prepare you for university study by building your academic skills and prerequisite knowledge. You will experience life as a UniSA student, be taught by UniSA staff and have access to a full-range of support services. By successfully completing your UniSA College program, you will then be able to seamlessly transfer into an undergraduate degree at UniSA.

[unisa.edu.au/college](https://unisa.edu.au/college)

### DIPLOMAS

UniSA College has four diplomas, which are two-year (or part-time equivalent) programs, designed to provide a pathway into over 80 linked UniSA degrees for those who do not meet the requirements for direct entry. In first year you will learn the skills needed to study at a tertiary level and in second year you will start studying first-year courses from your linked UniSA degree. You will be in the same lectures and tutorials as other first-year UniSA students, with the advantage of additional support provided through UniSA College.

On successful completion, you will graduate with a diploma qualification and then transfer into the second year of your chosen UniSA degree.

#### APPLICATIONS

##### Diploma in Arts

» SATAC code: 426O11

##### Diploma in Business

» SATAC code: 426O31

##### Diploma in Health

» SATAC code: 426O41

##### Diploma in Health (Mount Gambier)

» SATAC code: 476O01

##### Diploma in Science and Technology

» SATAC code: 426O21

### FOUNDATION STUDIES

This is a free\* one year program with no minimum entry qualifications required. You will learn the skills needed to study at a tertiary level, such as how the university works, how to write and reference academic assignments, and how to manage your time effectively. You will also gain discipline-specific skills and important base knowledge.

After successfully completing the program, you can use your Grade Point Average (GPA) to apply for any UniSA degree (a competitive GPA is required).

#### APPLICATIONS

» SATAC code: 427O21 (Adelaide)

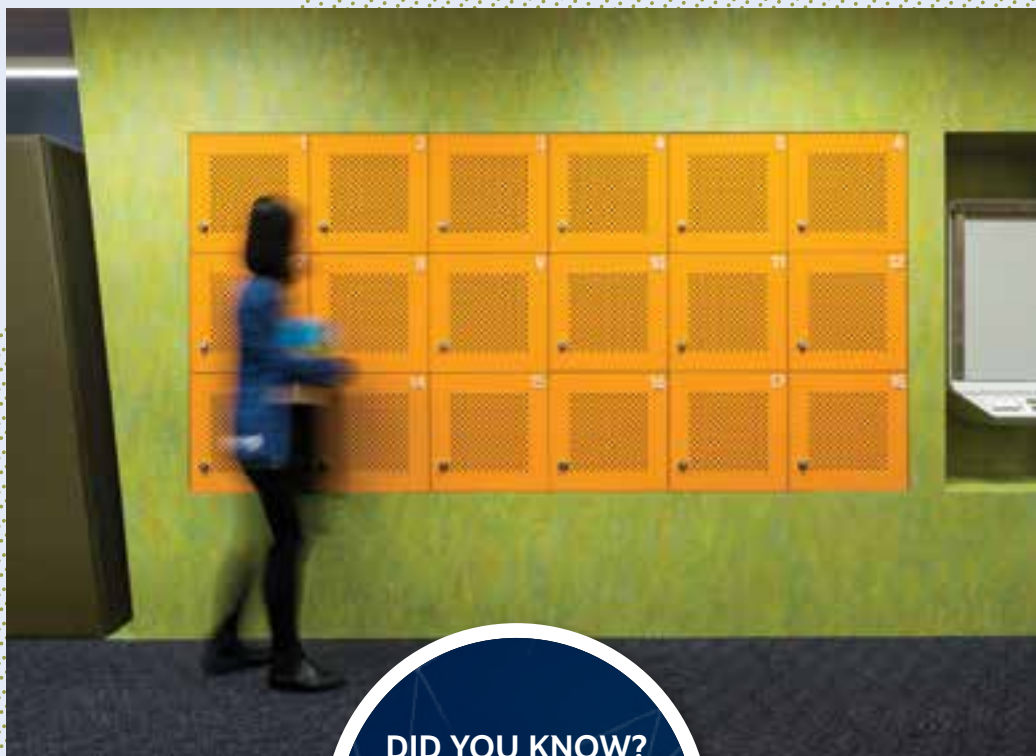
» SATAC code: 477O11 (Mount Gambier)

» SATAC code: 467O11 (Whyalla)

*\*Students will be required to pay the Student Services and Amenities Fee determined by the Australian Government.*







### DID YOU KNOW?

Diploma programs can be listed on your SATAC application as a back-up option to your preferred UniSA degrees

## ABORIGINAL PATHWAY PROGRAM (APP)

This is a free~ program for Aboriginal and Torres Strait Islander students with no previous qualifications. You will learn the skills required for successful university study and will begin introductory courses that relate specifically to your future bachelor degree.

After successfully completing the program, you can use your Grade Point Average (GPA) to apply for any UniSA degree (a competitive GPA is required).

APP is offered at City West Campus and in regional locations including Whyalla, Ceduna, Port Lincoln and Mount Gambier. You will have access to local tutors and a dedicated Program Director that will provide additional learning assistance during your studies.

*~Students will be required to pay the Student Services and Amenities Fee determined by the Australian Government.*

Apply directly at [unisa.edu.au/app](https://unisa.edu.au/app)

## PACKAGED PROGRAMS

Another option to consider is a packaged program through UniSA College. This guarantees you entry# into the linked UniSA bachelor degree as listed below.

**Diploma in Arts / Bachelor of Arts**  
» SATAC code: 424621

**Diploma in Business / Bachelor of Business**  
» SATAC code: 424631

**Diploma in Health / Bachelor of Health Science**  
» SATAC code: 426051

**Diploma in Science and Technology / Bachelor of Information Technology**  
» SATAC code: 424641

*#Academic criteria applies.*

## SELECTION RANK (ATAR)

If you have completed high school you may still be eligible to gain entry into your preferred UniSA degree using your Year 12 results. You can use your Selection Rank (previously known as ATAR) for no more than two years of full-time university study (16 courses).

## GUARANTEED ENTRY

UniSA offers guaranteed entry into many degrees. If your Selection Rank (ATAR) meets the UniSA Guaranteed Entry score, you have met the prerequisites and any specific entry requirements, and you have listed the degree as your first preference, you are guaranteed an offer.

[unisa.edu.au/guaranteed](https://unisa.edu.au/guaranteed)

## ADJUSTMENT FACTORS

UniSA offers adjustment factors (formerly known as bonus points) to high school students applying for entry. Additional points are based on set equity factors and/or subject choices.

[unisa.edu.au/adjustmentfactors](https://unisa.edu.au/adjustmentfactors)

## VOCATIONAL EDUCATION TRAINING (VET)

A completed Certificate IV, diploma or advanced diploma from TAFE or another Registered Training Organisation (RTO) may be all you need to apply for a UniSA degree.

## GUARANTEED ENTRY

If your completed VET award meets the UniSA Guaranteed Entry score, you have met the prerequisites and any specific entry requirements, and you have listed the degree as your first preference, you are guaranteed an offer.

## STUDY CREDIT

If you are successful in securing a place in a relevant UniSA degree, you may also be eligible to receive credit for your previous study, typically reducing the time it takes to complete the program.



**VISIT OUR ONLINE  
CREDIT ASSESSOR**

[unisa.edu.au/credit](https://unisa.edu.au/credit)

*See an instant snapshot of how your qualifications may count towards your UniSA degree. If your award is not listed, please contact Future Student Enquiries on (08) 8302 2376.*

## SPECIAL TERTIARY ADMISSIONS TEST

If you do not have a competitive result from Year 12, TAFE/RTO or previous university study, you may qualify for special entry into your preferred UniSA degree by choosing to sit the STAT – a two-hour test made up of 70 multiple choice questions designed to test your aptitude for tertiary study. Your results will be used to create a ranking that you can then use to compete for entry against other special entry applicants. To be eligible you must be aged over 18 years by 1 February (or 1 July for midyear entry) in the year you wish to commence your study. UniSA also offers full-day workshops to help you prepare.

[unisa.edu.au/stat](https://unisa.edu.au/stat)

## SAIBT

UniSA and SAIBT have a strong partnership that spans more than 15 years and has produced over 5,000 successful graduates. SAIBT's diploma programs provide direct entry with credit into more than 80 UniSA degrees (subject to academic results). Students have access to UniSA facilities and study in a diverse learning environment with small classes and personalised teaching.



[saibt.com.au](https://saibt.com.au)

## OPEN UNIVERSITIES AUSTRALIA

If you have completed at least four courses through OUA at an appropriate level, you may use your Grade Point Average (GPA) to apply for entry into a UniSA degree. OUA offers undergraduate courses across a variety of disciplines such as accounting and business, engineering, health, languages, management, and more.



[open.edu.au](https://open.edu.au)

## TERTIARY TRANSFER

If your Year 12 results were lower than expected, there are other options available that could help you gain entry into your preferred UniSA degree.

1. Start a different degree then use a competitive Grade Point Average (GPA) to apply to transfer into your first preference. You can do this after completing four courses, which is typically one full-time study period (at UniSA or another recognised institution).
2. Start a diploma pathway through UniSA College and use this program as an alternative entry option.



Explore your pathway options further at [unisa.edu.au/pathways](https://unisa.edu.au/pathways)



## Use your Selection Rank (ATAR) – Year 12.....

HIGH SCHOOL

Complete Year 12 and apply using your Selection Rank (ATAR). You may also be eligible for adjustment factors (bonus points) and/or guaranteed entry.

## Or take a UniSA pathway.....

UniSA COLLEGE

Complete the one-year **Foundation Studies** program, then apply to enter first year of a UniSA degree.

Complete a two-year **diploma**, then enter second year of a UniSA degree.

## Or take an alternative pathway.....

VET

Apply using a **certificate IV, diploma or advanced diploma** from TAFE or another RTO. You may also receive credit for your study or be eligible for guaranteed entry.

SOUTH AUSTRALIAN INSTITUTE OF BUSINESS AND TECHNOLOGY (SAIBT) DIPLOMA

Complete a **diploma** through SAIBT. Then enter second year of a related degree. A minimum Grade Point Average (GPA) is required.

SPECIAL TERTIARY ADMISSIONS TEST (STAT)

If you are over 18 and haven't completed more than two years of full-time tertiary study with university enrolment in the last two years, you can sit the STAT for entry into UniSA programs.

HIGHER EDUCATION STUDY

If you have completed at least half a year of full-time equivalent study (at either UniSA or another recognised institution) you can apply using your GPA.

Complete four courses at an appropriate level through Open Universities Australia (OUA), then apply to UniSA based on your GPA.

## Action

○ Explore your pathway options further at [unisa.edu.au/pathways](https://unisa.edu.au/pathways)

### MY PATHWAYS

**To discuss your pathway options** contact Future Student Enquiries on (08) 8302 2376 or [unisa.edu.au/enquire](https://unisa.edu.au/enquire). You can also schedule a 1:1 appointment at [unisa.edu.au/booking](https://unisa.edu.au/booking)



---

# STUDY ONLINE

---

Tailor your degree so that you have time to travel, work and study from any location. We offer over 70 flexible online degrees (noting some on-campus study may be required) and 100% online degrees through UniSA Online. Students studying online also have the benefit of accessing campus facilities if they choose, including computer pools, library resources and student support services.

For more information about our flexible degrees visit [unisa.edu.au/study](https://unisa.edu.au/study)

*70+ flexible online  
degrees available*

## **Your study modes**



### **On-campus**

*with some online study available*



### **On-campus/online**

*blended learning*



### **100% online**

*through UniSA Online*

## **UniSA Online** **STUDY ON DEMAND**





## Take full control of your study with our new 100% online, career-focused degrees.

Get online student support seven days a week, plan your study to fit around your life, access learning resources 24/7, and log in to an online interactive learning environment anywhere, any time and on any device.

Explore our range of degrees in:

ACCOUNTING
CONSTRUCTION MANAGEMENT
COMMUNICATION
COMMUNITY HEALTH
CRIMINAL JUSTICE
DIGITAL MEDIA
HUMAN RESOURCE MANAGEMENT
IT AND DATA ANALYTICS
MANAGEMENT
MARKETING
NUTRITION AND EXERCISE
PSYCHOLOGICAL SCIENCE AND SOCIOLOGY

### Why Study On Demand?

**Designed specifically for online learning**

**No need to come onto campus, all assessments 100% online**

**Four start dates per year in January, April, June and September**

**24/7 access to learning resources**

**Learn in ten-week blocks**

**Flexible around your life**

## SUPPORT SERVICES

We provide personalised support services over extended hours – including on weekends – so you can get help when you need it. Whether you need help with assignments, referencing, administrative or technical support, you'll have on demand access to a dedicated team ready to assist you every step of the way.



*Dedicated Student Adviser support to assist you with your studies*



*Access online tutor support seven days a week – including at night on weekdays*



*Access tech support 24/7*

## SCHOLARSHIPS AND GRANTS

There are a range of scholarships and grants available when you enrol in a UniSA Online degree. Visit the website to see what you may be eligible for.

[unisaonline.edu.au/scholarships](https://unisaonline.edu.au/scholarships)

## CREDIT CHECK

Fast-track your degree and receive credit for past study and/or work experience. All you need to do is take our simple credit check to see what you are eligible for.

[unisaonline.edu.au/credit](https://unisaonline.edu.au/credit)

## KEY DATES

Application closing dates for each term can be found at [unisaonline.edu.au/key-dates](https://unisaonline.edu.au/key-dates)

### How to apply

**Check your eligibility**

**Receive your conditional offer**

**Complete your application and send through your documents**

*To apply, visit [unisaonline.edu.au](https://unisaonline.edu.au) or call 1800 531 962*

# YOUR NEXT STEPS



## CHOOSE

Now is the time to decide. Gather all the information you need, explore different websites, read brochures, and attend UniSA Open Day. Choose what careers you are interested in and what degrees you want to study, check you have the prerequisite subjects, and make sure you understand the entry requirements.

[unisa.edu.au/study](https://unisa.edu.au/study)

[unisa.edu.au/infosessions](https://unisa.edu.au/infosessions)

TIP

*Get on campus. How will you know if UniSA is right for you if you don't check us out? Attend UniSA events throughout August to talk through degree options, careers and more.*



## APPLY

Armed with your list of preferences, you can now apply to UniSA through the SATAC website. Explore our resources to help you with your application.

[unisa.edu.au/applicants](https://unisa.edu.au/applicants)

TIP

*Apply to SATAC using a personal email address – one you can access after high school.*

*Remember to list your preferences in order of what you want to study most.*



## CHECK

Results are in. Check your Selection Rank (ATAR) to see if you are eligible for guaranteed entry to your preferred UniSA program.

[unisa.edu.au/guaranteed](https://unisa.edu.au/guaranteed)

Not the result you expected? Have a back-up plan with UniSA.

[unisa.edu.au/pathways](https://unisa.edu.au/pathways)

TIP

*Remember to pay your SATAC Application Fee. If you don't you won't be eligible to receive an offer.*



## RESPOND

The main round of UniSA offers are made in January. Read your SATAC email carefully for important information about responding to your offer and the program enrolment process.

[satac.edu.au](https://satac.edu.au)

TIP

*Didn't get an offer? Contact Future Student Enquiries to discuss your options on (08) 8302 2376 or [unisa.edu.au/enquire](https://unisa.edu.au/enquire)*



## PREPARE

Your university adventure starts here. Keep O-Week free to explore your campus, find lecture rooms, plan your timetable, navigate through your online student portal, and make new friends.

[unisa.edu.au/newstudents](https://unisa.edu.au/newstudents)

TIP

*Make it a priority to attend orientation activities. O-Week is the best time to sign up for UniSA Sport teams, the student association (USASA), and different clubs and societies.*



## KEY DATES

**12 August 2018**

Come along to UniSA Open Day at City East and City West from 9:00am–4:30pm

*Discover all of our campus events at [unisa.edu.au/campusdays](http://unisa.edu.au/campusdays)*

## KEY DATES

**6 August 2018**

SATAC applications open

**28 September 2018**

Early closing deadline

**3 December 2018**

Equal consideration deadline

## KEY DATES

**20 December 2018**

December offer round for first preferences only (may not include all UniSA programs)

**3 January 2019**

SATAC change of preference deadline

*Attend one of our events for more information, visit [unisa.edu.au/infosessions](http://unisa.edu.au/infosessions)*

## KEY DATES

**15 January 2019**

Main January offer round

## KEY DATES

**25 February – 1 March 2019**

O-Week at UniSA

**4 March 2019**

UniSA classes commence

# CAMPUS DAYS

## ATTEND OUR EVENTS

Our events give you the opportunity to ask questions about different degrees and careers, take a tour around campus, attend presentations, and talk to current staff and students.

### UniSA Open Day Sunday 12 August

9:00am – 4:30pm / City West Campus and City East Campus

### Mount Gambier Open Day Sunday 5 August

11:00am–4:00pm / Mount Gambier Campus

### Whyalla Open Day Sunday 26 August

11:00am–3:00pm / Whyalla Campus

### Mawson Lakes Campus Day Tuesday 28 August

4:00pm–7:30pm / Mawson Lakes Campus

### Magill@Twilight Wednesday 29 August

4:00pm–8:00pm / Magill Campus

We also offer campus tours in the school holidays.

[unisa.edu.au/campusdays](http://unisa.edu.au/campusdays)

# UNDERGRADUATE DEGREES OFFERED IN 2019

	SATAC code	Program length (years)	Home campus	Study mode <sup>+</sup>	Part-time study available	Mid-year entry available	Selection Rank (ATAR) (Final Sem 1 cut off) <sup>18</sup>	Guaranteed Entry – Selection Rank (ATAR)	Prerequisite at Stage 2 (Minimum score C-)	Assumed Knowledge (Stage 2 unless stated)	Adjustment Factors <sup>19</sup> (Previously known as Bonus Points)	Guaranteed Entry – Selection Rank (VET)	Minimum VET Entry	UniSA College Pathways	STAT Entry
<b>Art, Architecture, Planning and Design</b>															
Bachelor of Architectural Studies	424441	3	CW	OC	Y	Y	70.30	80.00			Y	AdvDip	CIV	DipA, FS	Y
Bachelor of Contemporary Art	424801	3	CW	OC	Y	Y	60.60	70.00			Y	Dip	CIV	DipA, FS	Y
Bachelor of Design (Communication Design)	424151	3	CW	OC	Y	Y	61.35	70.00			Y	Dip	CIV	DipA, FS	Y
Bachelor of Design (Illustration and Animation)	424791	3	CW	OC	Y	Y	60.05	70.00			Y	Dip	CIV	DipA, FS	Y
Bachelor of Design (Product Design)	424551	3	CW	OC	Y	Y	60.00	70.00			Y	Dip	CIV	DipA, FS	Y
Bachelor of Interior Architecture	424081	4	CW	OC	Y	Y	65.10	75.00			Y	Dip	CIV	DipA, FS	Y
<b>Aviation and Safety Management</b>															
Bachelor of Aviation (Management)	434131	3	ML	OC	Y	Y	62.35	75.00			Y	Dip	CIV	FS	Y
Bachelor of Aviation (Pilot)	434141	3	ML	OC	Y	Y	65.20	75.00			Y	Dip	CIV	FS	Y
<b>Business, Management, Accounting, Finance, Economics, and Property</b>															
Bachelor of Business	424571	3	CW	OC/OL	Y	Y	63.10	70.00			Y	CIV	CIV	DipB, FS	Y
Bachelor of Business (Design and Marketing)	424920	3	CW	OC/OL	Y	Y	NEW	70.00			Y	Dip	CIV	Dip B, FS	Y
Bachelor of Business (Economics, Finance and Trade)	424091	3	CW	OC/OL	Y	Y	63.15	70.00			Y	Dip	CIV	DipB, FS	Y
Bachelor of Business (Finance)	424051	3	CW	OC/OL	Y	Y	64.25	70.00			Y	Dip	CIV	DipB, FS	Y
Bachelor of Business (Financial Planning)	424921	3	CW	OC/OL	Y	Y	NEW	70.00			Y	Dip	CIV	DipB, FS	Y
Bachelor of Business (Human Resource Management)	424351	3	CW	OC/OL	Y	Y	65.75	70.00			Y	Dip	CIV	DipB, FS	Y
Bachelor of Business (Information Strategy and Management)	424671	3	CW	OC/OL	Y	Y	71.50	70.00			Y	CIV	CIV	DipB, FS	Y
Bachelor of Business (Innovation and Entrepreneurship)	424591	3	CW	OC/OL	Y	Y	63.40	70.00			Y	CIV	CIV	DipB, FS	Y
Bachelor of Business (International Business)	424681	3	CW	OC/OL	Y	Y	63.75	70.00			Y	CIV	CIV	DipB, FS	Y
Bachelor of Business (Legal Studies)	424611	3	CW	OC	Y	Y	67.85	70.00			Y	Dip	CIV	DipB, FS	Y
Bachelor of Business (Logistics and Supply Chain Management)	424511	3	CW	OC/OL	Y	Y	69.35	70.00			Y	Dip	CIV	DipB, FS	Y
Bachelor of Business (Management)	424101	3	CW	OC/OL	Y	Y	63.65	70.00			Y	Dip	CIV	DipB, FS	Y
Bachelor of Business (Marketing)	424111	3	CW	OC/OL	Y	Y	63.40	70.00			Y	Dip	CIV	DipB, FS	Y
Bachelor of Business (Property)	424131	3	CW	OC/OL	Y	Y	64.25	70.00			Y	Dip	CIV	DipB, FS	Y
Bachelor of Business (Real Estate Practice)	424922	3	CW	OC/OL	Y	Y	NEW	70.00			Y	Dip	CIV	DipB, FS	Y
Bachelor of Business (Sport and Recreation Management)	434191	3	CW	OC	Y	Y	63.50	70.00			Y	Dip	CIV	DipB, FS	Y
Bachelor of Business (Tourism and Event Management)	424371	3	CW	OC/OL	Y	Y	63.35	70.00			Y	Dip	CIV	DipB, FS	Y
Bachelor of Commerce (Accounting)	424181	3	CW	OC/OL	Y	Y	63.70	70.00			Y	Dip	CIV	DipB, FS	Y
Bachelor of Commerce (Accounting), Bachelor of Business (Finance)	424191	4	CW	OC/OL	Y	Y	64.30	70.00			Y	Dip	CIV	DipB, FS	Y
Bachelor of Marketing and Communication	424451	3	CW & M	OC/OL	Y	Y	64.60	70.00			Y	Dip	CIV	DipB, FS	Y
Bachelor of Psychological Science (Counselling and Interpersonal Skills), Bachelor of Business (Human Resource Management)	444541	4	M & CW	OC	Y	Y	63.10	75.00			Y	Dip	CIV	FS	Y
<b>Education</b>															
Bachelor of Early Childhood Education (Honours) <sup>2</sup>	444590	4	M or ML	OC/OL	Y	N	NEW	80.00			Y	Dip	Dip	DipA, FS	Y
Bachelor of Primary Education (Honours) <sup>2</sup>	444591	4	M or ML	OC/OL	Y	N	NEW	80.00			Y	Dip	Dip	DipA, FS	Y
Bachelor of Education (Secondary Design and Technology) <sup>2</sup>	434071	4	ML	OC	Y	N	70.40	80.00			Y	Dip	Dip	FS	Y
Bachelor of Education (Secondary Food and Textiles Technologies) <sup>2</sup>	434081	4	ML	OC	Y	N	69.35	80.00			Y	Dip	Dip	FS	Y
Bachelor of Arts/Master of Teaching (Secondary)	444521	3+2	M & ML	OC	Y	Y	71.30	n/a			Y	n/a	CIV	DipA, FS	Y
Bachelor of Arts (Aboriginal Cultures and Australian Society)/Master of Teaching	444571	3+2	M & ML	OC	Y	Y	#10	n/a			Y	n/a	CIV	DipA, FS	Y
Bachelor of Contemporary Art/Master of Teaching (Secondary)	424811	3+2	CW & ML	OC	Y	Y	70.35	n/a			Y	Dip	CIV	DipA, FS	Y
Bachelor of Human Movement/Master of Teaching (Secondary)	414401	3+2	CE & ML	OC	Y	N	80.70	n/a			Y	n/a	Dip	FS	Y
Bachelor of Mathematics (Data Science)/Master of Teaching (Secondary)	434221	3+2	ML	OC/OL	Y	Y	78.90	n/a	#1		Y	n/a	CIV	DipST, FS	Y
Bachelor of Mathematics (Industrial and Applied Mathematics)/Master of Teaching (Secondary)	434181	3+2	ML	OC/OL	Y	Y	97.90	n/a	#1		Y	n/a	CIV	DipST, FS	Y
Bachelor of Media Arts/Master of Teaching (Secondary)	444531	3+2	M & ML	OC	Y	Y	72.40	n/a			Y	n/a	CIV	DipA, FS	Y
Bachelor of Science/Master of Teaching (Secondary)	434101	3+2	ML	OC	Y	Y	78.90	n/a	#13	#6	Y	AdvDip	CIV	DipST, FS	Y
<b>Engineering</b>															
Associate Degree in Engineering	435021	2	ML	OC <sup>6</sup>	Y	Y	60.10	65.00			Y	CIV	CIV	FS	Y
Bachelor of Engineering (Honours) (Flexible Entry)	434242	1	ML	OC	Y	Y	NEW	80.00	#1	#2	Y	Dip	CIV	DipST, AE, FS	Y
Bachelor of Engineering (Honours) (Civil and Project Management)	434151	4	ML	OC	Y	Y	74.40	80.00	#1	#2	Y	Dip	CIV	DipST, AE, FS	Y
Bachelor of Engineering (Honours) (Civil and Structural)	434941	4	ML	OC	Y	Y	72.95	80.00	#1	#2	Y	Dip	CIV	DipST, AE, FS	Y
Bachelor of Engineering (Honours) (Civil)	434481	4	ML	OC	Y	Y	80.55	80.00	#1	#2	Y	Dip	CIV	DipST, AE, FS	Y
Bachelor of Engineering (Honours) (Electrical and Electronic)	434951	4	ML	OC	Y	Y	70.40	80.00	#1	#2	Y	Dip	CIV	DipST, AE, FS	Y
Bachelor of Engineering (Honours) (Electrical and Mechatronic)	434451	4	ML	OC	Y	Y	76.80	80.00	#1	#2	Y	Dip	CIV	DipST, AE, FS	Y
Bachelor of Engineering (Honours) (Mechanical and Advanced Manufacturing)	434791	4	ML	OC	Y	Y	73.15	80.00	#1	#2	Y	Dip	CIV	DipST, AE, FS	Y
Bachelor of Engineering (Honours) (Mechanical and Mechatronic)	434781	4	ML	OC	Y	Y	71.55	80.00	#1	#2	Y	Dip	CIV	DipST, AE, FS	Y
Bachelor of Engineering (Honours) (Mechanical)	434321	4	ML	OC	Y	Y	70.40	80.00	#1	#2	Y	Dip	CIV	DipST, AE, FS	Y
<b>Health and Medical Sciences</b>															
Bachelor of Clinical Exercise Physiology (Honours)	414441	4	CE	OC	Y	N	91.75	n/a			Y	n/a	AdvDip	FS	Y
Bachelor of Exercise and Sport Science	414461	3	CE	OC	Y	N	80.05	90.00			Y	AdvDip	Dip	DipH, FS	Y
Bachelor of Exercise and Sport Science, Bachelor of Nutrition and Food Sciences	414471	4	CE	OC	Y	N	81.00	90.00			Y	AdvDip	Dip	FS	Y



	SATAC code	Program length (years)	Home campus	Study mode <sup>+</sup>	Part-time study available	Mid-year entry available	Selection Rank (ATAR) (final Sem 1 cut off) <sup>10</sup>	Guaranteed Entry – Selection Rank (ATAR)	Prerequisite at Stage 2 (Minimum score C-) for 2019 entry	Assumed Knowledge (Stage 2 unless stated)	Adjustment Factors <sup>1</sup> (Previously known as Bonus Points)	Guaranteed Entry – Selection Rank (VET)	Minimum VET Entry	UniSA College Pathways	STAT Entry
Bachelor of Exercise and Sport Science, Bachelor of Psychological Science (Counselling and Interpersonal Skills)	414451	4	CE & M	OC	N	N	80.25	90.00			Y	AdvDip	Dip	FS	Y
Bachelor of Health Science	414311	3	CE	OC	Y	N	65.40	75.00		Y		Dip	Dip	DipH, FS	Y
Bachelor of Human Movement	414231	3	CE	OC	Y	N	75.00	80.00		Y		AdvDip	Dip	DipH, FS	Y
Bachelor of Human Movement, Bachelor of Nutrition and Food Sciences	414431	4	CE	OC	Y	N	76.25	80.00		Y		AdvDip	Dip	FS	Y
Bachelor of Human Movement, Bachelor of Psychological Science (Counselling and Interpersonal Skills)	414421	4	CE & M	OC	Y	N	75.25	80.00		Y		AdvDip	Dip	FS	Y
Bachelor of Laboratory Medicine (Honours)	414491	4	CE	OC	Y	N	73.60	85.00	#3	Y		Dip Lab Tech	Dip	DipH, FS	Y
Bachelor of Medical Radiation Science (Medical Imaging)	414371	4	CE	OC	N	N	98.55	n/a		Y		n/a	AdvDip	FS	Y
Bachelor of Medical Radiation Science (Nuclear Medicine)	414341	4	CE	OC	N	N	96.40	n/a		Y		n/a	AdvDip	FS	Y
Bachelor of Medical Radiation Science (Radiation Therapy)	414361	4	CE	OC	N	N	95.30	n/a		Y		n/a	AdvDip	FS	Y
Bachelor of Medical Science	414381	3	CE	OC	Y	N	70.80	85.00		Y		AdvDip	Dip	DipH, FS	Y
Bachelor of Midwifery*	414241	3	CE	OC/OL	Y	N	90.20	n/a		Y		n/a	AdvDip	FS	Y
Bachelor of Midwifery (External)	414245	3	CE	OC/OL	Y	N	90.50	n/a		Y		n/a	AdvDip	FS	Y
Bachelor of Nursing <sup>^</sup>	414141	3	CE	OC/OL	Y	N	63.05	70.00		Y		#12	Dip, #7	DipH, FS	Y
Bachelor of Nursing (External)	414145	3	CE	OC/OL	Y	N	63.10	70.00		Y		#12	Dip, #7	DipH, FS	Y
Bachelor of Nutrition and Food Sciences	414291	3	CE	OC	Y	N	71.30	80.00		Y		Dip	Dip	DipH, FS	Y
Bachelor of Occupational Therapy (Honours)	414500	4	CE	OC	N	N	NEW	n/a		Y		n/a	AdvDip	FS	Y
Bachelor of Pharmaceutical Science	414331	3	CE	OC	Y	N	71.10	80.00	#3	Y		Dip	Dip	DipH, FS	Y
Bachelor of Pharmacy (Honours)	414411	4	CE	OC	Y	N	80.35	85.00	#3	Y		AdvDip	Dip	FS	Y
Bachelor of Physiotherapy (Honours)	414481	4	CE	OC	N	N	96.30	n/a		#4, #2	Y	n/a	AdvDip	FS	Y
Bachelor of Podiatry	414321	4	CE	OC	N	N	80.55	n/a		#4, #5	Y	n/a	AdvDip	FS	Y
<b>Journalism, Media, Arts and Communication</b>															
Bachelor of Arts	444341	3	M	OC	Y	Y	60.00	70.00		Y		Dip	CIV	DipA, FS	Y
Bachelor of Arts (Aboriginal Cultures and Australian Society)	444561	3	M	OC/OL	Y	Y	61.60	70.00		Y		Dip	CIV	DipA, FS	Y
Bachelor of Arts (Creative Writing and Literature)	444351	3	M	OC	Y	Y	NEW	70.00		Y		Dip	CIV	DipA, FS	Y
Bachelor of Arts (Cultural Studies)	444593	3	M	OC	Y	Y	NEW	70.00		Y		Dip	CIV	DipA, FS	Y
Bachelor of Arts (English Language)	444594	3	M	OC	Y	Y	NEW	70.00		Y		Dip	CIV	DipA, FS	Y
Bachelor of Arts (History and Global Politics)	444592	3	M	OC	Y	Y	NEW	70.00		Y		Dip	CIV	DipA, FS	Y
Bachelor of Arts (Languages)	444381	3	M	OC	Y	Y	63.50	70.00		Y		Dip	CIV	DipA, FS	Y
Bachelor of Arts (Applied Linguistics)	444391	3	M	OC	Y	Y	70.65	70.00		Y		Dip	CIV	DipA, FS	Y
Bachelor of Arts (Performing Arts)	444401	3	M	OC	Y	Y	61.05	70.00		Y		Dip	CIV	DipA, FS	Y
Bachelor of Arts (Psychology)	444595	3	M	OC	Y	Y	NEW	70.00		Y		Dip	CIV	DipA, FS	Y
Bachelor of Arts (Screen Studies)	444597	3	M	OC	Y	Y	NEW	70.00		Y		Dip	CIV	DipA, FS	Y
Bachelor of Arts (Social Media)	444596	3	M	OC	Y	Y	NEW	70.00		Y		Dip	CIV	DipA, FS	Y
Bachelor of Arts (Sociology)	444411	3	M	OC	Y	Y	64.45	70.00		Y		Dip	CIV	DipA, FS	Y
Bachelor of Communication and Media	444421	3	M & CW	OC	Y	Y	60.10	70.00		Y		Dip	CIV	DipA, FS	Y
Bachelor of Journalism and Professional Writing	444431	3	M	OC	Y	Y	61.85	70.00		Y		Dip	CIV	DipA, FS	Y
Bachelor of Journalism and Professional Writing, Bachelor of Arts (Creative Writing and Literature)	444461	4	M	OC	Y	Y	62.95	70.00		Y		Dip	CIV	DipA, FS	Y
Bachelor of Marketing and Communication	424451	3	CW & M	OC/OL	Y	Y	64.60	70.00		Y		Dip	CIV	DipB, FS	Y
Bachelor of Media Arts	444471	3	M	OC	Y	Y	60.05	70.00		Y		Dip	CIV	DipA, FS	Y
Bachelor of Music <sup>2</sup>	AO	3	MG <sup>#</sup>	OC	N	N	n/a	n/a		Y		n/a	n/a	DipA, DipM, FS	Y
Diploma in Languages <sup>1</sup>	AO	1	M	OC	Y	N	n/a	n/a		Y		n/a	n/a	n/a	Y
Diploma in Music <sup>2</sup>	AO	1	MG <sup>#</sup>	OC	N	N	n/a	n/a		Y		n/a	n/a	n/a	Y
<b>Law</b>															
Bachelor of Business (Legal Studies)	424611	3	CW	OC	Y	Y	67.85	70.00		Y		Dip	CIV	DipB, FS	Y
Bachelor of Laws (Honours)	424821	4	CW	OC	Y	Y	83.05	95.00		Y		AdvDip	Dip	FS	Y
Bachelor of Laws (Honours), Bachelor of Arts	424831	5	CW & M	OC	Y	Y	81.15	95.00		Y		AdvDip	Dip	FS	Y
Bachelor of Laws (Honours), Bachelor of Business (Economics, Finance and Trade)	424831	5	CW	OC	Y	Y	81.15	95.00		Y		AdvDip	Dip	FS	Y
Bachelor of Laws (Honours), Bachelor of Business (Human Resource Management)	424831	5	CW	OC	Y	Y	81.15	95.00		Y		AdvDip	Dip	FS	Y
Bachelor of Laws (Honours), Bachelor of Business (Management)	424831	5	CW	OC	Y	Y	81.15	95.00		Y		AdvDip	Dip	FS	Y
Bachelor of Laws (Honours), Bachelor of Business (Marketing)	424831	5	CW	OC	Y	Y	81.15	95.00		Y		AdvDip	Dip	FS	Y
Bachelor of Laws (Honours), Bachelor of Business (Sport and Recreation Management)	424831	5	CW	OC	Y	Y	81.15	95.00		Y		AdvDip	Dip	FS	Y
Bachelor of Laws (Honours), Bachelor of Business (Tourism and Event Management)	424831	5	CW	OC	Y	Y	81.15	95.00		Y		AdvDip	Dip	FS	Y
Bachelor of Laws (Honours), Bachelor of Commerce (Accounting)	424831	5	CW	OC	Y	Y	81.15	95.00		Y		AdvDip	Dip	FS	Y
Bachelor of Laws (Honours), Bachelor of Journalism and Professional Writing	424831	5	CW & M	OC	Y	Y	81.15	95.00		Y		AdvDip	Dip	FS	Y
Bachelor of Laws (Honours), Bachelor of Psychological Science	424831	5	CW & M	OC	Y	Y	81.15	95.00		Y		AdvDip	Dip	FS	Y
<b>Maths and Information Technology</b>															
Bachelor of Information Technology	434041	3	ML	OC/OL	Y	Y	60.75	70.00		Y		Dip	CIV	DipST, FS	Y
Bachelor of Information Technology (Games and Entertainment Design)	434881	3	ML	OC/OL	Y	Y	60.75	70.00		Y		Dip	CIV	DipST, FS	Y

# UNDERGRADUATE DEGREES OFFERED IN 2019

	SATC code	Program length (years)	Home campus	Study mode <sup>+</sup>	Part-time study available	Mid-year entry available	Selection Rank (ATAR) (Final Sem 1 cut off) <sup>18</sup>	Guaranteed Entry – Selection Rank (ATAR)	Prerequisite at Stage 2 (Minimum score C-) for 2019 entry	Assumed Knowledge (Stage 2 unless stated)	Adjustment Factors <sup>19</sup> (Previously known as Bonus Points)	Guaranteed Entry – Selection Rank (VET)	Minimum VET Entry	UniSA College Pathways	STAT Entry
Bachelor of Information Technology (Honours) (Enterprise Business Solutions)	434121	4	ML	OC	N	N	84.45	n/a			Y	Dip in IT	Dip in IT	FS	Y
Bachelor of Information Technology (Mobile Application Development)	434091	3	ML	OC/OL	Y	Y	64.45	70.00		Y		Dip	CIV	DipST, FS	Y
Bachelor of Information Technology (Networking and Cybersecurity)	434891	3	ML	OC/OL	Y	Y	60.30	70.00		Y		Dip	CIV	DipST, FS	Y
Bachelor of Information Technology (Software Development)	434871	3	ML	OC/OL	Y	Y	63.85	70.00		Y		Dip	CIV	DipST, FS	Y
Bachelor of Mathematics (Data Science)	434171	3	ML	OC/OL	Y	Y	83.55	85.00	#1	Y		Dip	CIV	DipST, FS	Y
Bachelor of Mathematics (Industrial and Applied Mathematics)	434161	3	ML	OC/OL	Y	Y	#10	85.00	#1	Y		Dip	CIV	DipST, FS	Y
Bachelor of Software Engineering (Honours)	434211	4	ML	OC/OL	Y	Y	71.65	80.00		Y		Dip in IT	Dip in IT	DipST, FS	Y
<b>Psychology, Social Work and Human Services</b>															
Bachelor of Exercise and Sport Science, Bachelor of Psychological Science (Counselling and Interpersonal Skills)	414451	4	CE & M	OC	N	N	80.25	90.00		Y		AdvDip	Dip	FS	Y
Bachelor of Human Movement, Bachelor of Psychological Science (Counselling and Interpersonal Skills)	414421	4	CE & M	OC	Y	N	75.25	80.00		Y		AdvDip	Dip	FS	Y
Bachelor of Psychological Science	444211	3	M	OC	Y	Y	60.00	70.00		Y		Dip	CIV	DipA, FS	Y
Bachelor of Psychological Science (Cognitive Neuroscience)	444331	3	M	OC	Y	N	70.05	80.00		Y		AdvDip	CIV	FS	Y
Bachelor of Psychological Science (Counselling and Interpersonal Skills)	444481	3	M	OC	Y	Y	60.00	70.00		Y		Dip	CIV	DipA, FS	Y
Bachelor of Psychological Science (Counselling and Interpersonal Skills), Bachelor of Business (Human Resource Management)	444541	4	M & CW	OC	Y	Y	63.10	75.00		Y		Dip	CIV	FS	Y
Bachelor of Psychology (Honours)	444221	4	M	OC	Y	N	85.60	98.00		Y		AdvDip	Dip	FS	Y
Bachelor of Psychology (Honours) (Cognitive Neuroscience)	444551	4	M	OC	Y	N	85.10	98.00		Y		AdvDip	Dip	FS	Y
Bachelor of Social Science (Ageing and Disability)	444599	3	M	OC	Y	Y	NEW	70.00		Y		Dip	CIV	DipA, FS	Y
Bachelor of Social Science (Human Services)	444101	3	M	OC	Y	Y	62.95	70.00		Y		Dip	CIV	DipA, FS	Y
Bachelor of Social Work <sup>^</sup>	444111	4	M	OC	Y	N	60.05	70.00		Y		Dip	CIV	DipA, FS	Y
Bachelor of Social Work (Honours) <sup>^</sup>	444491	4	M	OC	Y	N	81.60	85.00		Y		AdvDip	CIV	DipA, FS	Y
Bachelor of Social Science (Human Services), Bachelor of Arts	444581	4	M	OC	Y	Y	60.60	70.00		Y		Dip	CIV	DipA, FS	Y
Bachelor of Social Science (Human Services), Bachelor of Psychological Science	444241	4	M	OC	Y	Y	60.85	70.00		Y		Dip	CIV	DipA, FS	Y
<b>Science and the Environments</b>															
Bachelor of Built Environment	414301	3	CE	OC	Y	Y	67.00	75.00		Y		Dip	CIV	DipST, FS	Y
Bachelor of Construction Management and Economics (Honours)	414021	4	CE	OC	Y	Y	81.05	85.00		Y		AdvDip	CIV	DipST, FS	Y
Bachelor of Environmental Science	434921	3	ML	OC	Y	Y	60.60	70.00		Y		Dip	CIV	DipST, FS	Y
Bachelor of Science	434201	3	ML	OC	Y	Y	61.20	70.00	#13	#6	Y	Dip	CIV	DipST, FS	Y
<b>Whyalla and Mount Gambier Programs</b>															
Bachelor of Early Childhood Education (Honours) (Mount Gambier) <sup>2</sup>	474090	4	MG	OC/OL	Y	N	NEW	80.00		Y		Dip	Dip	DipA, FS	Y
Bachelor of Early Childhood Education (Honours) (Whyalla) <sup>2</sup>	464170	4	W	OC/OL	Y	N	NEW	80.00		Y		Dip	Dip	DipA, FS	Y
Bachelor of Primary Education (Honours) (Mount Gambier) <sup>2</sup>	474091	4	MG	OC/OL	Y	N	NEW	80.00		Y		Dip	Dip	DipA, FS	Y
Bachelor of Primary Education (Honours) (Whyalla) <sup>2</sup>	464171	4	W	OC/OL	Y	N	NEW	80.00		Y		Dip	Dip	DipA, FS	Y
Bachelor of Midwifery (Mount Gambier)	474081	3	MG	OC/OL	Y	N	NEW	n/a		Y		n/a	Adv Dip	FS	Y
Bachelor of Music <sup>2</sup>	AO	3	MC#	OC	N	N	n/a	n/a		Y		n/a	n/a	DipA, DipM, FS	Y
Bachelor of Nursing (Mount Gambier)	474031	3	MG	OC/OL	Y	N	66.60	70.00		Y		#12	Dip, #7	DipH, FS	Y
Bachelor of Nursing (Whyalla)	464071	3	W	OC/OL	Y	N	66.45	70.00		Y		#12	Dip, #7	FS	Y
Bachelor of Social Work (Mount Gambier)	474041	4	MG	OC	Y	N	67.75	70.00		Y		Dip	CIV	FS	Y
Bachelor of Social Work (Whyalla)	464081	4	W	OC	Y	N	60.30	70.00		Y		Dip	CIV	FS	Y
Diploma in Music <sup>2</sup>	AO	1	MC#	OC	N	N	n/a	n/a		Y		n/a	n/a	n/a	Y
Aboriginal Pathway Program	n/a	15	CW~	OC	Y	N	n/a	n/a		Y		n/a	#11	n/a	Y
Diploma in Health (Mount Gambier)	476001	2	MG	OC	Y	Y	50.00	50.00		Y		n/a	CIII, #8	n/a	Y
UniSA Foundation Studies (Mount Gambier)	477011	1	MG	OC	Y	Y	n/a	n/a		Y		n/a	#9	n/a	N
UniSA Foundation Studies (Whyalla)	467011	1	W	OC	Y	Y	n/a	n/a		Y		n/a	#9	n/a	N
<b>UniSA Online Programs</b>															
Bachelor of Business (Human Resource Management)	AO <sup>1</sup>	3	UO	100% OL	Y	Y	NEW	n/a				CIV	CIV	FS	Y
Bachelor of Business (Management)	AO <sup>1</sup>	3	UO	100% OL	Y	Y	NEW	n/a				CIV	CIV	FS	Y
Bachelor of Business (Marketing)	AO <sup>1</sup>	3	UO	100% OL	Y	Y	NEW	n/a				CIV	CIV	FS	Y
Bachelor of Commerce (Accounting)	AO <sup>1</sup>	3	UO	100% OL	Y	Y	NEW	n/a				CIV	CIV	FS	Y
Bachelor of Communication	AO <sup>1</sup>	3	UO	100% OL	Y	Y	NEW	n/a				CIV	CIV	FS	Y
Bachelor of Community Health	AO <sup>1</sup>	3	UO	100% OL	Y	Y	NEW	n/a				CIV	CIV	FS	Y
Bachelor of Construction Management	AO <sup>1</sup>	3	UO	100% OL	Y	N	NEW	n/a				CIV	CIV	FS	Y
Bachelor of Criminal Justice	AO <sup>1</sup>	3	UO	100% OL	Y	Y	NEW	n/a				CIV	CIV	FS	Y
Bachelor of Digital Media	AO <sup>1</sup>	3	UO	100% OL	Y	Y	NEW	n/a				CIV	CIV	FS	Y
Bachelor of Health Science (Nutrition and Exercise)	AO <sup>1</sup>	3	UO	100% OL	Y	Y	NEW	n/a				CIV	CIV	FS	Y
Bachelor of Information Technology and Data Analytics	AO <sup>1</sup>	3	UO	100% OL	Y	N	NEW	n/a				CIV	CIV	FS	Y
Bachelor of Psychological Science and Sociology	AO <sup>1</sup>	3	UO	100% OL	Y	Y	NEW	n/a				CIV	CIV	FS	Y
<b>Pathway Programs</b>															
Aboriginal Pathway Program	n/a	15	CW~	OC	Y	N	n/a	n/a		Y		n/a	#11	n/a	Y
Diploma in Arts	426011	2	CW & M	OC	Y	Y	50.15	50.00		Y		n/a	CIII, #8	n/a	Y
Diploma in Arts/Bachelor of Arts	424621	2+2	CW & M	OC	Y	Y	50.00	50.00		Y		n/a	CIII, #8	n/a	Y
Diploma in Business	426031	2	CW	OC	Y	Y	50.30	50.00		Y		n/a	CIII, #8	n/a	Y



	SATAC code	Program length (years)	Home campus	Study mode <sup>+</sup>	Part-time study available	Mid-year entry available	Selection Rank (ATAR) (Final Sem 1 cut off) <sup>10</sup>	Guaranteed Entry – Selection Rank (ATAR)	Prerequisite at Stage 2 (Minimum score C-) for 2019 entry	Assumed Knowledge (Stage 2 unless stated)	Adjustment Factors <sup>11</sup> (Previously known as Bonus Points)	Guaranteed Entry – Selection Rank (VET)	Minimum VET Entry	UniSA College Pathways	STAT Entry
Diploma in Business/Bachelor of Business	424631	2+2	CW	OC	Y	Y	50.00	50.00			Y	n/a	CIII, #8	n/a	Y
Diploma in Health	426041	2	CW & CE	OC	Y	Y	50.05	50.00			Y	n/a	CIII, #8	n/a	Y
Diploma in Health/Bachelor of Health Science	426051	2+2	CW & CE	OC	Y	Y	50.00	50.00			Y	n/a	CIII, #8	n/a	Y
Diploma in Science and Technology	426021	2	CW & ML	OC	Y	Y	52.25	50.00			Y	n/a	CIII, #8	n/a	Y
Diploma in Science and Technology/Bachelor of Information Technology	424641	2+2	CW & ML	OC	Y	Y	50.00	50.00			Y	n/a	CIII, #8	n/a	Y
UniSA Foundation Studies	427021	1	CW	OC	Y	Y	n/a	n/a			Y	n/a	#9	n/a	N

## KEY

### Campus codes

CE	City East
CW	City West
ML	Mawson Lakes
M	Magill
MG	Mount Gambier
W	Whyalla
UO	UniSA Online

### International Baccalaureate/ Interstate equivalents

#### Mathematical Methods:

IB: Mathematics HL (Min grade 3), Mathematics SL (Min grade 4); VIC: Mathematical Methods (Major); ACT: Mathematical Methods, Specialist Mathematics (Major—Minor); NSW: Mathematics Extensions 1, Mathematics; QLD: Mathematics B; TAS: Mathematics Methods, Mathematics I & Mathematics II (Major—Minor); WA: Mathematics Methods ATAR.

#### Specialist Mathematics:

IB: Mathematics (HL) (Min Grade 3); VIC: Specialist Mathematics; ACT: Specialist Mathematics (Double Major); NSW: Mathematics Extension 2; QLD: Mathematics C; TAS: Mathematics Specialised; WA: Specialist Mathematics (ATAR).

### UniSA pathway codes

FS	Foundation Studies
DipA	Diploma in Arts
DipB	Diploma in Business
DipH	Diploma in Health
DipM	Diploma in Music
DipST	Diploma in Science and Technology
AE	Associate Degree in Engineering

### Symbol codes

1	This program is designed to be studied concurrently with any UniSA bachelor degree.
2	Additional non-academic entry criteria applies.
AO	Apply directly to the University of South Australia at <a href="http://unisa.edu.au/applyonline">unisa.edu.au/applyonline</a>
AO <sup>1</sup>	Apply directly at <a href="http://unisaonline.edu.au">unisaonline.edu.au</a>
CIII	Certificate III or higher award.
CIV	Certificate IV or higher award.
Dip	Diploma or higher award.
AdvDip	Advanced diploma or higher award.
NB	The Final Semester 1 Selection Rank scores displayed are for entry into UniSA programs in 2018. Selection Rank scores vary yearly and should be used as a guide only.
Δ	Eligibility criteria applies, visit <a href="http://unisa.edu.au/adjustmentfactors">unisa.edu.au/adjustmentfactors</a>
JMA	Apply directly to the James Morrison Academy of Music at <a href="http://jamesmorrisonacademy.com">jamesmorrisonacademy.com</a>
n/a	Does not apply to this program
+	For more information about study modes, visit <a href="http://unisa.edu.au/study">unisa.edu.au/study</a>
OC	Students will complete their studies on campus.
OC/OL	Students may complete their studies online or on-campus. Students may be required to attend on-campus workshops and assessments.
OL	Students complete their studies online and are not required on-campus.
100% OL	Students will complete their studies through UniSA Online. No on-campus attendance is required.
#	Students will be based at the James Morrison Academy of Music in Mount Gambier.
^	Also available at Mount Gambier and Whyalla.
*	Also available at Mount Gambier.
~	Also available in Ceduna, Mount Gambier, Port Lincoln and Whyalla.
°	Also available through Open Universities Australia (OUA).

### Notes

- #1 SACE Stage 2 Mathematical Methods
- #2 SACE Stage 2 Physics
- #3 SACE Stage 2 Biology, SACE Stage 2 Chemistry, SACE Stage 2 Physics
- #4 SACE Stage 2 Biology
- #5 SACE Stage 2 Chemistry
- #6 Refer to program schedule and notes at [unisa.edu.au/study](http://unisa.edu.au/study)
- #7 Certificate IV when accompanied with a current Nurse Practising Certificate.
- #8 Applicants who have completed a VET award at diploma level or who have studied at a higher education level for more than two years will not be considered for admission.
- #9 No formal minimum entry requirements apply. However, applicants who have not completed SACE or a Certificate III must be 18 years of age or over before:
  - February 1st for Study Period 2; or
  - July 1st for Study Period 5 (mid-year)
- #10 No cut off rank is shown because the course/program has made no offers in its Year 12 subquota to date.
- #11 No formal minimum requirements apply. Applicants must identify as being of Aboriginal or Torres Strait Islander descent.
- #12 Enrolled Nurse Certificate or Diploma in Nursing—both with current Practising Certificate.
- #13 Minimum grade of C- or higher in at least two of the following SACE Stage 2 subjects: Biology; Chemistry; Earth and Environmental Science; Mathematical Methods; or Physics.

## IMPORTANT INFORMATION

### Adjustment factors

UniSA offers adjustment factors (formerly known as bonus points) to high school students applying for entry. Additional points are based on set equity factors and/or subject choices.

To learn more, visit [unisa.edu.au/adjustmentfactors](http://unisa.edu.au/adjustmentfactors)

### Guaranteed entry

UniSA offers guaranteed entry into many degrees. If your Selection Rank (ATAR) or VET award meets the UniSA Guaranteed Entry score, you have met the prerequisites and any specific entry requirements, and you have listed the degree as your first preference, you are guaranteed an offer.

For more information, visit [unisa.edu.au/guaranteed](http://unisa.edu.au/guaranteed)

Keep up to date with  
our new degrees  
throughout the year at  
[unisa.edu.au/new](http://unisa.edu.au/new)



**University of  
South Australia**

***unisa.edu.au***

Telephone: (08) 8302 2376

Make an enquiry: *unisa.edu.au/enquire*



***youtube.com/unisouthaustralia***



***facebook.com/UniSA***



***twitter.com/UniversitySA***



***instagram.com/universitysa***

The information provided in this publication is for general information only, and the University of South Australia makes no representation about the content, suitability, accuracy or completeness of this information for any purpose. It is provided "as is" without express or implied warranty.

Information correct at time of printing (July 2018)

CRICOS provider number OO121B

For information specific to international students, please visit *unisa.edu.au/international*

***Australia's University of Enterprise***