



How to Create a True or False UniSAnet Quiz

- What is a UniSAnet true or false quiz?
- Building the quiz
- Creating a true or false quiz

Introduction

This teaching guide will take you through the process of creating a UniSAnet true or false quiz. You are provided with information in a concise bullet point format and each step is supported by images of the object creator screen sequence.

By the time you have completed this teaching guide, you should be able to:

- prepare material for a true or false quiz
- create a quiz object
- add questions
- add answers
- add feedback on answers
- set availability of quiz sections
- set options for selecting questions
- check the completed quiz.

At the end of the teaching guide you will find information on how to obtain help if you are having difficulty creating a true or false quiz.

What is a UniSAnet true or false quiz?

The true or false quiz is formative in nature. There is no scoring available to the lecturer, only the student. It presents a statement to the learner who must select whether it is true or false. Other options are available including “Yes/No” and “Agree/Disagree”. Positive feedback can be given if the answer selection was correct or advice on possible action if the selection was incorrect.

Creating a true of false quiz

Preparation

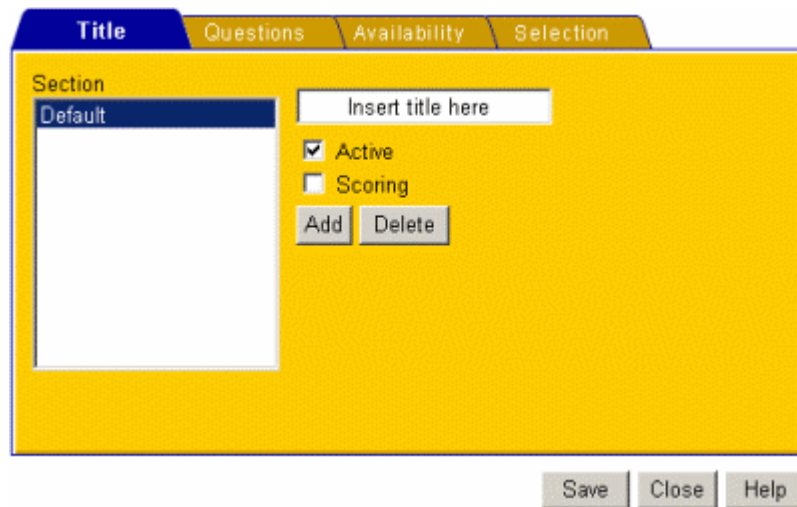
When creating a true or false quiz you need to:

- write a sentence or statement
- decide whether the statement is true or false
- develop feedback for a correct and incorrect selection.
 - This allows you to make the quiz a formative learning experience by providing information about why the answer was right or wrong and where to find additional information.

Creating the quiz

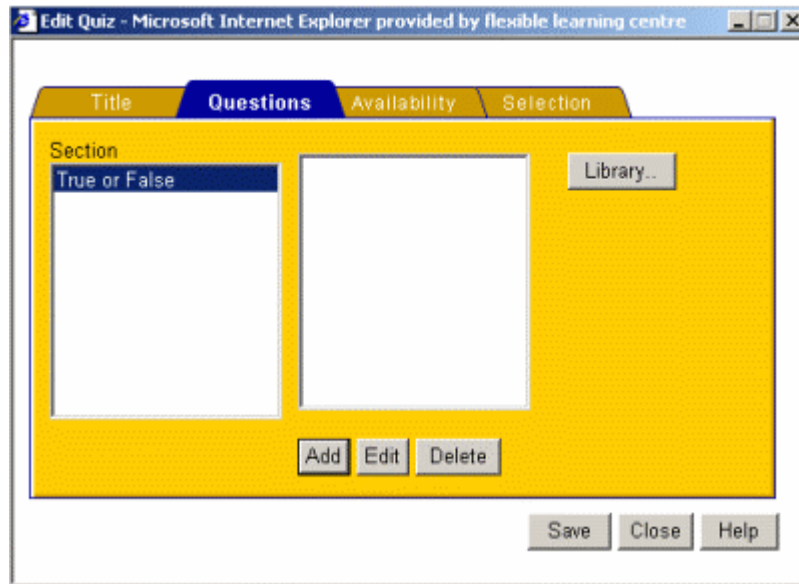
You can create a quiz through the UniSAnet **Content object** screen.

- Click the **Learning objects** tab.
- Click **Quiz**.
- Enter the name of your quiz..
- Click the **Create** button.
- Select the **Edit existing** tab and select the quiz you have just created from the drop-down menu.
- Click the **Edit** button and the following screen will appear.



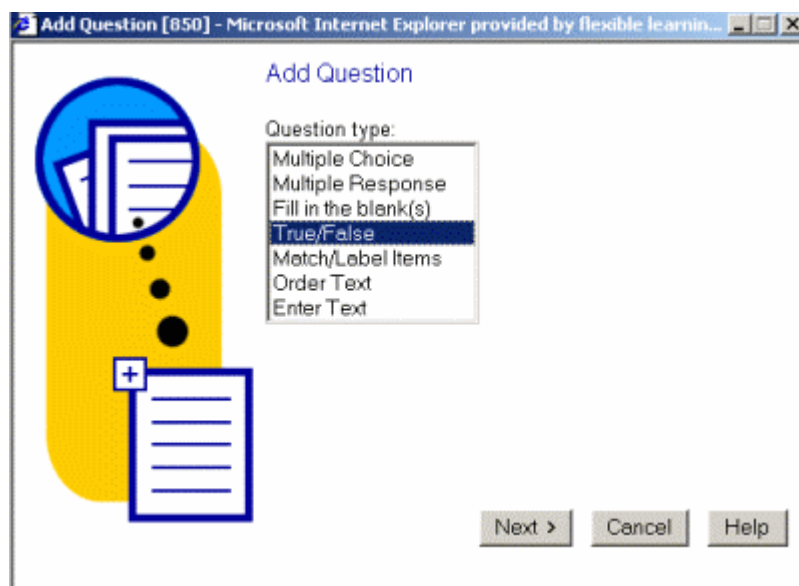
The screenshot shows a web interface with a yellow background. At the top, there are four tabs: 'Title' (selected), 'Questions', 'Availability', and 'Selection'. Below the tabs, there is a 'Section' list on the left containing 'Default'. To the right of the list is a text input field with the placeholder text 'Insert title here'. Below the input field are two checkboxes: 'Active' (checked) and 'Scoring' (unchecked). Below the checkboxes are two buttons: 'Add' and 'Delete'. At the bottom right of the interface are three buttons: 'Save', 'Close', and 'Help'.

- Each quiz can contain several sections within the one quiz.
- Insert your quiz section title in the box in the top center of the screen by typing over the **Default** text which is shown as “Insert title here” in the image above.
- If you wish to add more sections click **Add** and type your title in the box.
- Highlight each section title. For each one you will need to check the **Active** box if you want a link to appear on your course homepage.
- Checking the **Scoring** box is not necessary as this option is not yet functioning.
- Click **Save** and the screen will move to the **Questions** tab.

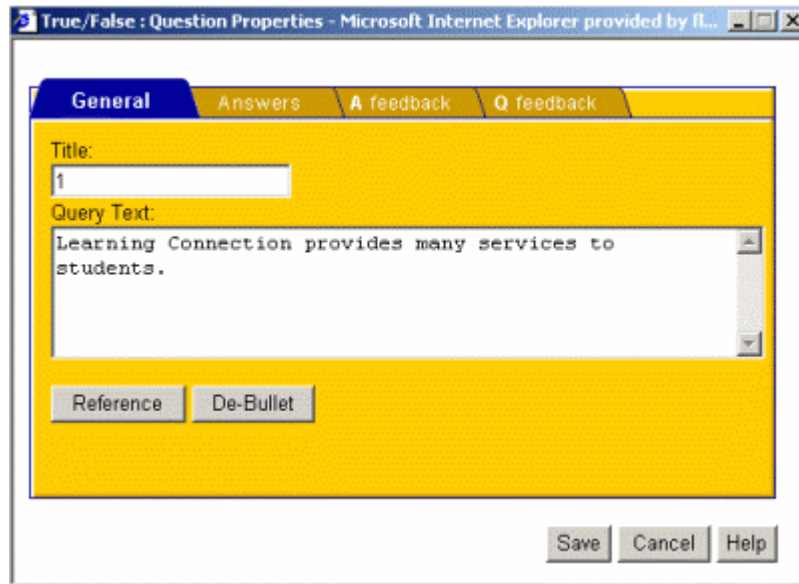


Add questions

- Highlight the section to which you want to add questions.
- Click the **Add** button to add a question to the quiz. The following screen will appear.



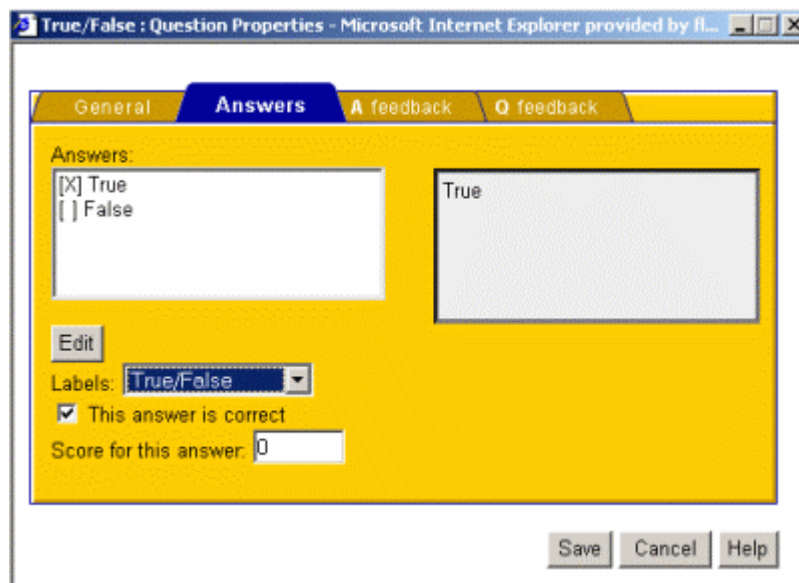
- Highlight **True/False** and click the **Next** button. The following screen will appear.



- Enter the **Title** of your question. It is necessary to have a title, even as simple as “Q1” or “1” because the title will appear on the quiz summary screen advising the learner which questions were answered correctly and incorrectly. A default “[]” will appear in the question column if no title is given. A short phrase that encompasses the principle of the question is most helpful. When you begin managing question libraries you appreciate more descriptive names as this is the only way you have of telling one question from another.
- Type the question/statement in the **Query Text** box.

Add answers

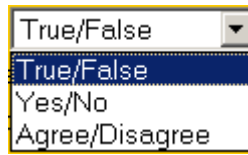
Click the **answers** tab. The following screen will appear.



- Highlight the **correct answer**.
- Check **This answer is correct**.

Selecting alternative labels

- Click the arrow on **Labels** and a drop down box will appear as indicated in the following image.



- **Highlight** and **click** the label option you prefer.

Feedback

It is important to offer feedback to the learner. Positive if the correct answer was selected, and guidance if not. Author-generated feedback in UniSAnet quizzes can be very powerful as it is contextually relevant for the learner. If you do not provide author-generated feedback then UniSAnet will present some default comments to the learner, which may not always be suitable for your question.

Author-generated feedback can be offered in two ways:

- **Answer feedback**, which allows you to provide feedback on each of the answer options.
- **Question feedback**, which allows you to provide overall feedback on correct and incorrect answer options.

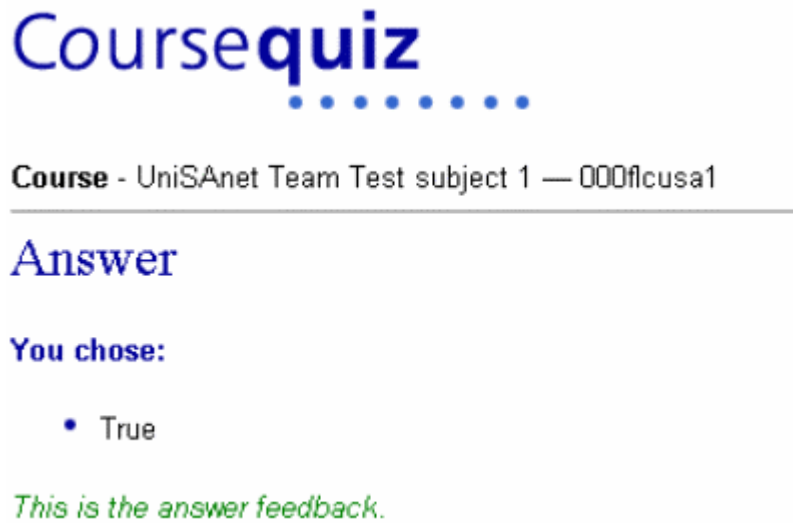
It is only necessary to provide one form of author-generated feedback. Providing both forms can become confusing to the learner, particularly when it is combined with default UniSAnet feedback.

Feedback should be meaningful to the learner and assist cognitive processes. You can be creative with your feedback. Why not provide a hyperlink embedded in the feedback that will take the learner to appropriate web resources?

The true or false quiz generates automatic answer feedback as shown in the following image. The default response will not make any sense to the learner so you will need to add appropriate answer feedback to override the default. It is therefore not necessary to create question feedback.

Add answer feedback

The true or false quiz displays feedback as shown in the following image.



Feedback must be entered into the wizard for all answer options, correct and incorrect. If you don't enter feedback the wizard will default to the following response.

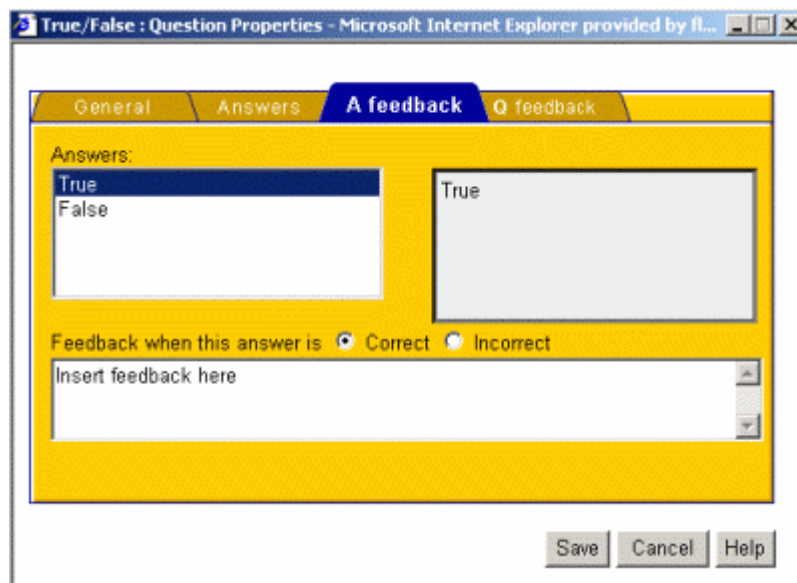
You chose:

- False

Incorrect. The possible correct answers are:

- True

This response doesn't make sense with a true or false question and certainly won't assist learning.



- Click the **A feedback** tab.
- **Highlight** the answer option.
- Check **Correct** and enter the feedback for a correct answer or
 - check **Incorrect** and enter the feedback for an incorrect answer

Repeat process for all answers.

Set quiz section availability

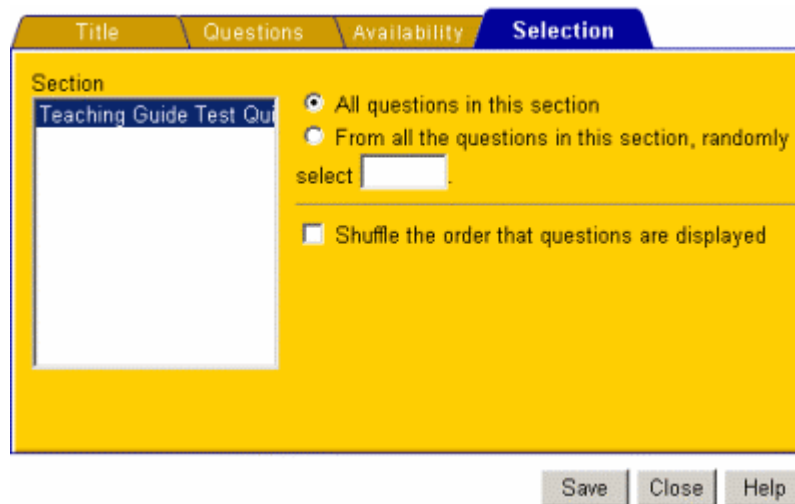
You have already set the availability of the overall quiz at the beginning of the creation process. You now have the option to set availability of various sections within your quiz. You can determine the date and time your quiz section becomes available and unavailable. Both options do not need to be selected. You can set an available date and time without setting the unavailable option.

If you wish to activate this feature you will need to:

- Click **Enabled** in the **Available from** section and enter the date and time at which the quiz section is to become available.
- Click **Enabled** in the **Unavailable from** section and enter the date and time at which the quiz section is to become unavailable

Set question selection options

You don't have to use all the questions in a selection. This gives you the flexibility to offer a variety of questions to different learner groups.



- Click the **Selection** tab.
- Highlight the selection for which you are setting the parameters.
- You have the option to **click** and check:
 - all questions in this selection
 - specify a number of questions that will be selected at random
 - shuffle the order that questions are displayed. This is a useful learning tool if the learner is making several attempts at a quiz.
- Click **Save** or your work will be lost.

Check the completed quiz

It is important to check the quiz to ensure that it is functioning correctly from the learner's perspective. To view the quiz in the UniSAnet Object creator:

- Click **View quiz** in the left hand menu bar.
- When the quiz screen appears click **Start quiz**.

Alternatively, if the quiz has been activated previously it can be viewed by:

- navigating to the course home page
- scrolling the navigation frame to **Learning resources specific to this course**
- clicking the quiz name.

Run through the quiz completely selecting a variety of correct and incorrect answers. Check all functionality to ensure that everything is working correctly for the learner. You can use the web browser back button to select different answers in the same question.

To make changes to any part of the quiz while reviewing it, click the **Change button** on the bottom of the quiz question screen. This will activate the quiz wizard through which you can make your edits. You can also add new questions to an existing quiz while reviewing it by clicking on the **Change** button on the quiz start page.

Although not covered in this guide, it is possible to add images to quizzes in the question and answer areas. The *How to: Create a Match Label Items UniSAnet Quiz* guide includes instructions for this.

Getting Help

It does take time and practice to become proficient at using the UniSAnet object creator to create a true or false quiz. This teaching guide is the starting point. If you are having difficulty and need additional assistance, remember that your campus **Online Adviser** is only a phone call away. He or she will provide guidance in how to create a quiz or any other aspect of the UniSAnet authoring environment.

Teaching guides detailing how to create other quiz types can be found at the Teaching and Learning Website

Teaching guides

This is one of a series of guides on teaching and learning at the University of South Australia prepared by staff from Learning Connection. Other guides can be accessed at <http://www.unisanet.unisa.edu.au/learningconnection/teachg/index.htm>

For further information

- Talk to your Dean: Teaching and Learning
 - Visit Learning Connection on your campus or online at <http://www.unisanet.unisa.edu.au/learningconnection/staff.htm>
-