



How to Create a Multiple Response UniSAnet Quiz

- What is a UniSAnet multiple response quiz?
- Creating a multiple response quiz
- Building the quiz

Introduction

This teaching guide will take you through the process of creating a UniSAnet multiple response quiz. You are provided with information in a concise bullet point format and each step is supported by images of the object creator screen sequence.

By the time you have completed this teaching guide, you should be able to:

- prepare material for a multiple response quiz
- create a quiz object
- add questions
- add answers
- add feedback on answers
- add feedback on the question outcomes
- set availability of quiz sections
- set options for selecting questions
- check the completed quiz.

At the end of the teaching guide you will find information on how to obtain help if you are having difficulty creating a multiple response quiz.

What is a UniSAnet multiple response quiz?

The multiple response quiz is formative in nature. There is no scoring available to the lecturer, only the student. It poses a question to which several answer responses are possible. The learner selects the appropriate answer or combination of answers and clicks a button to check the validity of his or her selection. The learner is provided with feedback on each of the question options including:

- why the answer option was correct (if the learner selected it)
- why the answer option would have been the correct selection (if the learner didn't select it)
- why the answer option was an incorrect selection.

In other words, the learner is given a complete overview of why answer options were correct or incorrect. The learner can be given positive feedback if the answer selection was correct or advice on possible action if the selection was incorrect. Feedback can also be given on the overall outcome of the selected question responses.

Creating a multiple response quiz

Preparation

A multiple response quiz allows the learner to select more than one answer.

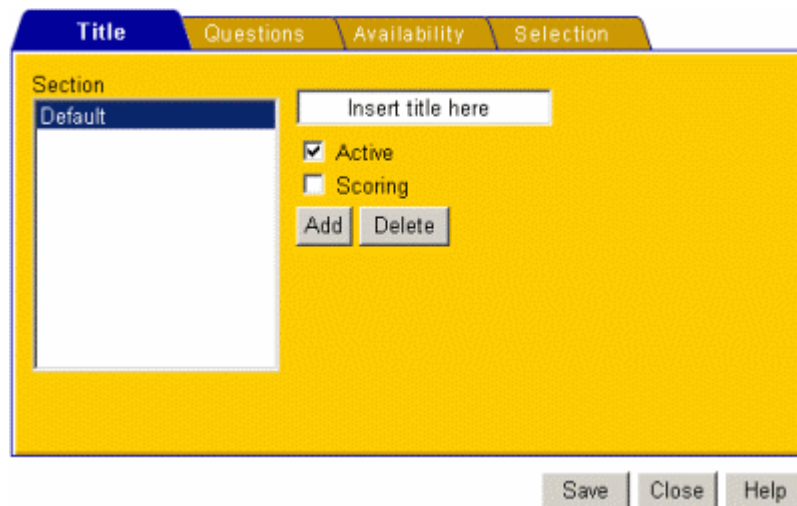
When creating a multiple response question you need to write:

- the question
- answer options
- feedback on each answer
 - This allows you to make the quiz a formative learning experience by providing information about why the answers were right or wrong and where to find additional information.
- feedback on the question overall
 - What feedback do you want to give the learner in relation to their overall response to the question?

Creating the quiz

You can create a quiz through the UniSAnet **Content object** screen.

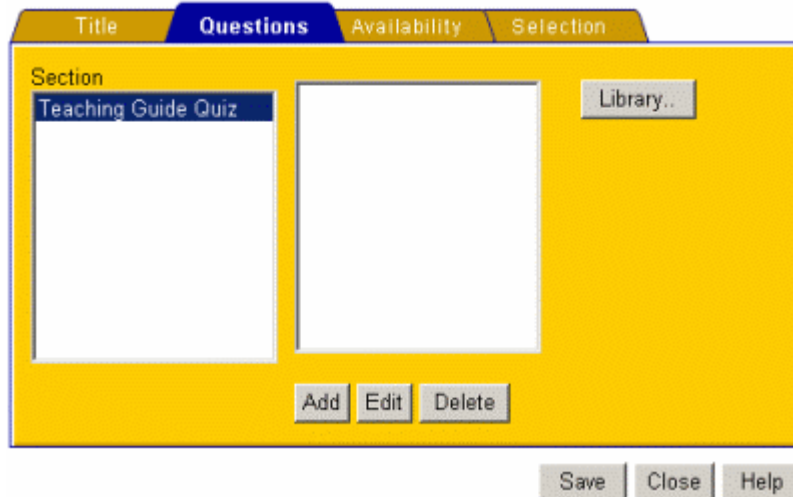
- Click the **Learning objects** tab.
- Click **Quiz**.
- Enter the name of your quiz..
- Click the **Create** button.
- Select the **Edit existing** tab and select the quiz you have just created from the drop-down menu.
- Click the **Edit** button and the following screen will appear.



The screenshot shows a software interface with a yellow background. At the top, there are four tabs: 'Title' (selected), 'Questions', 'Availability', and 'Selection'. Below the tabs, there is a 'Section' dropdown menu currently showing 'Default'. To the right of the dropdown is a text input field containing the placeholder text 'Insert title here'. Below the input field are two checkboxes: 'Active' (checked) and 'Scoring' (unchecked). Below the checkboxes are two buttons: 'Add' and 'Delete'. At the bottom of the screen, there are three buttons: 'Save', 'Close', and 'Help'.

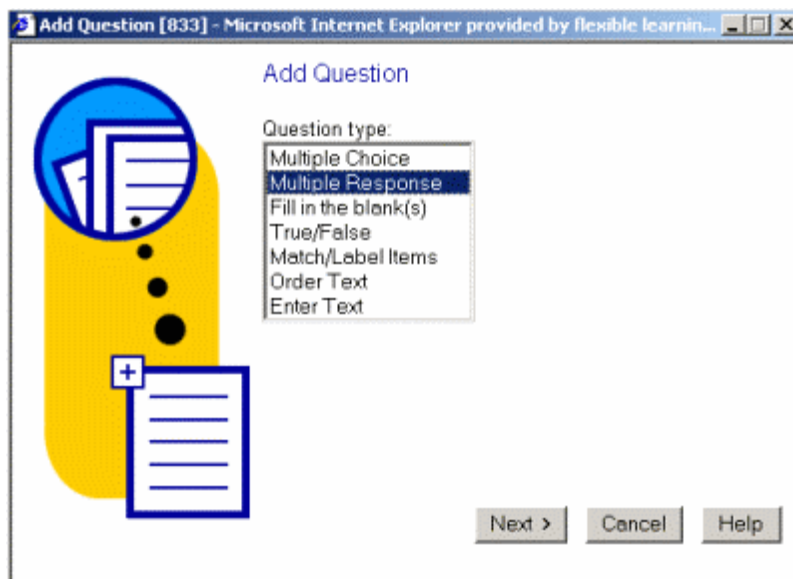
- Each quiz can contain several sections within the one quiz.
- Insert your quiz section title in the box in the top center of the screen by typing over the **Default** text which is shown as “Insert title here” in the image above.
- If you wish to add more sections click **Add** and type your title in the box.

- Highlight each section title. For each one you will need to check the **Active** box if you want a link to appear on your course homepage.
- Checking the **Scoring** box is not necessary as this option is not yet functioning.
- Click **Save** and the screen will move to the **Questions** tab.

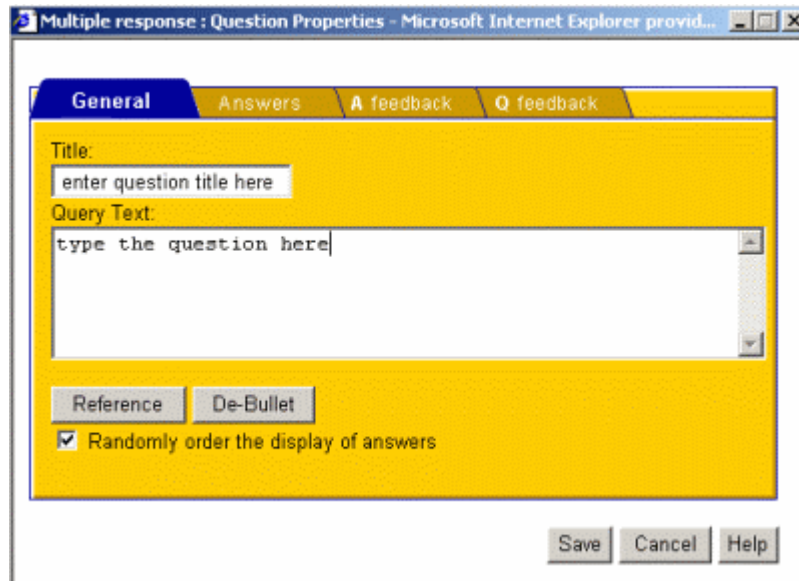


Add questions

- Highlight the section to which you want to add questions.
- Click the **Add** button to add a question to the quiz. The following screen will appear.



- Highlight **Multiple Response** and click the **Next** button. The following screen will appear.



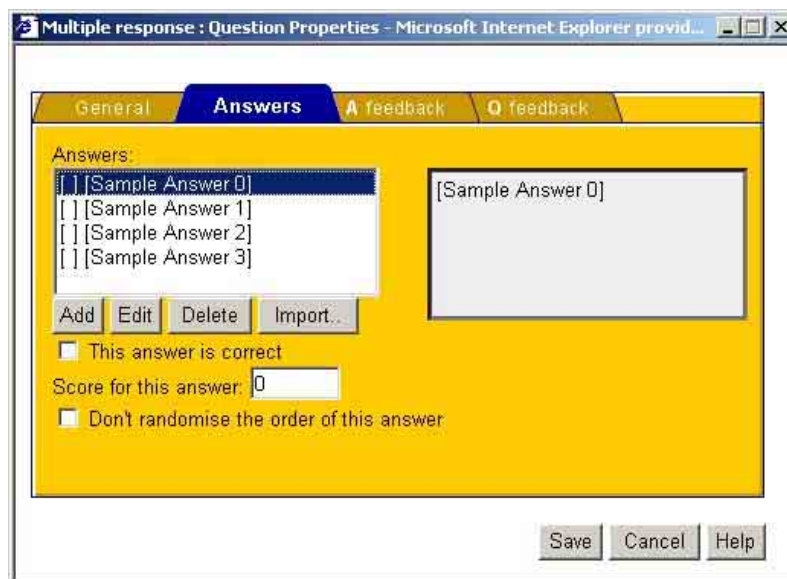
- Enter the **Title** of your question.

It is necessary to add a title because the wizard may use this label when constructing feedback. A title as simple as “Question 1” or “Q1” will suffice, but a short phrase that encompasses the principle of the question is most helpful. When you begin managing question libraries you appreciate more descriptive names as this is the only way you have of telling one question from another.

- Type the question in the **Query Text** box.

Add answer options

- Click the **Answers** tab.

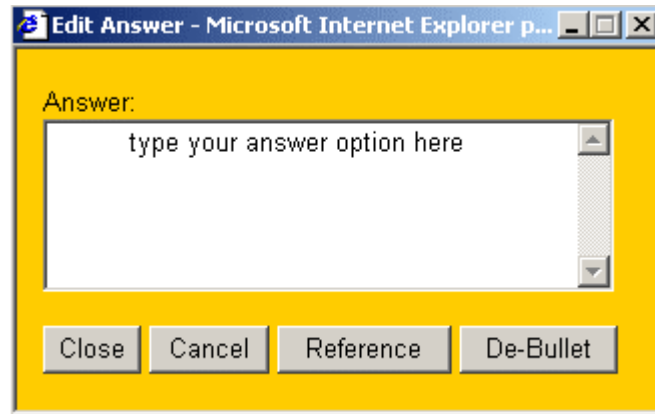


Four sample answers will appear in the Answers box on the left.

- Click **Add** to insert answers over and above four.

We will assume that four answers are sufficient and use this for the following example.

- Highlight the first answer and click the **Edit** button.

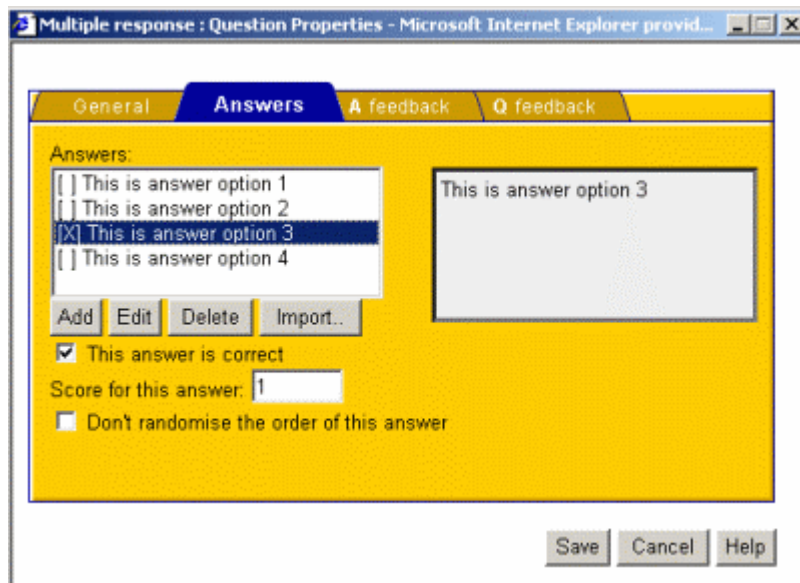


- Type your answer option in the new small **Answer** box and click the **Close** button.

Your first answer option has been saved.

- Repeat the process for all answer options.

When you have created all the answers your screen should look something like the following image.



- Identify the correct answer(s) by highlighting it in the **answers** box and checking **This answer is correct**.

If the appearance order of the answer options is important to the design or the question, you will need to select each answer option individually and check the box next to **Don't randomise the order of this answer**.

Feedback

It is important to offer feedback to the learner. Positive if the correct answer was selected, and guidance if not. Author-generated feedback in UniSAnet quizzes can be very powerful as it is contextually relevant for the learner. If you do not provide author-generated feedback then UniSAnet will present some default comments to the learner, which may not always be suitable for your question.

Author-generated feedback can be offered in two ways:

- **Answer feedback**, which allows you to provide feedback on each of the answer options.
- **Question feedback**, which allows you to provide overall feedback on correct and incorrect answer options.

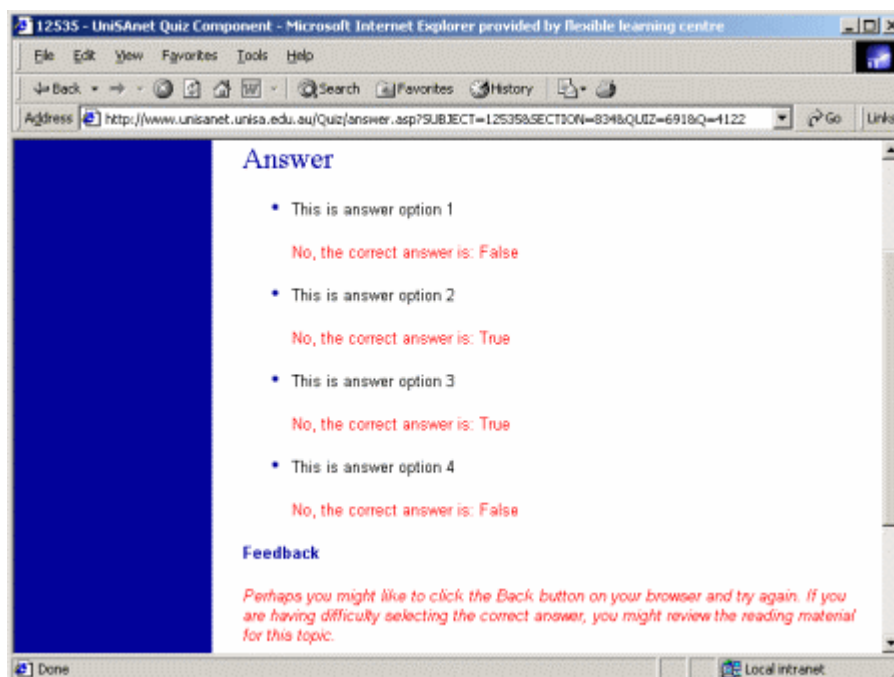
It is only necessary to provide one form of author-generated feedback. Providing both forms can become confusing to the learner, particularly when it is combined with default UniSAnet feedback.

Feedback should be meaningful to the learner and assist cognitive processes. You can be creative with your feedback. Why not provide a hyperlink embedded in the feedback that will take the learner to appropriate web resources?

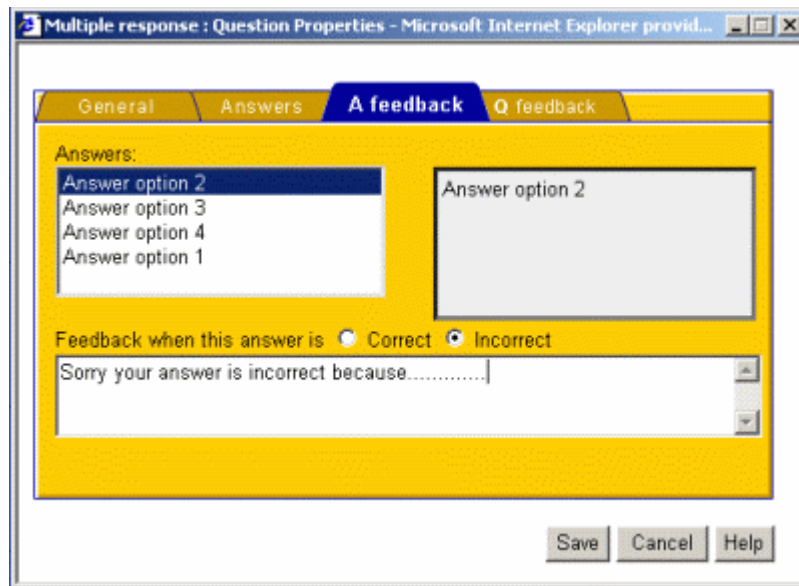
The multiple response quiz generates automatic answer feedback as shown in the following image. The default response will not make any sense to the learner so you will need to add appropriate answer feedback to override the default.

Add answer feedback

The multiple response quiz displays feedback on all answers in the one screen as shown in the following image.



Feedback must be entered into the wizard for all answer options.



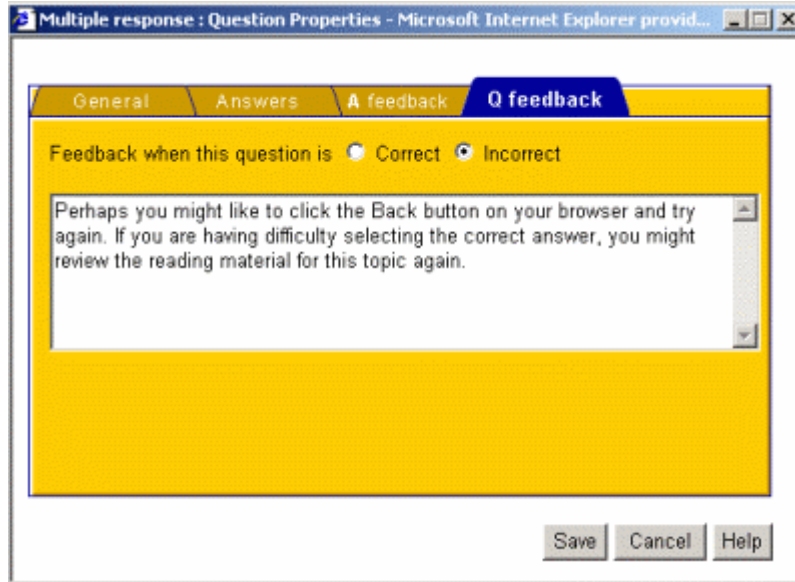
- **Highlight** the answer option.
- Check **Correct** and enter the feedback for a correct answer.
- Check **Incorrect** and enter the feedback for an incorrect answer.

Correct and incorrect answer feedback must be entered for each answer option. Since feedback is presented on all answer options **at once** when the learner clicks the **check** button it is necessary to:

- provide feedback on why an answer was correct (if it was selected) or why it would have been a correct choice (if it was not selected)
- provide feedback on why an answer was incorrect (if it was selected) or why it would not have been a good choice (if it was not selected).

Add question feedback

Because there are so many levels of answer feedback with a multiple response quiz, question feedback can be useful in consolidating overall feedback on the question.

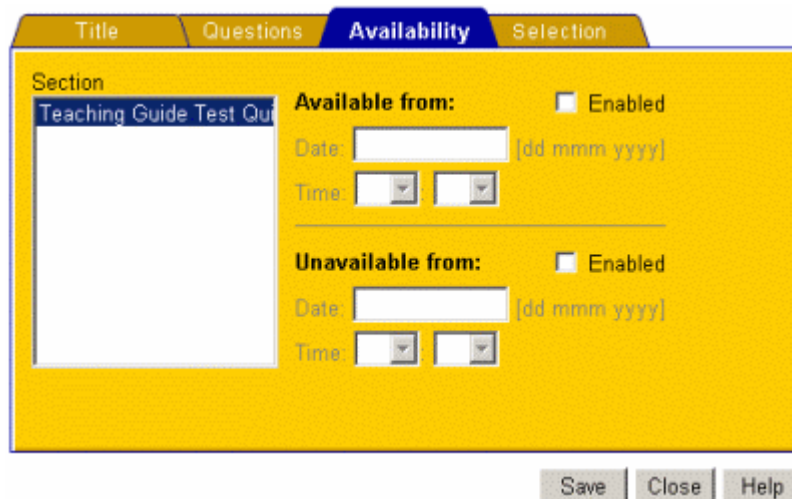


- Check **Incorrect** and type your feedback for an incorrect overall response to the question.
- Check **Correct** and type your feedback for a correct overall response to the question.
- **Click Save when finished or your work will be lost**

The questions wizard will close and your **Quiz object creator** screen will be visible.

Set quiz section availability

You have already set the availability of the overall quiz at the beginning of the creation process. You now have the option to set availability of various sections within your quiz. You can determine the date and time your quiz section becomes available and unavailable. Both options do not need to be selected. You can set an available date and time without setting the unavailable option.

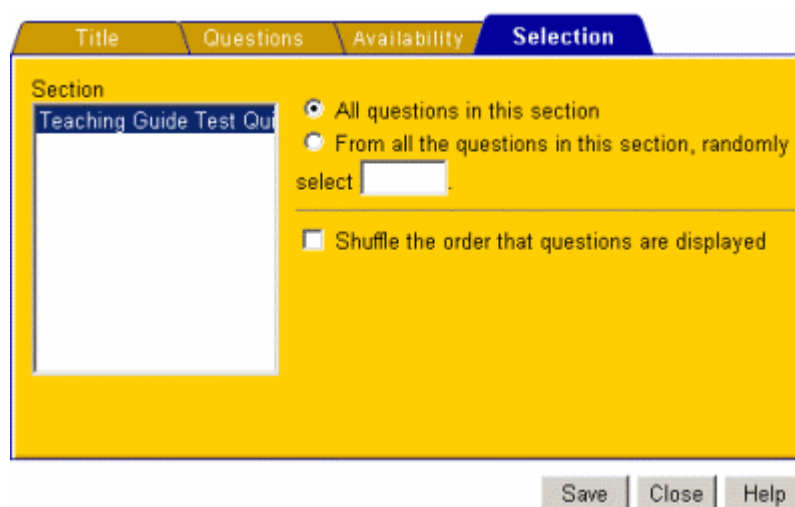


If you wish to activate this feature you will need to:

- Click **Enabled** in the **Available from** section and enter the date and time at which the quiz section is to become available.
- Click **Enabled** in the **Unavailable from** section and enter the date and time at which the quiz section is to become unavailable

Set question selection options

You don't have to use all the questions in a selection. This gives you the flexibility to offer a variety of questions to different learner groups.



- Click the **Selection** tab.
- Highlight the selection for which you are setting the parameters.
- You have the option to **click** and:
 - select all questions in this selection
 - specify a number of questions that will be selected at random
 - shuffle the order that questions are displayed. This is a useful learning tool if the learner is making several attempts at a quiz.
- click **Save** or your work will be lost.

Check the completed quiz

It is important to check the quiz to ensure that it is functioning correctly from the learner's perspective. To view the quiz in the UniSAnet Object creator:

- Click **View quiz** in the left hand menu bar.
- When the quiz screen appears click **Start quiz**.

Alternatively, if the quiz has been activated previously it can be viewed by:

- navigating to the course home page

- scrolling the navigation frame to **Learning resources specific to this course**
- clicking the quiz name.

Run through the quiz completely selecting a variety of correct and incorrect answers. Check all functionality to ensure that everything is working correctly for the learner. You can use the web browser back button to select different answers in the same question.

To make changes to any part of the quiz while reviewing it, click the **Change button** on the bottom of the quiz question screen. This will activate the quiz wizard through which you can make your edits. You can also add new questions to an existing quiz while reviewing it by clicking on the **Change** button on the quiz start page.

Although not covered in this guide, it is possible to add images to quizzes in the question and answer areas. The *How to: Create a Match Label Items UniSAnet Quiz* guide includes instructions for this.

Getting Help

It does take time and practice to become proficient at using the UniSAnet object creator to create a multiple response quiz. This teaching guide is the starting point. If you are having difficulty and need additional assistance, remember that your campus **Online Adviser** is only a phone call away. He or she will be happy to provide guidance in how to create a quiz or any other aspect of the UniSAnet authoring environment.

Teaching guides outlining how to create other quiz types can be found at Teaching and Learning Website.

<i>Teaching guides</i>	This is one of a series of guides on teaching and learning at the University of South Australia prepared by staff from Learning Connection. Other guides can be accessed at http://www.unisanet.unisa.edu.au/learningconnection/teachg/index.htm
<i>For further information</i>	<ul style="list-style-type: none"> • Talk to your Dean: Teaching and Learning • Visit Learning Connection on your campus or online at http://www.unisanet.unisa.edu.au/learningconnection/staff.htm
