

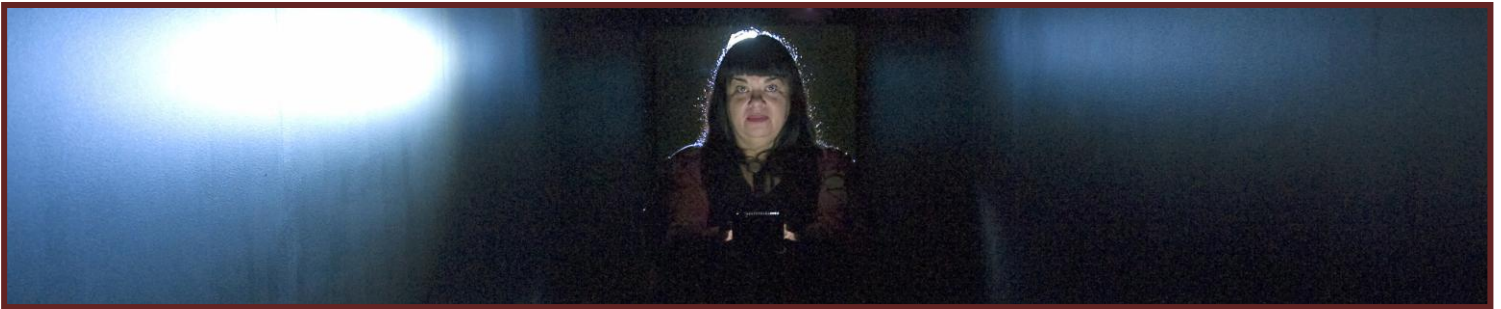


ARTSCAPE.

# Connected by Light

ABC1 Tuesday 22 September 2009 at 10.00pm

ABC2 Sunday 01 November 2009 at 10.00pm



**CONNECTED BY LIGHT** is a visually rich documentary that follows internationally acclaimed Australian media-artist Lynette Wallworth, as she creates a new work *Duality of Light*.

Wallworth's work is storming the traditional boundaries between art galleries and film festivals, and she is being invited to exhibit her installations at major festivals around the world. At the 2009 Sundance Film Festival she was invited to give the Festival's founder Robert Redford, a personal tour of *Evolution of Fearlessness*. While world renowned, her work is barely known in Australia and she is only starting to be recognised here as a major new voice in contemporary art.

Specialising in the development of extremely technical installations, Wallworth creates interplay between the moving image, sound, space, light and the viewer. Her work fascinates the cinema world because this art offers the viewer an interactive and immersive experience. Simply put, she is able to do things with narrative, moving images and viewer participation that cinema cannot.

At the heart of **CONNECTED BY LIGHT** is the creation of Wallworth's latest work *Duality of Light*. In a bold move, Adelaide Film Festival director Katrina Sedgwick commissioned Wallworth to create this work for the 2009 Festival. Sedgwick sees Wallworth's work as having a relevant position within the Festival given the splintering of the cinema 'screen' into a vast number of new spaces. *Duality of Light* will conclude the themes of a trilogy begun by *Invisible By Night* (2004) and *Evolution of Fearlessness* (2006).

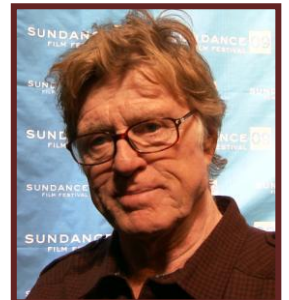
*Evolution of Fearlessness* had its Australian premiere at the 2008 Melbourne Festival of Arts. This work involves the life-sized projection of 11 women who are political refugees and survivors of war, genocide and torture. Viewers are invited to come face to face with each woman, and touch the screen in a moment of transformative interaction. **CONNECTED BY LIGHT** follows two of the women, Ayen Kuol (Sudanese refugee) and Eva Marks (Viennese Holocaust survivor), to the opening of this exhibition, where all 11 women meet and see the work for the first time.

**CONNECTED BY LIGHT** culminates with a red-carpet world premiere of *Duality of Light* where the installation is revealed in its entirety for the first time, launched by Australian film director Rolf De Heer.

## Production details:

**CONNECTED BY LIGHT** is produced by Plexus Films in association with ABC TV. Director: Matthew Bate; Producer: Viron Papadopoulos  
ABC TV Head of Arts and Entertainment: Amanda Duthie; Executive Producer: Megan Harding

**For further information or interviews contact:** Amanda Werner, ABC TV Publicity  
Ph: (08) 8343 4214 or Mob: 0412 007 273 Email: [werner.amanda@abc.net.au](mailto:werner.amanda@abc.net.au)



Robert Redford at the 2009 Sundance Film Festival



*Evolution of Fearlessness* (2006)



*Hold: Vessel 1 & 2* (2001-07)

