



University of
South Australia

Barbara Hardy Centre for Sustainable Urban Environments

unisa.edu.au/barbarahardy





A Research Centre focussed on the sustainability of cities, the conservation of biodiversity and the maintenance of the natural processes that sustain life. Our work is underpinned by community participation and education.



Rationale for the Barbara Hardy Centre

Over half of the world's population live in cities and both population and urbanisation are increasing. Increasing populations and a changing climate in a world of limited resources are challenging the way we interact with the environment. Therefore, we need to develop a general framework of knowledge about how cities function as environmental entities, and how we can build and manage sustainable cities in a changing world. In response, both government and industry have new strategic directions which provide opportunities for research and the delivery of solutions to the complex issues surrounding the sustainability of cities.

Centre Goals

The Barbara Hardy Centre has developed a significant profile through successful community outreach, research and education projects, and partnerships with government and industry. The Centre will continue to grow, particularly through an increase in the number of researchers, research students, research projects and outputs, and in the engagement of the wider community.

A diversified funding model has been developed that will ensure the Centre is able to increase both its research outputs and community engagement. Funding will be derived from research grants, the publication of books, consultancy services, and through partnerships with external organisations. The Barbara Hardy Centre has two key areas of interest that will underpin the Centre's growth: the Environment and Education.



Our Mission:

The Barbara Hardy Centre will develop sustainable solutions to complex issues of natural and built environments, and promote their application in urban communities, through multidisciplinary and collaborative approaches.



Research Directions

Environment: The Centre will develop research projects that increase our understanding of the urban environment and, in particular, how the form and function of urban areas can be improved by the incorporation of natural features and processes. Directed by our research themes, this endeavour will require investigations into the natural and built landscape, the social fabric of cities and the use and development of appropriate technologies.

Education: Research at the Centre will be strengthened by an investment in community education and active involvement of the wider community. This investment will be realised in three ways. First, through the development of the teaching-research nexus, researchers will engage students at Primary, Secondary and Tertiary levels. Second, research will focus on the pedagogy of education within the fields of our research themes. Third, research partnerships with external organisations and the wider community will be mutually beneficial in terms of both research and education.

Research Themes:

1. Conservation of Ecosystems and Landscapes

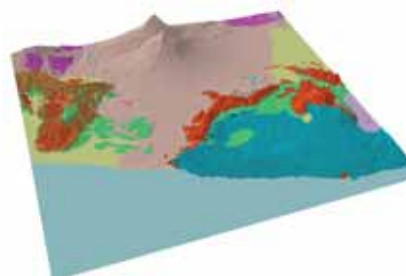
Researching the form and function of urban ecosystems and educating the wider community about the importance of natural features and systems.

2. Mapping and Modelling Landscapes

Researching and applying Geographic Information Systems, Information Technologies, and mathematical and statistical procedures to improve our understanding of urban form and function.

3. People and the Environment

Researching the interactions between people and urban ecosystems and involving the wider community in research activities.



Profile of the Director

Chris Daniels is Professor of Urban Ecology at the University of South Australia. Chris has been a prolific scientist and author, having edited 4 books and contributed to more than 150 scientific publications. He has been published on issues regarding the natural and built environments, and has an abiding interest in reptiles, particularly lizards. Chris is also an award-winning science communicator. He has regular sessions on 891 ABC Radio where he discusses a range of science and environmental topics.



University of
South Australia

Barbara Hardy Centre
for Sustainable Urban Environments

Contact the Barbara Hardy Centre

Chris Daniels
Professor of Urban Ecology

School of Natural and Built Environments
BJ3-17
City East Campus
University of South Australia

Phone: +61 8 8302 2317

Email: Chris.Daniels@unisa.edu.au

Philip Roetman
Barbara Hardy Centre Research Assistant

School of Natural and Built Environments
BJ3-61
City East Campus
University of South Australia

Phone: +61 8 8302 1081

Email: Philip.Roetman@unisa.edu.au

For more information

Visit our website at:

www.unisa.edu.au/barbarahardy



Photography by John Hodgson

CRICOS Provider Number 00121B

Our patron

Barbara Hardy AO

Barbara Hardy has been working in the environment field in a voluntary capacity since the early 1970s. She has been a Commissioner of the Australian Heritage Commission, President of the National Parks Foundation of South Australia (now the Nature Foundation SA), Founding President of the Investigator Science and Technology Centre, and Chairman of the South Australian Landcare Committee amongst a number of other roles.

Barbara Hardy was appointed an Officer of the General Division of the Order of Australia (AO) in 1987, an Honorary Doctorate of the Flinders University in 1993, as well as an Advance Australia Award 1991, SA Great Award 1992, Institution of Engineers Medal 1992, ABC Eureka Award for the Advancement of Science 1994, and was named South Australian Citizen of the Year in 1996. She is now a Companion of the Institution of Engineers Australia, and a Fellow of the Australian Institute of Energy where she is a member of the Hydrogen Division.

In October 2001 she was appointed as the Member from Australia in the Asia-Pacific Forum for Environment and Development (APFED), a major international project initiated and funded by the Japanese Ministry for Environment. APFED "aims to propose a model of equitable and sustainable development for Asia and the Pacific Region". Barbara has now stood down as the APFED Member from Australia, as of July 2006, and her place has been taken by Greg Bourne, CEO of WWF Australia.

In 2009, Barbara became patron of UniSA's Centre for Sustainable Urban Environments: The Barbara Hardy Centre.

Barbara Hardy's principal interests are in ecologically sustainable development, biodiversity conservation, environmental valuation, renewable energy production and use, and in business and industrial matters especially as they affect the environment within which we all live.