

# Recommended configuration for Outlook 2007 Cache Mode & Microsoft Desktop Search using Group Policy Objects

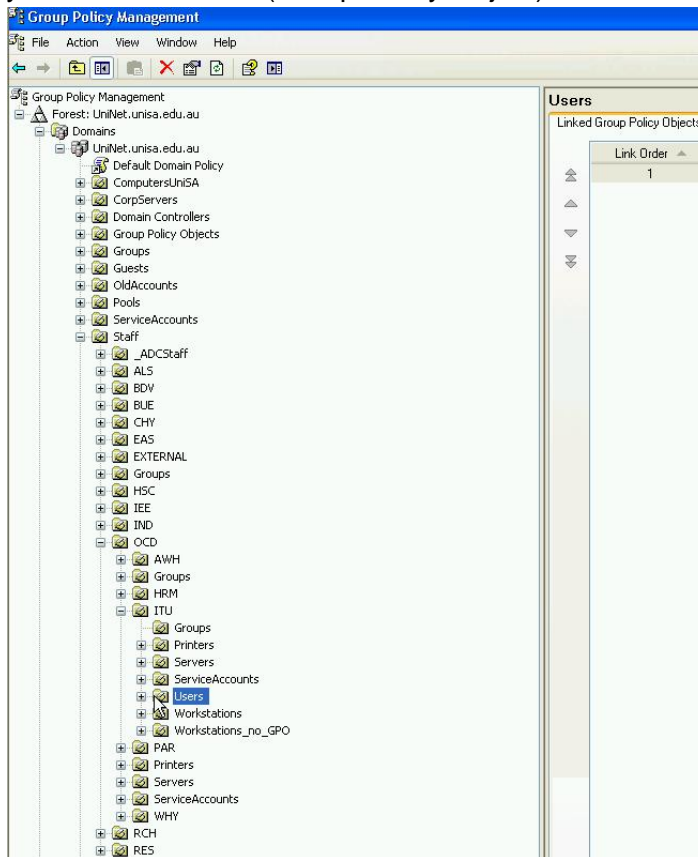
## Instructions

### Table of Contents

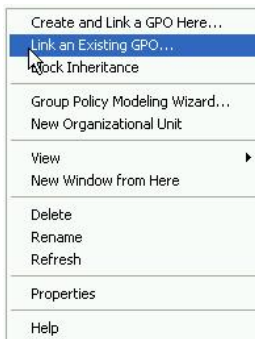
Linking the UniSA-Users-OutlookCachedModeOn and UniSA-Users-Outlook03CachedModeOn GPO.....	2
Linking the UniSA-Workstation-MSDesktopSearch-OfflineOnly GPO .....	5
Linking the UniSA-Workstation-DisableExchangeCachedMode GPO.....	6

## Linking the UniSA-Users-OutlookCachedModeOn and UniSA-Users-Outlook03CachedModeOn GPO

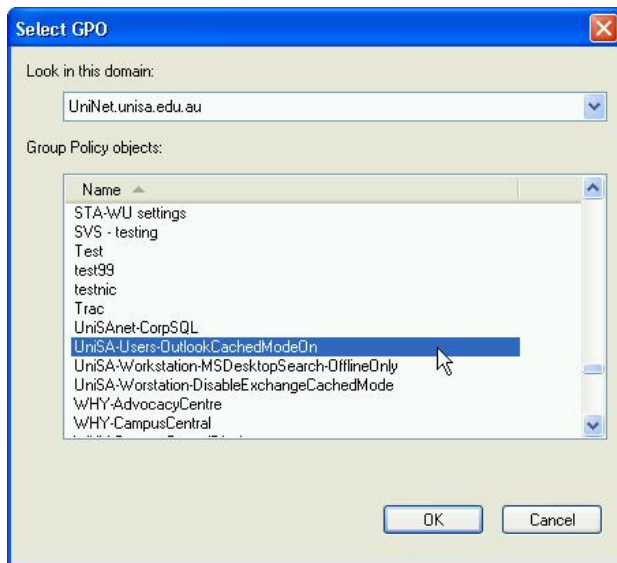
- Open the Group Policy Management MMC (make sure you open using the correct account with permissions in AD).
- Browse to the Users (Organisational Unit) OU that you manage and select the OU that you want to link the (Group Policy Object) GPO to.



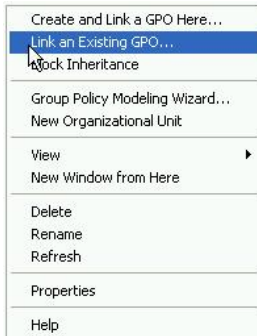
- Right click the OU and select “Link an Existing GPO”.



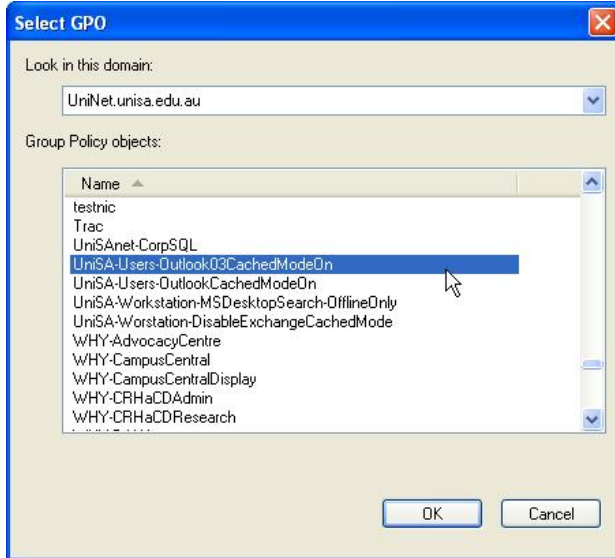
- Select the UniSA-Users-OutlookCachedModeOn GPO and click “OK”.



- Right click the OU and select “Link an Existing GPO”.



- Select the UniSA-Users-Outlook03CachedModeOn GPO and click “OK”.

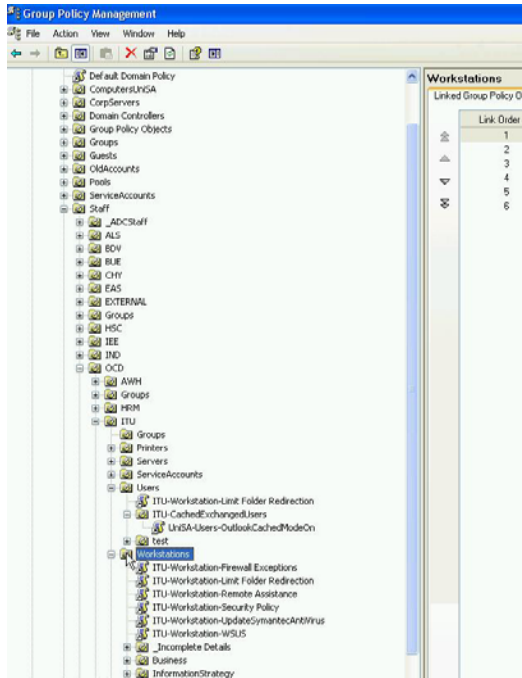


- Email [ITHelpdesk@unisa.edu.au](mailto:ITHelpdesk@unisa.edu.au) the details of which OU you have linked, please also include the GPO name.
- The GPO is now linked to the OU.

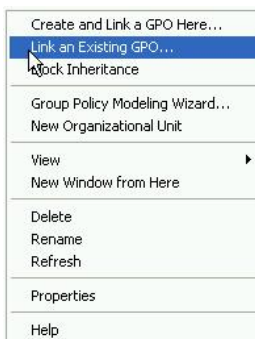
**If you manage multiple User OUs please do not link to all of those OUs at the same time. ISTS recommends linking the GPO to the users' ORG OU and sending an email to the ORG all staff group asking users to reboot their PC and logging in to Outlook within the next hour. We are trying to get as many users as possible into cache mode before Monday morning.**

## Linking the UniSA-Workstation-MSDesktopSearch-OfflineOnly GPO

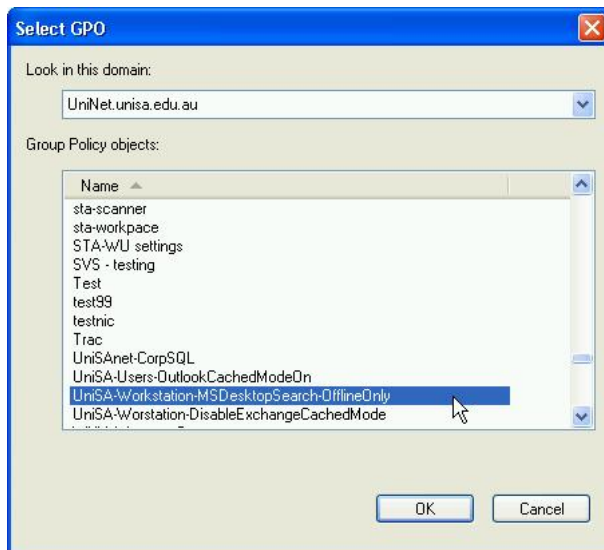
- Open the Group Policy Management MMC (make sure you open using the correct account with permissions needed in AD).
- Browse to the Workstation OU that you manage and select the OU that you want to link the GPO to.



- Right click the OU and select “Link an Existing GPO”.



- Select the UniSA-Workstation-MSDesktopSearch-OfflineOnly GPO and click “OK”



- Email [ITHelpdesk@unisa.edu.au](mailto:ITHelpdesk@unisa.edu.au) details of which OU you have linked, please also include the GPO name.
- The GPO is now linked to the OU.

### Linking the UniSA-Workstation-DisableExchangeCachedMode GPO

Please use the instructions for linking

Linking the UniSA-Workstation-MSDesktopSearch-OfflineOnly GPO except select the **UniSA-Workstation-DisableExchangeCachedMode** GPO. Please do not apply this to large groups of staff PCs.