

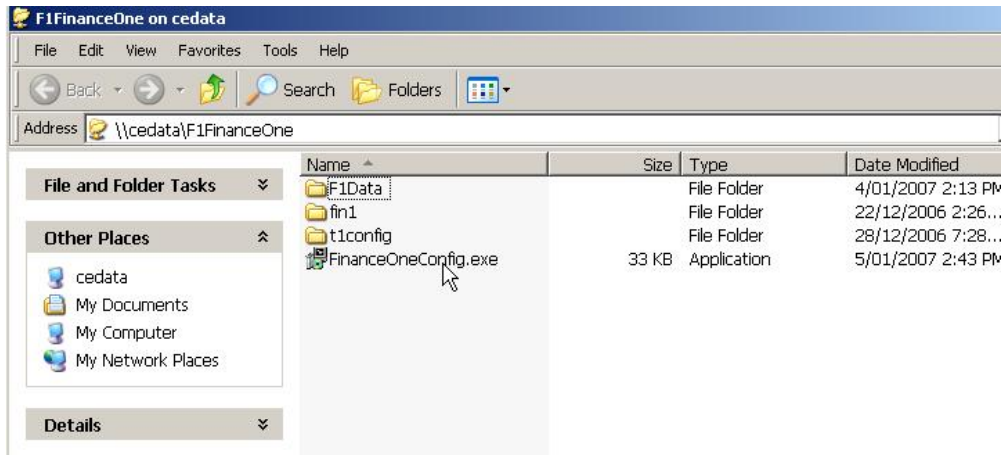
Finance One Re-Engineering Automated Configuration Manual All Finance One Users

The purpose of this document is to assist with the configuration of the new Finance One environments. This process has been simplified by the use of an 'automated configuration' program which needs to be run (once only) on every PC that currently uses Finance One and requires access to the new version of the application.

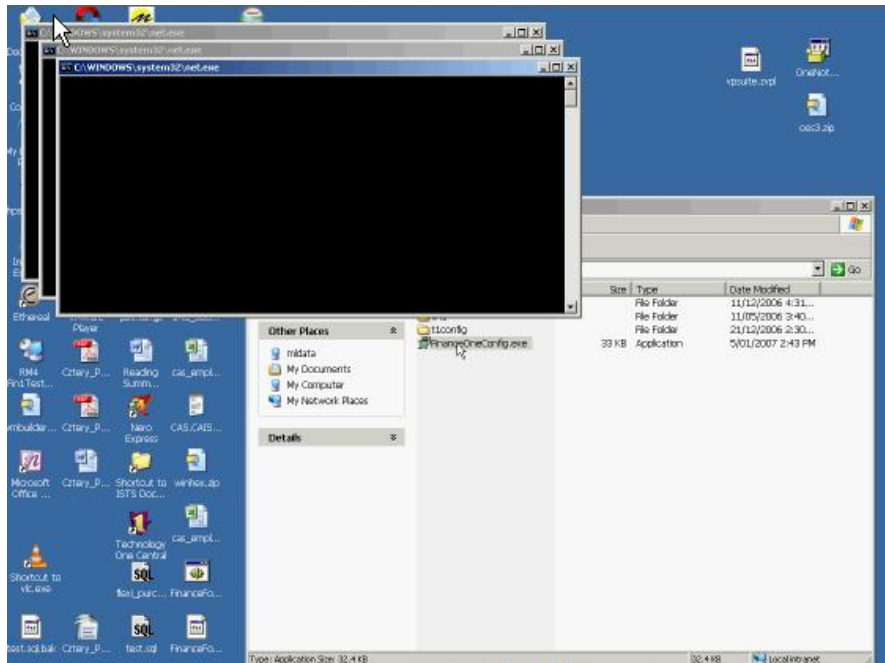
The steps to achieve this are as follows;

1. Follow the link below to open the folder containing the 'FinanceOneConfig.exe' executable and then double-click on it to start the process.
[Hint: you can also click on the link below while pressing CTRL key]

<\\cedata\F1FinanceOne>

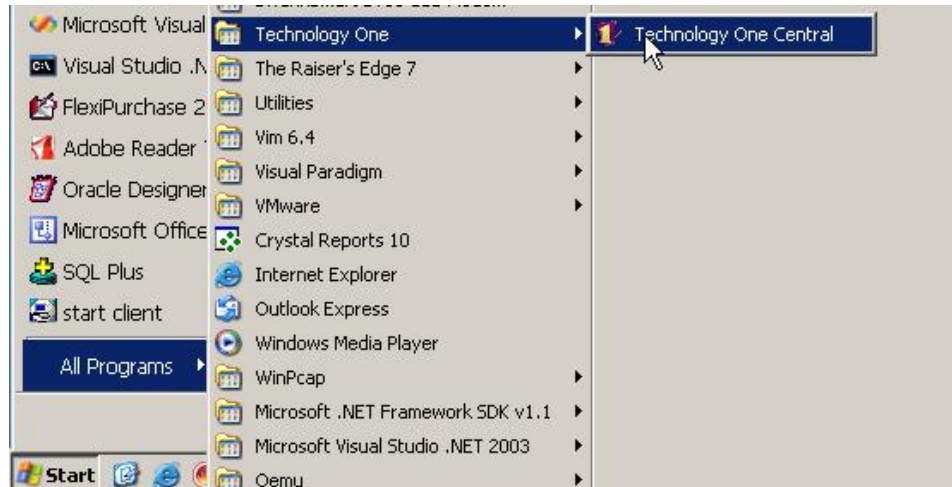


2. While the script is executing a few processing windows will popup and then disappear.
[This will re-map your v: and w: drives to the new and old Finance One report repositories respectively]

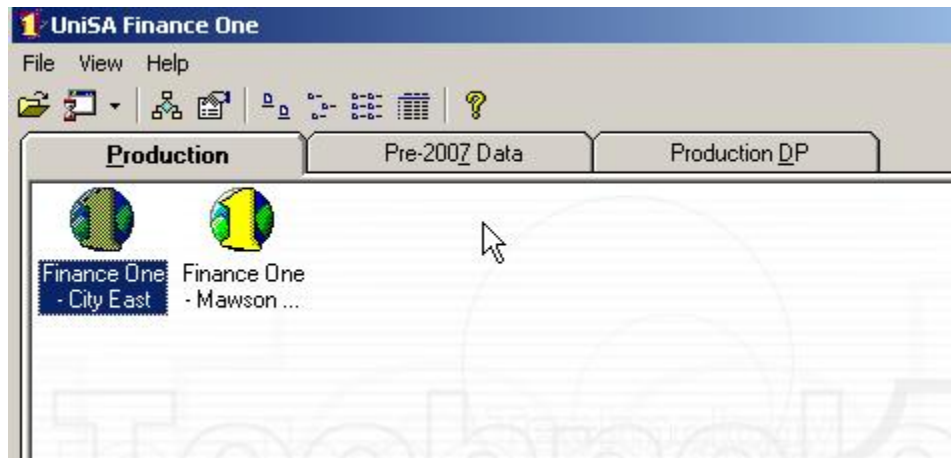


3. Once the windows disappear your new environment should be ready to use.
Note: If you have existing shortcuts to access Finance One on your desktop you will need to delete and re-create them as required.

If you do not already have a shortcut to 'Technology One Central' you should navigate to the appropriate location (via the start menu) and try to start up the application – it should look something like this.



4. The eventual result should look like this with (at least) two tabs one each for 'Production' (which is the 'new' version) and 'Pre-2007 Data' (which is the 'old' version).



Should the result look different or you have any difficulties please contact your local IT support staff to rectify this.