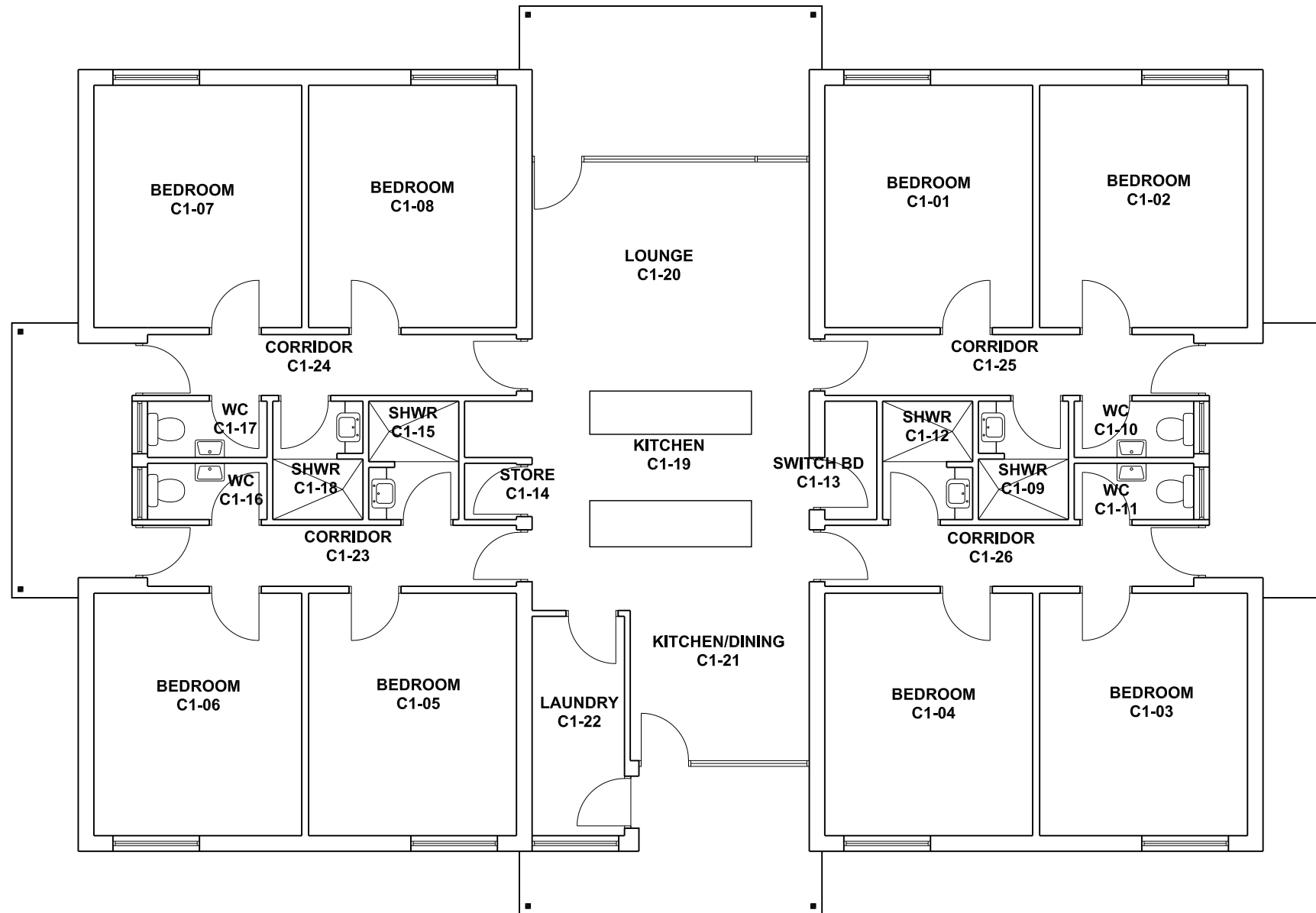


NOTES:
 Building Records drawings remain the property of the University of South Australia and must be returned upon request.
 These drawings may be inaccurate, and are subject to change without notice. Any errors and/or omissions should be reported to the Facilities Management Unit.



UNIVERSITY OF SOUTH AUSTRALIA

FACILITIES MANAGEMENT UNIT
 Level 2,
 101 Currie Street,
 Adelaide. SA 5000
 Phone 8302 2762
 Fax 8302 2708

**BUILDING RECORDS
 WHYALLA CAMPUS**

Building
**STUDENT UNIT C (Unit 3)
 LEVEL 01**

Scale: Refer to scale bar
 Drawn: J Hvalica
 Last Update: 21/06/2011

Drawing No.: **A613PL01 - W**
 Revision: **C**

