

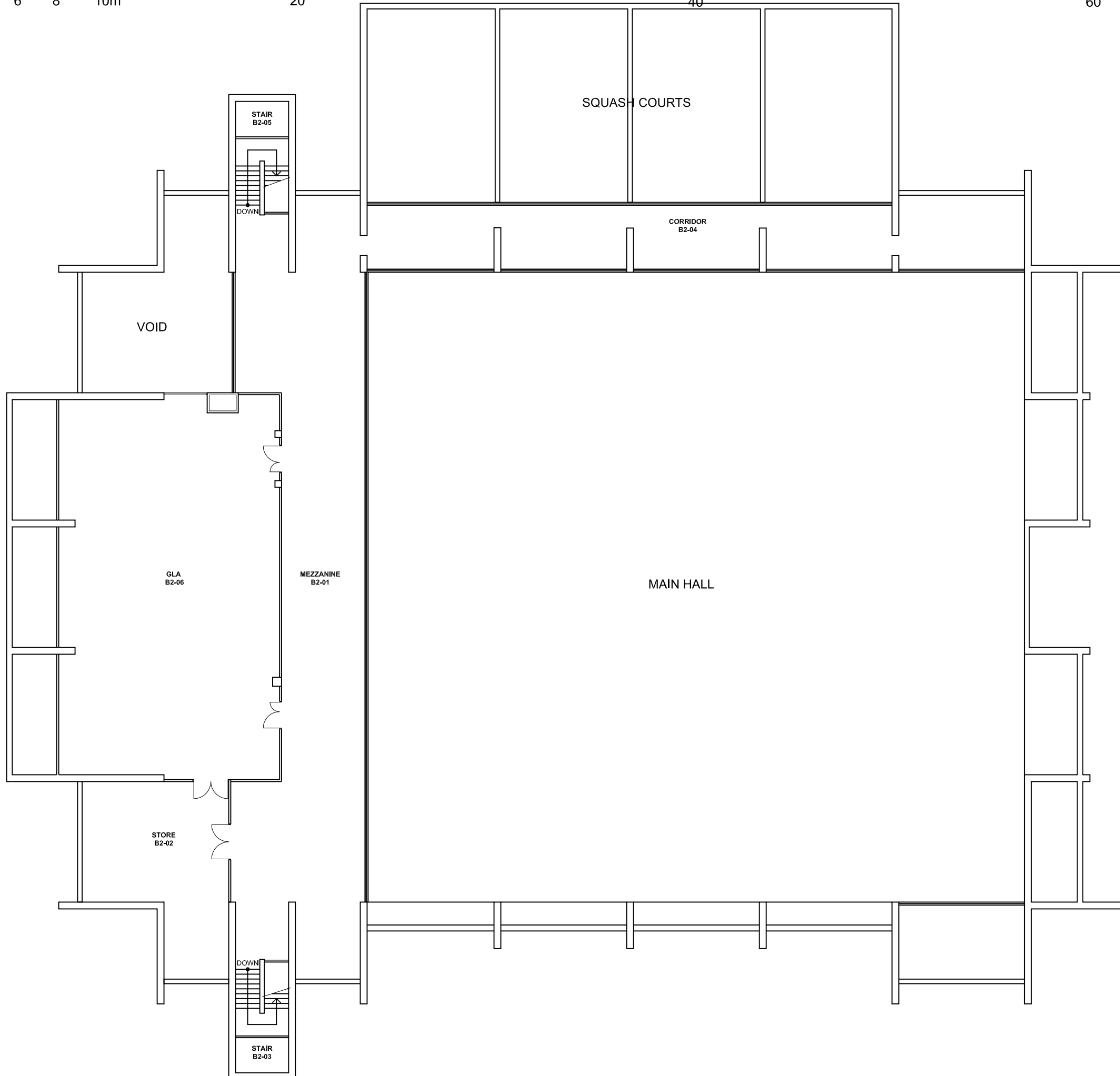
2 4 6 8 10m

20

40

60

NOTES:
 Building Records drawings remain the property of the University of South Australia and must be returned upon request.
 These drawings may be inaccurate, and are subject to change without notice. Any errors and/or omissions should be reported to the Facilities Management Unit.



**UNIVERSITY OF
SOUTH AUSTRALIA**

**FACILITIES
MANAGEMENT
UNIT** Level 2,
101 Currie Street,
Adelaide, SA 5000
Phone 8302 2762
Fax 8302 2708

**BUILDING RECORDS
MAWSON LAKES CAMPUS**

Building
**SPORTS CENTRE
BUILDING B
LEVEL 02**

Scale: Refer to scale bar Drawn: J Hvalica
Last Update: 08/11/2010

Drawing No.: **A502PL02 - W** Revision: **F**