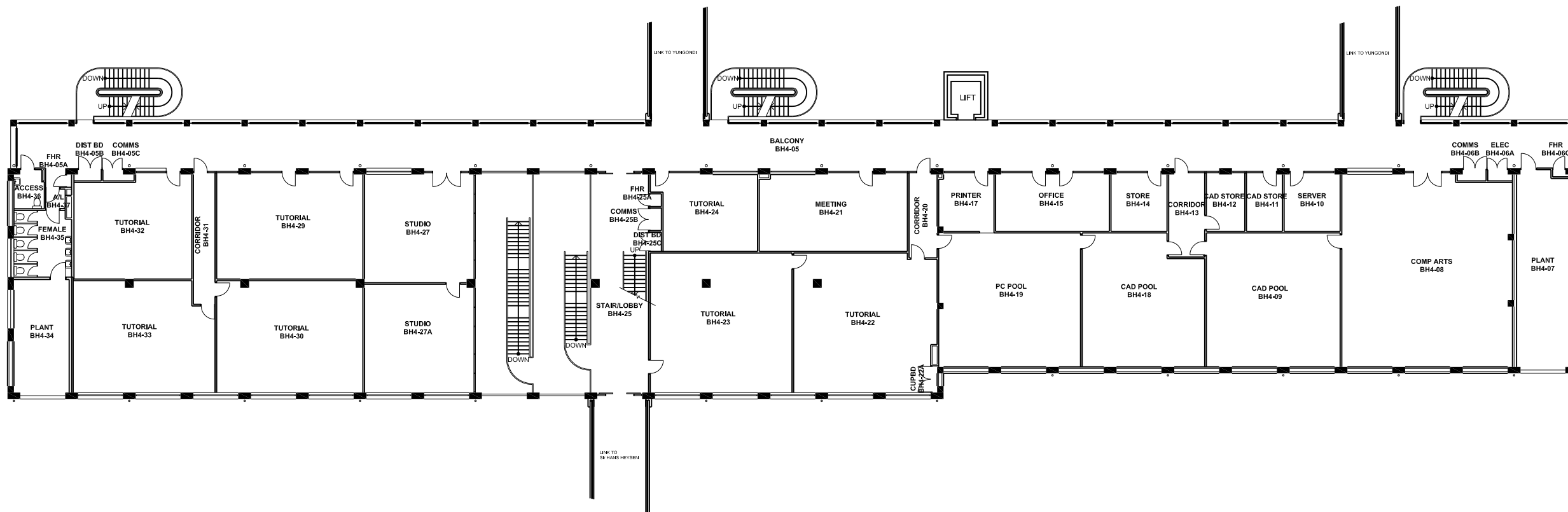


2 4 6 8 10m 20 30 40 50 60 80 100

NOTES:
 Building Records drawings remain the property of the University of South Australia and must be returned upon request.
 These drawings may be inaccurate, and are subject to change without notice. Any errors and/or omissions should be reported to the Facilities Management Unit.



UNIVERSITY OF
SOUTH AUSTRALIA

**FACILITIES
MANAGEMENT
UNIT** Level 2,
101 Currie Street,
Adelaide, SA 5000
Phone 8302 2762
Fax 8302 2708

**BUILDING RECORDS
CITY WEST CAMPUS**

Building
**BARBARA HANRAHAN
LEVEL 04**

Scale: Refer to scale bar Drawn: J Hvalica
Last Update: 10/07/2009

Drawing No.: **A704PL04 - W** Revision: **J**

