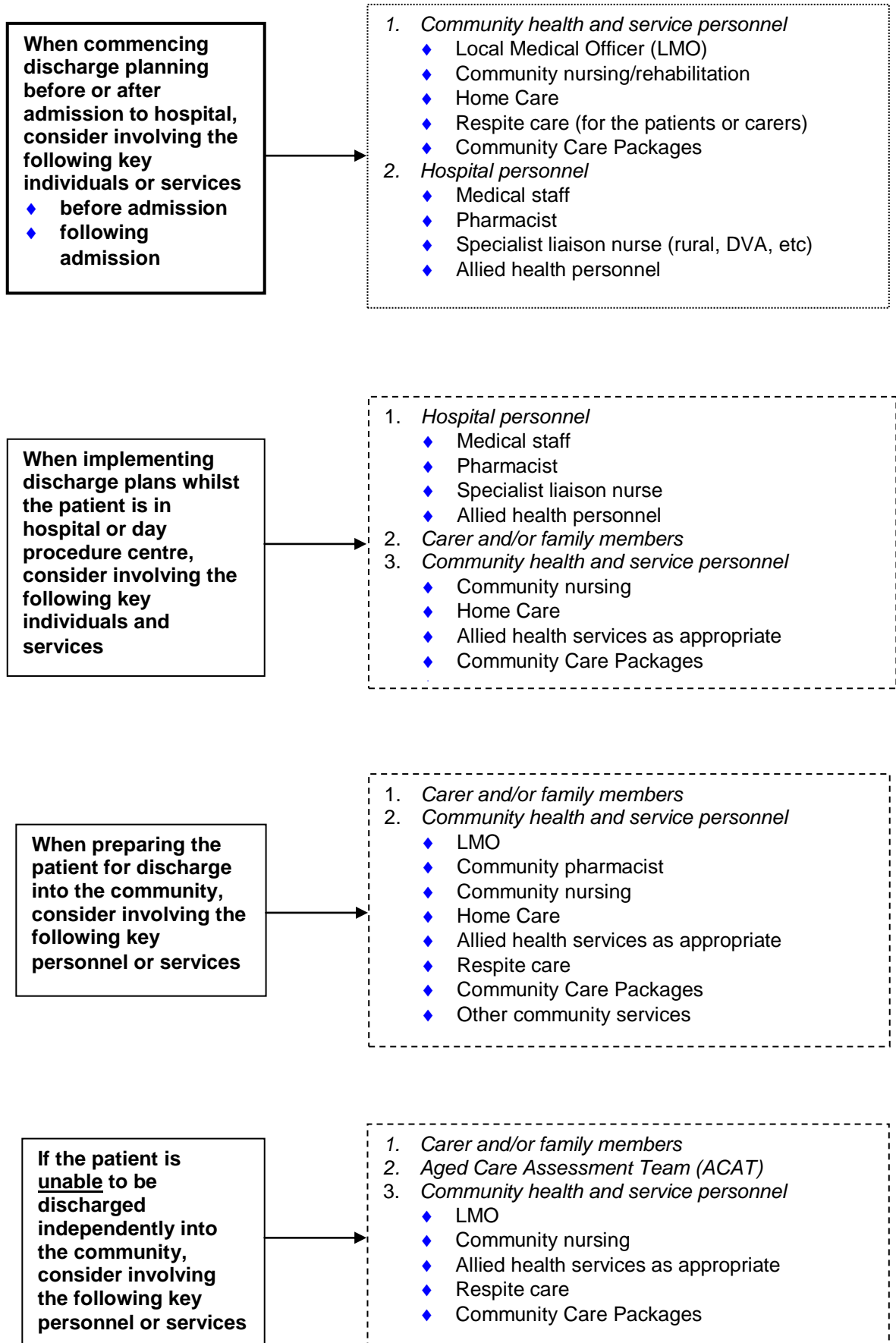


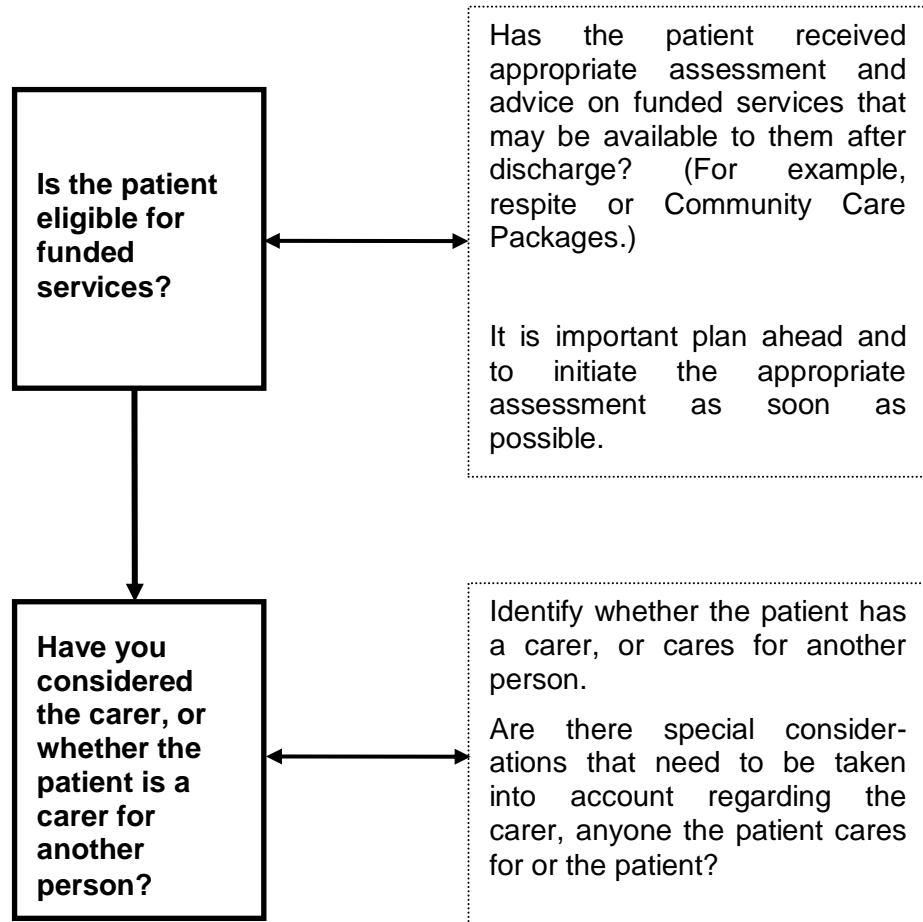


ICAHE Discharge Planning Flowchart

A useful tool for healthcare providers in discharge planning processes



Before admission to day procedure unit or before, or on, admission to hospital



CONTACTS

www.unisa.edu.au/cahe
iCAHE@unisa.edu.au
Telephone: +61 8 830 22072
Fax: +61 8 830 22853

University of South Australia
GPO Box 2471
Adelaide SA 5001
Australia

CRICOS Provider number
00121B

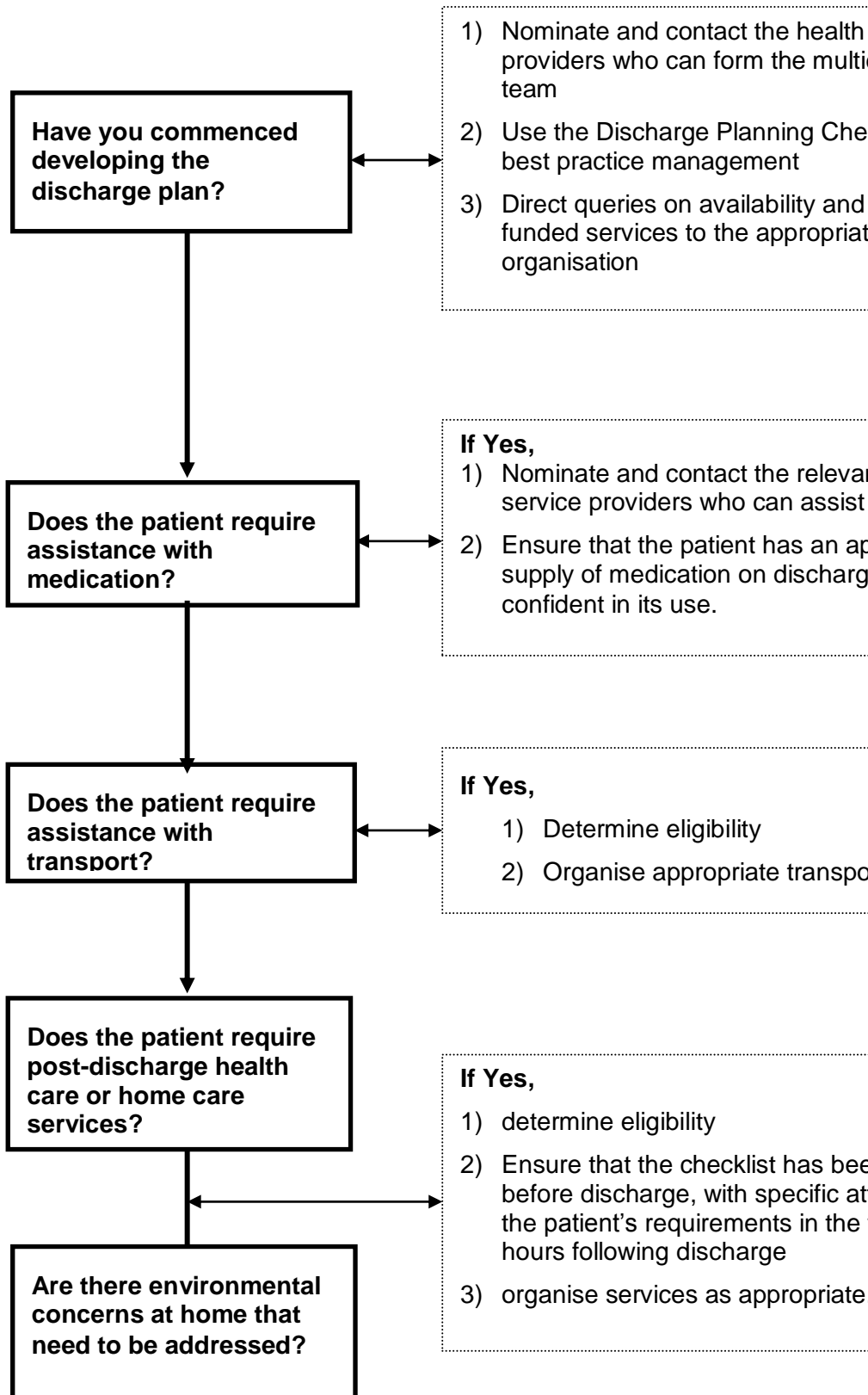


University of
South Australia

International Centre for
Allied Health Evidence

iCAHE

Within one day of admission to hospital.



CONTACTS

www.unisa.edu.au/cahe
 iCAHE@unisa.edu.au
 Telephone: +61 8 830 22072
 Fax: +61 8 830 22853

University of South Australia
 GPO Box 2471
 Adelaide SA 5001
 Australia

CRICOS Provider number
 00121B



University of South Australia

International Centre for Allied Health Evidence

iCAHE

On the day of discharge

Have you organised a discharge summary, including medication advice for the LMO?

Ensure that an informative discharge summary, including medication plan, is provided to the relevant LMO. A MediList profile should be provided to the community pharmacist on, or before, the day of discharge. Ensure that appropriate concerns have been addressed.

Have you provided appropriate advice to patient and carer?

The MediList to be provided to the patient and advice to the community pharmacist. Ensure that appropriate information is provided to patient and carer regarding community supports, support group and help matters.

Post-discharge monitoring

Have you considered monitoring your performance in planning patient discharge?

- 1) Consider using performance monitoring to monitor the quality of discharge processes
- 2) Consider obtaining feedback on the quality of discharge planning and outcomes from community consumers' perspectives.

CONTACTS

www.unisa.edu.au/cahe
iCAHE@unisa.edu.au
Telephone: +61 8 830 22072
Fax: +61 8 830 22853

University of South Australia
GPO Box 2471
Adelaide SA 5001
Australia

CRICOS Provider number
00121B



University of
South Australia

International Centre for
Allied Health Evidence

iCAHE